











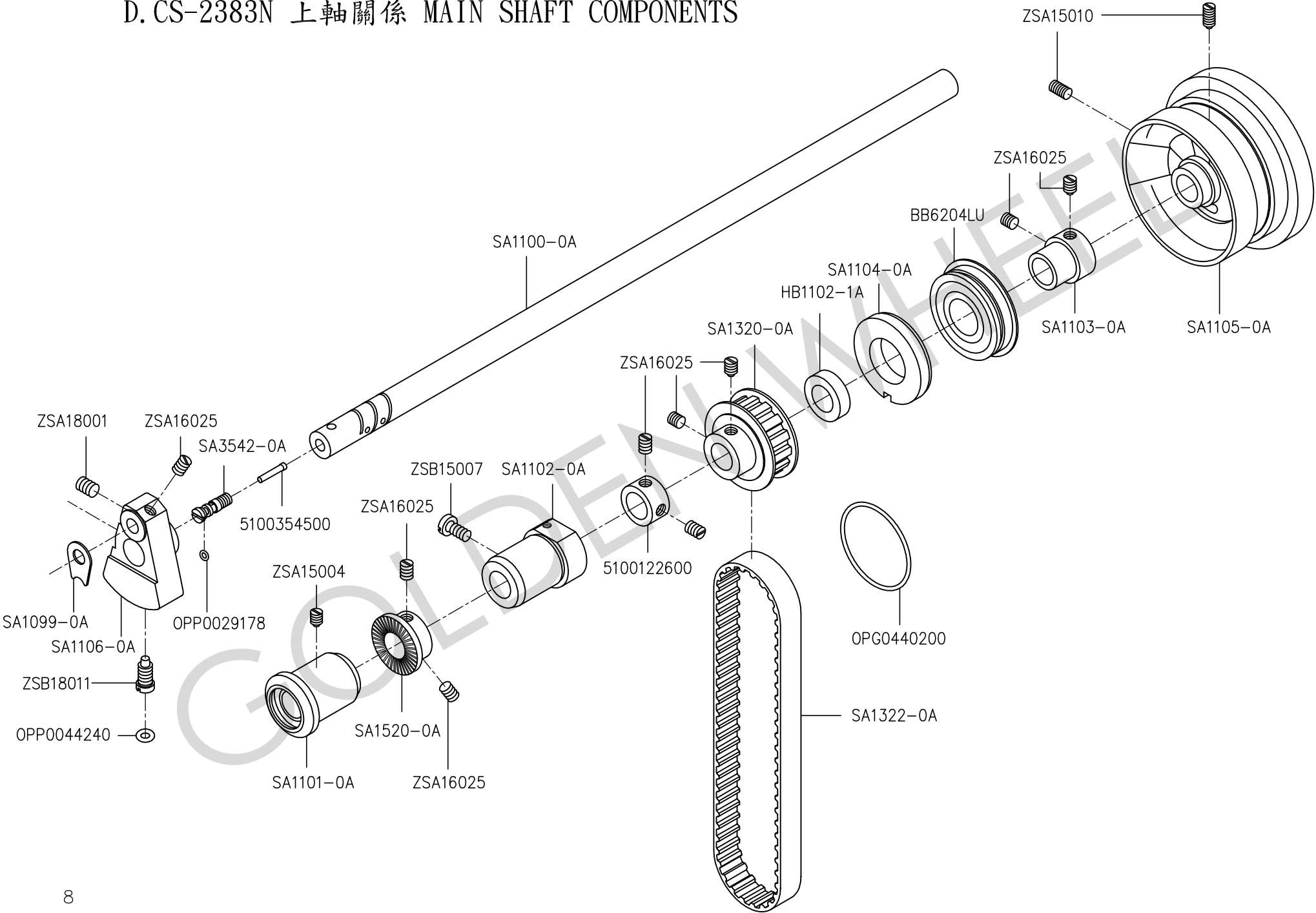




C、CS-2383N 系調子關係 THREAD TENSION RELEASE COMPONENTS

零件號碼 Part No	零件名稱	Name of Part	件數 Q, TY	備註 Remarks
4710320400	捲線切刀	THREAD CUTTER	1	
51003155T0	塑料螺母	THREAD TENSION NUT	(2)	
51003157T0	壓線盤	BOBBIN WINDER TENSION DISC	(4)	
A1042-0A	墊片	ROTATING STOPPER	(1)	
HB1028-0A	螺絲	SCREW (9/64-40)	(1)	
SA1020-0A	縫線壓力調整	THREAD TENSION ASM.	1	
SA1020-1A	縫線壓力調整	PRE-TENSION CONTROLLER ASM.	1	
SA1020-2A	沙拉組	BOBBIN THREAD TENSION ASM.	1	
SA1021-0A	調整彈簧	TENSION SPRING	(1)	
SA1021-2A	壓縮彈簧	THREAD TENSION SPRING	(2)	
SA1022-0A	壓盤	TENSION DISC HOLDER	(1)	
SA1024-0A	墊片	SPACER	1	
SA1025-0A	壓線盤	THREAD TENSION DISK COMPLY.	(1)	
SA1026-0A	調整螺絲棒	THREAD TENSION POST ASM.	(1)	
SA1027-0A	吊線彈簧	TAKE-UP SPRING	(1)	
SA1028-0A	鬆線銷	PIN	(1)	
SA1029-0A	彈簧座	THREAD TENSION ROD ASM.	(1)	
SA1030-0A	套環	TENSION RELEASE PIN ASM.	(1)	
SA1031-0A	墊片	SPACER	1	
SA1037-1A	螺栓組	THREAD TENSION ASM.	1	
SA1037-2A	螺栓組	BOBBIN THREAD TENSION ROD ASM.	(1)	
SA1043-0A	鬆線桿	THREAD RELEASE	1	
SA1050-0A	線引導銷	THREAD GUIDE PIN	1	
SA1054-0A	線掛	THREAD GUIDE	1	
XB118002	墊圈	FELT	(2)	
ZSA11002	螺絲	SCREW (11/64-40x6.5)	1	
ZSB09029	螺絲	SCREW (9/64-40x6)	2	
ZSB11032	螺絲	SCREW (11/64-40x7.8)	1	
ZSL11007	螺帽	NUT (11/64-40)	(2)	
ZSN16001	螺帽	NUT (1/4-40)	(1)	

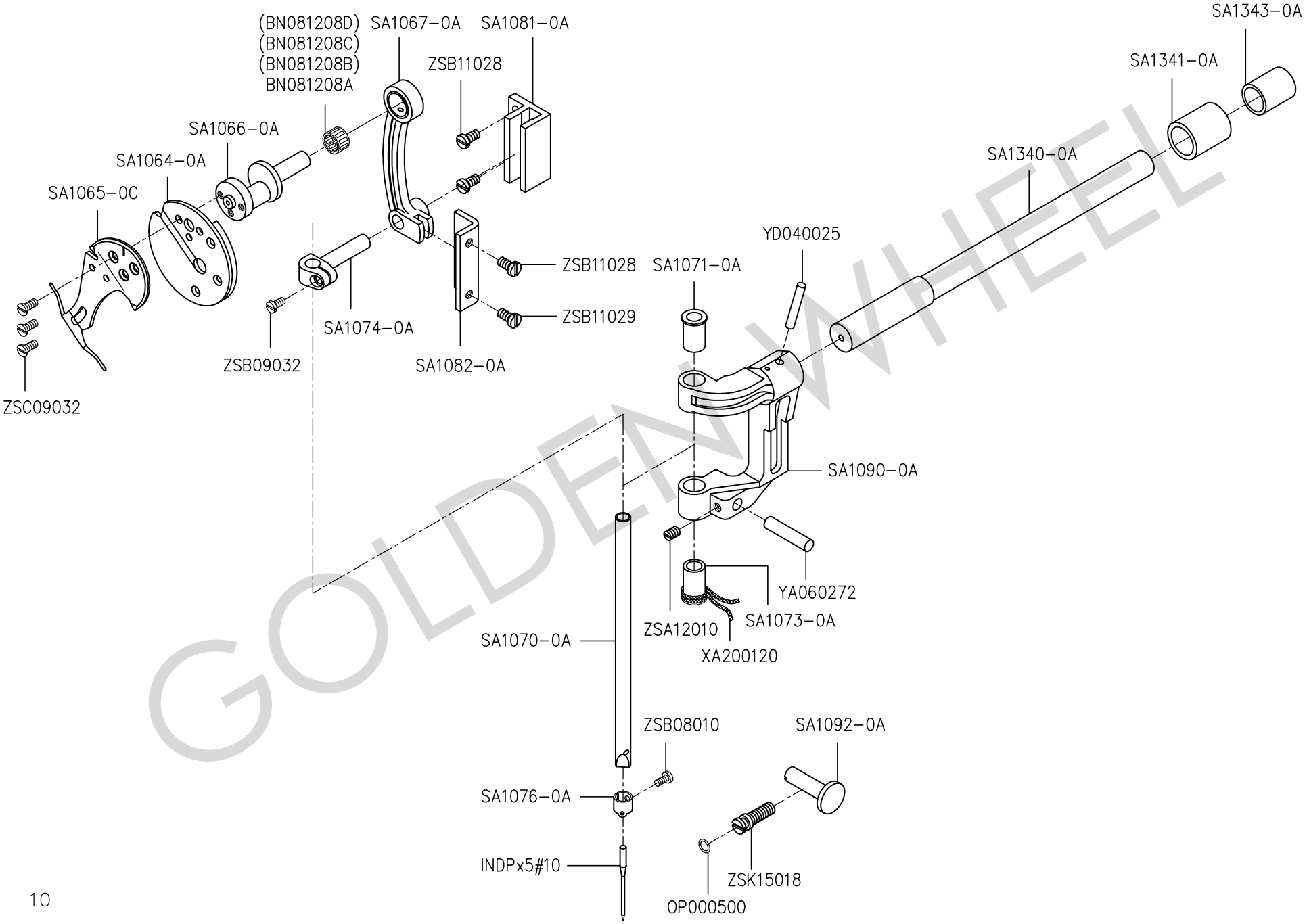
# D. CS-2383N 上軸關係 MAIN SHAFT COMPONENTS



D、CS-2383N 上軸關係 MAIN SHAFT COMPONENTS

零件號碼 Part No	零件名稱	Name of Part	件數 Q, TY	備註 Remarks
5100122600	定環	THRUST COLLAR	1	
5100354500	油線	OIL WICK	1	
BB6204LU	軸承	BEARING	(1)	
HB1102-1A	油封	OIL SEAL	1	
OPG0440200	O形環	RUBBER RING	1	
OPP0029178	O形環	RUBBER RING	1	
OPP0044240	O形環	RUBBER RING	1	
SA1099-0A	墊片	COUNTERWEIGHT PROTECTING PLATE	1	
SA1100-0A	上軸	MAIN SHAFT	1	
SA1101-0A	上軸套管組	MAIN SHAFT BUSHING ASM., FRONT	1	
SA1102-0A	上軸中套管	MAIN SHAFT BUSHING, INTERMEDIA	1	
SA1103-0A	軸承套管	THRUST COLLAR	(1)	
SA1104-0A	油封環	OIL SEAL COLLAR	1	
SA1105-0A	皮帶輪	HAND WHEEL	1	
SA1106-0A	曲柄配重塊	COUNTERWEIGHT	1	
SA1320-0A	齒形皮帶輪組	SPROCKET ASM.	1	
SA1322-0A	齒形皮帶	TIMING BELT	1	
SA1520-0A	捲線驅動輪	DRIVING WHEEL	1	
SA3542-0A	油量調節螺絲	PIN	1	
ZSA15004	螺絲	SCREW (15/64-28x10.5)	1	
ZSA15010	螺絲	SCREW (15/64-28x15)	2	
ZSA16025	螺絲	SCREW (1/4-40x6)	10	
ZSA18001	螺絲	SCREW (9/32-28x8)	1	
ZSB15007	螺絲	SCREW (15/64-28x12)	1	
ZSB18011	螺絲	SCREW (9/32-28x16)	1	

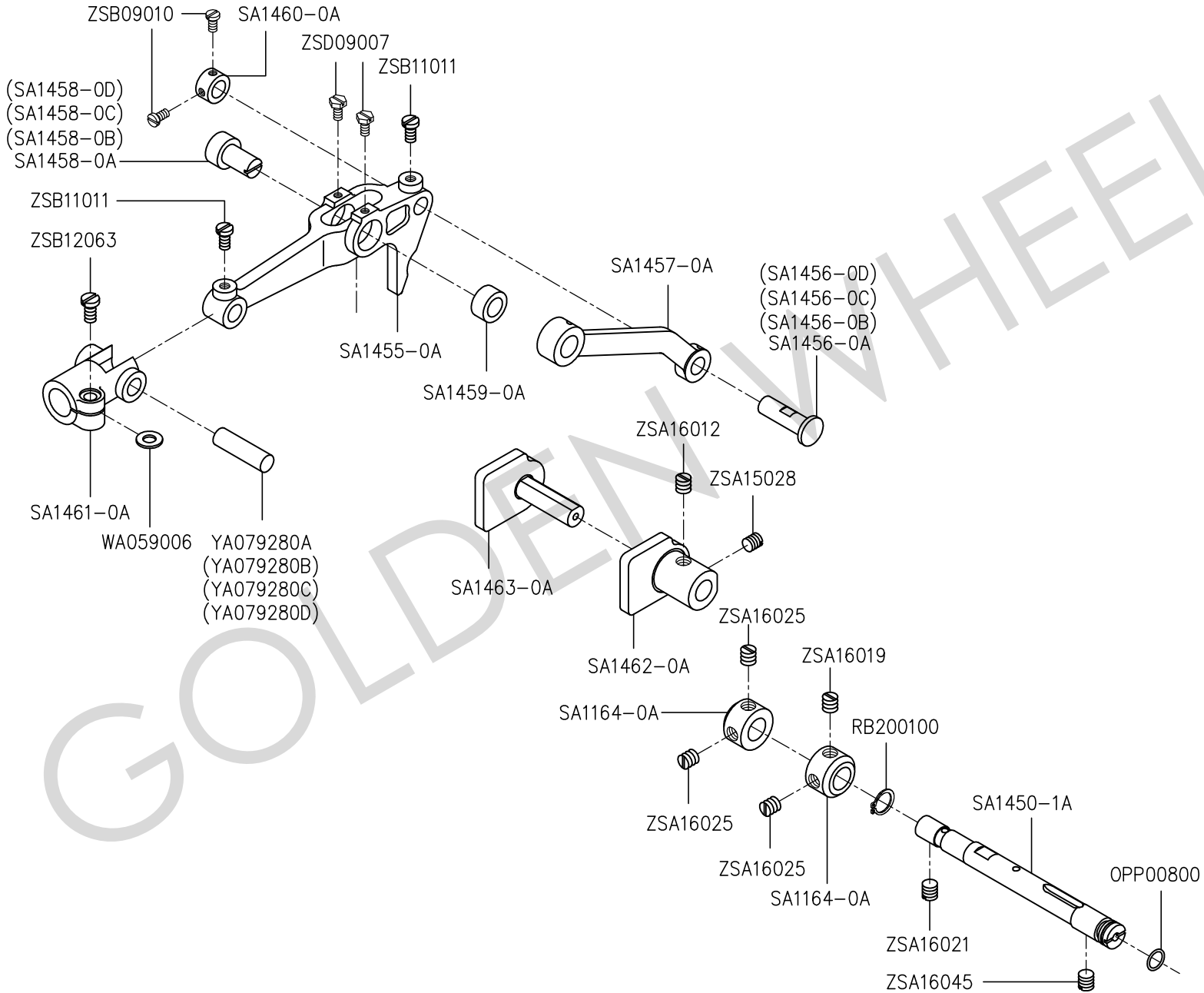
# E. CS-2383N 針棒關係 NEEDLE BAR COMPONENTS



E、CS-2383N 針棒關係 NEEDLE BAR COMPONENTS

零件號碼 Part No	零件名稱 Name of Part	件數 Q, TY	零件號碼 Part No	零件名稱 Name of Part	件數 Q, TY	備註 Remarks
BN081208A	滾針軸承 ---- NEEDLE BEARING -----	1	XA200120	油線 ----- OIL WICK -----	1	
BN081208B	滾針軸承 ---- NEEDLE BEARING -----	(1)	YA060272	引導銷 ---- GUIDE PIN -----	1	
BN081208C	滾針軸承 ---- NEEDLE BEARING -----	(1)	YD040025	彈簧銷 ---- SPRING PIN -----	(1)	
BN081208D	滾針軸承 ---- NEEDLE BEARING -----	(1)	ZSA12010	螺絲 ----- SCREW (3/16-28x7) -----	1	
INDPx5#10	針 ----- NEEDLE -----	1	ZSB08010	螺絲 ----- SCREW (1/8-44x4.6) -----	1	
OP000500	O形環 ----- RUBBER RING -----	1	ZSB09032	螺絲 ----- SCREW (9/64-40x8.5) -----	1	
SA1064-0A	調速墊組 ---- TAKE-UP COUNTERWEIGHT ASM. ----	1	ZSB11028	螺絲 ----- SCREW (11/64-40x10) -----	3	
SA1065-0C	平衡指示針 -- BALANCE V -----	1	ZSB11029	螺絲 ----- SCREW (11/64-40x7) -----	2	
SA1066-0A	曲軸組 ----- NEEDLE BAR CRANK ASM. -----	1	ZSC09032	螺絲 ----- SCREW (9/64-40x8.6) -----	3	
SA1067-0A	曲軸支架組 -- NEEDLE BAR CRANK ROD ASM. -----	1	ZSK15018	螺絲 ----- SCREW (15/64-28) -----	1	
SA1070-0A	針棒 ----- NEEDLE ROD -----	1				
SA1071-0A	針棒套管上 -- NEEDLE BAR BUSHING, UPPER -----	(1)				
SA1073-0A	針棒套管下 -- NEEDLE BAR BUSHING, LOWER -----	(1)				
SA1074-0A	針棒鉗 ----- NEEDLE BAR CONNECTION -----	1				
SA1076-0A	針棒線掛 ---- NEEDLE ROD THREAD RACK -----	1				
SA1081-0A	拉基導槽 ---- NEEDLE BAR CONNECTION GUIDE -----	1				
SA1082-0A	定位板 ----- CRANK ROD GUIDE -----	1				
SA1090-0A	針柱座 ----- NEEDLE BAR YOKE -----	(1)				
SA1092-0A	銷釘 ----- NEEDLE BAR YOKE PRESSER -----	1				
SA1340-0A	針柱座軸 ---- SHAFT -----	(1)				
SA1341-0A	軸襯套(前) -- FEED ROCKER SHAFT BUSHING -----	1				
SA1343-0A	軸襯套(後) -- SHAFT BUSHING, REAR -----	1				

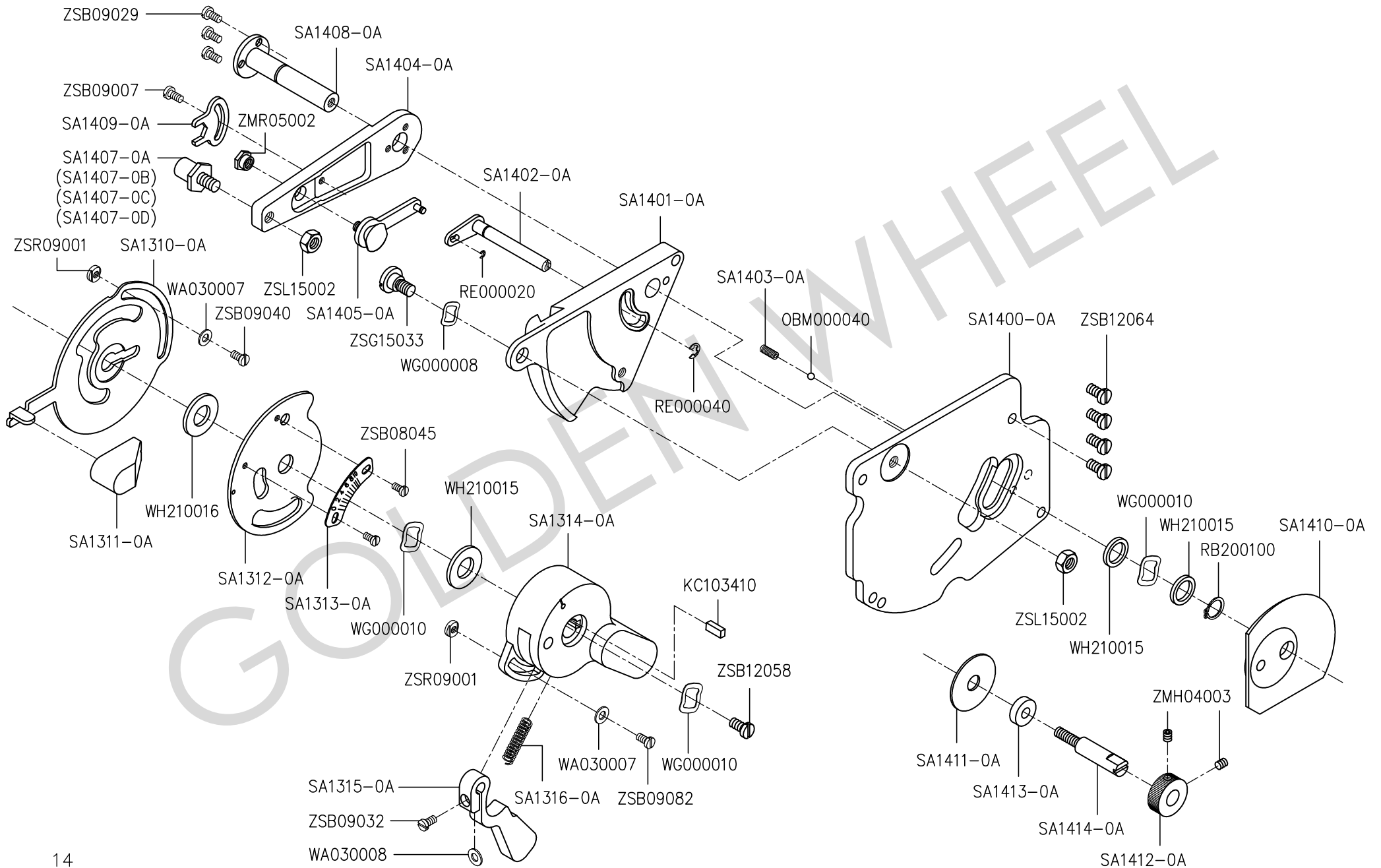
# F. CS-2383N 針振調節關係(一) NEEDLE VIBRATOR & ADJUSTMENT COMPONENTS(1)



F、CS-2383N 針振調節關係關係(一) NEEDLE VIBRATOR & ADJUSTMENT COMPONENTS(1)

零件號碼 Part No	零件名稱 Name of Part	件數 Q, TY	零件號碼 Part No	零件名稱 Name of Part	件數 Q, TY	備註 Remarks
OPP00800	O形環 ----- RUBBER RING -----	1	WA059006	墊圈 ----- WASHER -----	(1)	
RB200100	扣環 ----- SNAP RING -----	1	YA079280A	銷 A ----- PIN A -----	(1)	
SA1164-0A	定環 ----- THRUST COLLAR -----	2	YA079280B	銷 B ----- PIN B -----	(1)	
SA1450-1A	軸 ----- NEEDLE VIBRATING CAM SHAFT -----	1	YA079280C	銷 C ----- PIN C -----	(1)	
SA1455-0A	控制連桿 ---- DRIVE LINK -----	(1)	YA079280D	銷 D ----- PIN D -----	(1)	
SA1456-0A	連桿 ----- LINK -----	(1)	ZSA15028	螺絲 ----- SCREW (15/64-28x7) -----	1	
SA1456-0B	軸 ----- SHAFT -----	(1)	ZSA16012	螺絲 ----- SCREW (1/4-40x4) -----	1	
SA1456-0C	軸 ----- SHAFT -----	(1)	ZSA16019	螺絲 ----- SCREW (1/4-40x7) -----	1	
SA1456-0D	軸 ----- SHAFT -----	(1)	ZSA16021	螺絲 ----- SCREW (1/4-40x5) -----	1	
SA1457-0A	連接臂 ----- LINK -----	(1)	ZSA16025	螺絲 ----- SCREW (1/4-40x6) -----	3	
SA1458-0A	銷 A ----- PIN A -----	1	ZSA16045	螺絲 ----- SCREW (1/4-40x5.5) -----	2	
SA1458-0B	銷 B ----- PIN B -----	1	ZSB09010	螺絲 ----- SCREW (9/64-40x4.5) -----	2	
SA1458-0C	銷 C ----- PIN C -----	1	ZSB11011	螺絲 ----- SCREW (11/64-40x9) -----	(2)	
SA1458-0D	銷 D ----- PIN D -----	1	ZSB12063	螺絲 ----- SCREW (3/16-28x14) -----	(1)	
SA1459-0A	套環 ----- BUSHING -----	1	ZSD09007	螺絲 ----- SCREW (9/64-40x5.5) -----	(2)	
SA1460-0A	定環 ----- THRUST COLLAR -----	(1)				
SA1461-0A	軸連接器 ---- SHAFT CONNECTION -----	(1)				
SA1462-0A	連桿定規 A -- DRIVE LINK GUIDE A -----	1				
SA1463-0A	連桿定規 B -- DRIVE LINK GUIDE B -----	1				

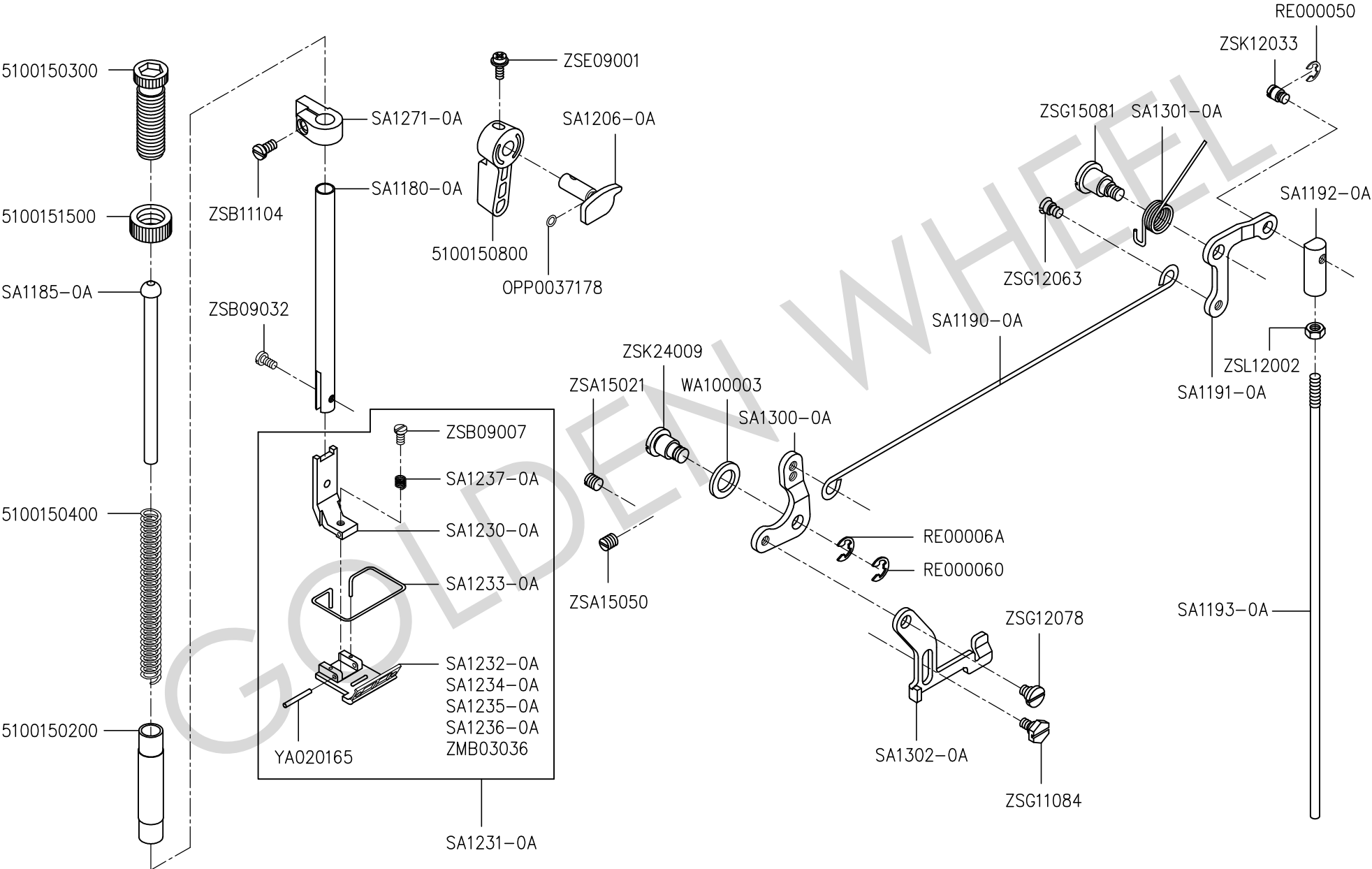
# G. CS-2383N 針振調節關係(二) NEEDLE VIBRATOR & ADJUSTMENT COMPONENTS(2)



G、CS-2383N 針振調節關係關係(二) NEEDLE VIBRATOR & ADJUSTMENT COMPONENTS(2)

零件號碼 Part No	零件名稱 Name of Part	件數 Q, TY	零件號碼 Part No	零件名稱 Name of Part	件數 Q, TY	備註 Remarks
KC103410	鍵 ----- KEY -----	1	WA030007	墊圈 ----- WASHER -----	(4)	
OBM000040	鋼珠 ----- HAND STOP CRANK SHAFT BALL -----	(1)	WA030008	墊圈 ----- WASHER -----	1	
RB200100	扣環 ----- SNAP RING -----	(1)	WG000008	墊圈 ----- WAVED WASHER -----	(3)	
RE000020	E扣環 ----- E-RING -----	(1)	WG000010	墊圈 ----- WAVED WASHER -----	3	
RE000040	E扣環 ----- E-RING -----	(1)	WH210015	墊圈 ----- WASHER -----	3	
SA1310-0A	控制桿 ----- LEVER -----	(1)	WH210016	墊圈 ----- WASHER -----	1	
SA1311-0A	調節把手 ----- KNOB -----	(1)	ZMH04003	螺絲 ----- SCREW (M4-0.7x5) -----	2	
SA1312-0A	分度盤基盤銷 ----- SCALE MOUNTING BASE COMPLY. -----	(1)	ZMR05002	螺帽 ----- SCREW (M5-0.8) -----	(1)	
SA1313-0A	刻度盤 ----- SCALE PLATE -----	(1)	ZSB08045	螺絲 ----- SCREW (1/8-44x2.5) -----	(2)	
SA1314-0A	縫目調節器 ----- KNOB -----	(1)	ZSB09007	螺絲 ----- SCREW (9/64-40x7.5) -----	(1)	
SA1315-0A	控制桿 ----- LEVER -----	1	ZSB09029	螺絲 ----- SCREW (9/64-40x6) -----	(3)	
SA1316-0A	壓縮彈簧 ----- SPRING -----	1	ZSB09032	螺絲 ----- SCREW (9/64-40x8.5) -----	1	
SA1400-0A	上托板 ----- BASE MOUNTING PALATE -----	(1)	ZSB09040	螺絲 ----- SCREW (9/64-40x3.5) -----	(2)	
SA1401-0A	針棒搖桿座 ----- NEEDLE POSITION ADJUSTING BASE -----	(1)	ZSB09082	螺絲 ----- SCREW (9/64-40x6) -----	(2)	
SA1402-0A	控制桿搖臂 ----- LEVER ASM. -----	(1)	ZSB12058	螺絲 ----- SCREW (3/16-32x6.5) -----	1	
SA1403-0A	彈簧 ----- SPRING -----	(1)	ZSB12064	螺絲 ----- SCREW (3/16-28x10) -----	4	
SA1404-0A	搖桿 ----- ARM -----	(1)	ZSG15033	螺絲 ----- SCREW (15/64-28x8.5) -----	(1)	
SA1405-0A	制動塊(組) ----- STOPPER ASM. -----	(1)	ZSL15002	螺帽 ----- NUT (15/64-28) -----	(2)	
SA1407-0A	軸 ----- SHAFT -----	(1)	ZSR09001	螺帽 ----- NUT (9/64-40) -----	(4)	
SA1407-0B	軸 ----- SHAFT -----	(1)				
SA1407-0C	軸 ----- SHAFT -----	(1)				
SA1407-0D	軸 ----- SHAFT -----	(1)				
SA1408-0A	針棒搖桿支軸 ----- SHAFT -----	(1)				
SA1409-0A	螺母制動板 ----- NUT STOPPER -----	(1)				
SA1410-0A	油蓋 ----- OIL SHIELD -----	(1)				
SA1411-0A	墊片 ----- SPACER -----	1				
SA1412-0A	調整片 ----- ADJUSTING COLLAR -----	1				
SA1413-0A	墊片 ----- SPACER -----	1				
SA1414-0A	調整螺桿 ----- ADJUSTING SCREW -----	1				

# H. CS-2383N 押腳、送料關係 PRESSER BAR & REGULATOR COMPONENTS



## H、CS-2383N 押棒、送料關係 PRESSER BAR & FEED REGULATOR COMPONENTS

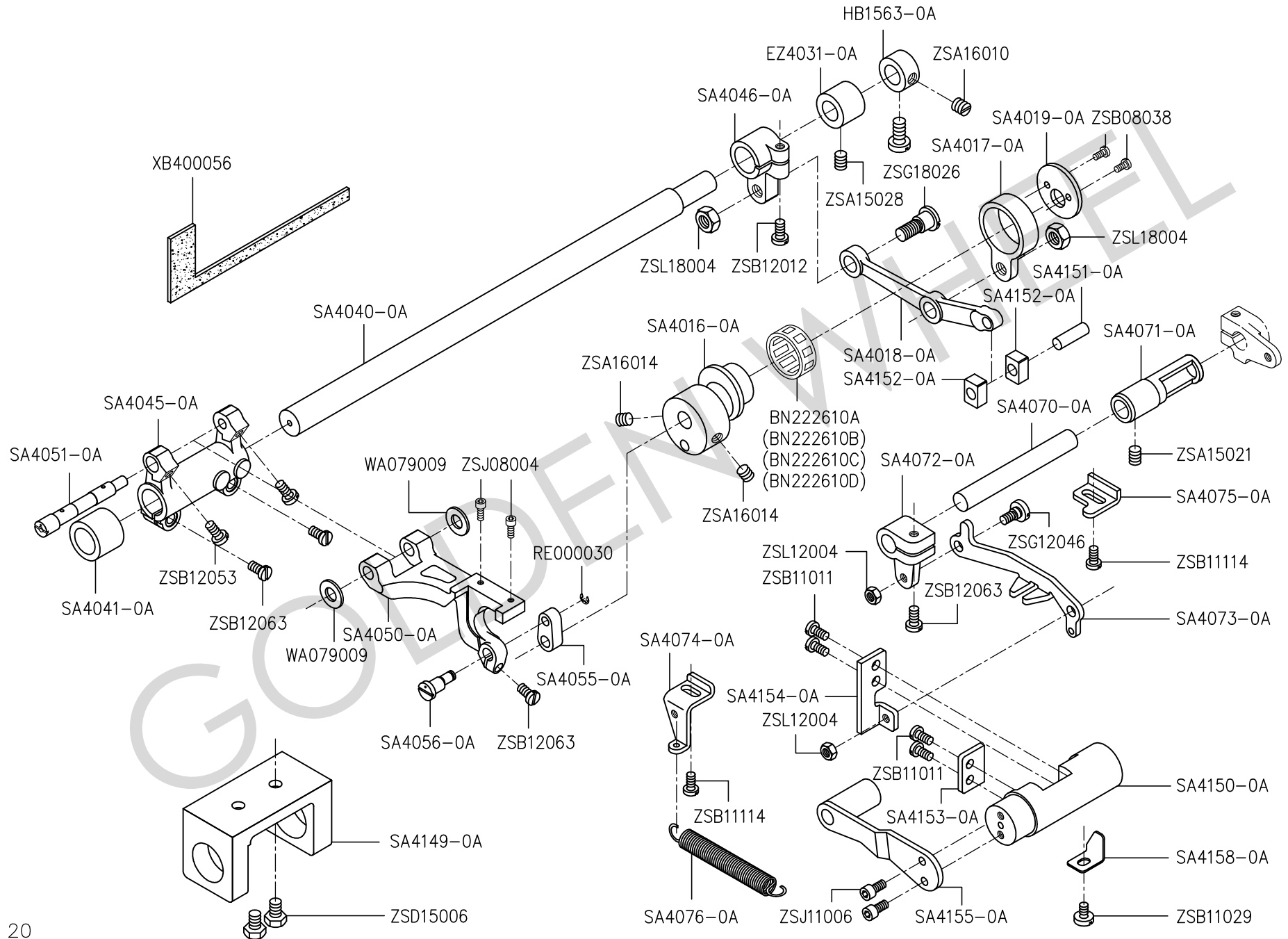
零件號碼 Part No	零件名稱 Name of Part	件數 Q, TY	零件號碼 Part No	零件名稱 Name of Part	件數 Q, TY	備註 Remarks
5100150200	押棒套管下	1	WA100003	防油墊片	1	
5100150300	壓緊螺拴	1	YA020165	銷	(1)	
5100150400	彈簧	1	ZMB03036	螺絲	2	
5100150800	壓棒提桿	1	ZSA15021	螺絲	1	
5100151500	螺帽	1	ZSA15050	螺絲	1	
OPP0037178	橡膠塞	1	ZSB09007	螺絲	(1)	
RE000050	E扣環	1	ZSB09032	螺絲	1	
RE000060	E扣環	1	ZSB11104	螺絲	1	
RE00006A	E扣環	1	ZSE09001	螺絲	1	
SA1180-0A	壓桿	1	ZSG11084	螺絲	1	
SA1185-0A	壓桿銷	1	ZSG12063	螺絲	2	
SA1190-0A	押棒拉桿	1	ZSG12078	螺絲	1	
SA1191-0A	腳弓連桿	1	ZSG15081	螺絲	1	
SA1192-0A	轉環	1	ZSK12033	螺絲	1	
SA1193-0A	連接桿	1	ZSK24009	螺絲	1	
SA1206-0A	提桿凸輪軸	1	ZSL12002	螺帽	1	
SA1230-0A	押腳(上)	(1)				
SA1231-0A	壓腳組	1				
SA1232-0A	押腳(下)	(1)				
SA1233-0A	護手環	(1)				
SA1234-0A	定位板	1				
SA1235-0A	送料定位板左	1				
SA1236-0A	送料定位板右	1				
SA1237-0A	彈簧	(1)				
SA1271-0A	押棒固定座	1				
SA1300-0A	連接臂	1				
SA1301-0A	彈簧	1				
SA1302-0A	抬臂	1				



I、CS-2383N 送料機構、壓縮裝置關係 FEED MECHANISM & CONDENSE COMPONENTS

零件號碼 Part No	零件名稱 Name of Part	件數 Q, TY	零件號碼 Part No	零件名稱 Name of Part	件數 Q, TY	備註 Remarks
51001645T0	止擋塊	1	WB051001	彈簧墊圈	1	
HB1470-1A	緩衝墊	1	WG000009	墊圈	(1)	
OAGM101804	油封	1	ZSA11004	螺絲	(2)	
OPP00900	O形環	1	ZSA16025	螺絲	2	
SA1150-0A	調整器	1	ZSB11029	螺絲	(1)	
SA1158-0A	彈簧	1	ZSB11129	螺絲	1	
SA1160-0A	倒縫柄	1	ZSB12012	螺絲	1	
SA1163-0A	套管	1	ZSB12046	螺絲	4	
SA1164-0A	固定環	1	ZSB12051	螺絲	1	
SA1167-0A	拉伸彈簧	1	ZSB12052	螺絲	1	
SA1168-0A	制動塊	1	ZSB12058	螺絲	1	
SA1170-0A	方牙棒	1	ZSB12063	轉絲	2	
SA1171-0A	銷	1	ZSG12046	螺絲	2	
SA1172-0A	刻度盤	1	ZSK11047	彈簧掛勾	1	
SA1175-0A	刻度盤	1	ZSK12028	螺絲	1	
SA1751-0A	調整螺桿底座	(1)	ZSL12004	螺帽	1	
SA1752-0A	調整螺絲	(1)				
SA1753-0A	制動塊	(1)				
SA1754-0A	軸套	(1)				
SA1755-0A	旋鈕	(1)				
SA1756-0A	制動刻度盤	(1)				
SA4156-0A	倒縫連接腕	1				

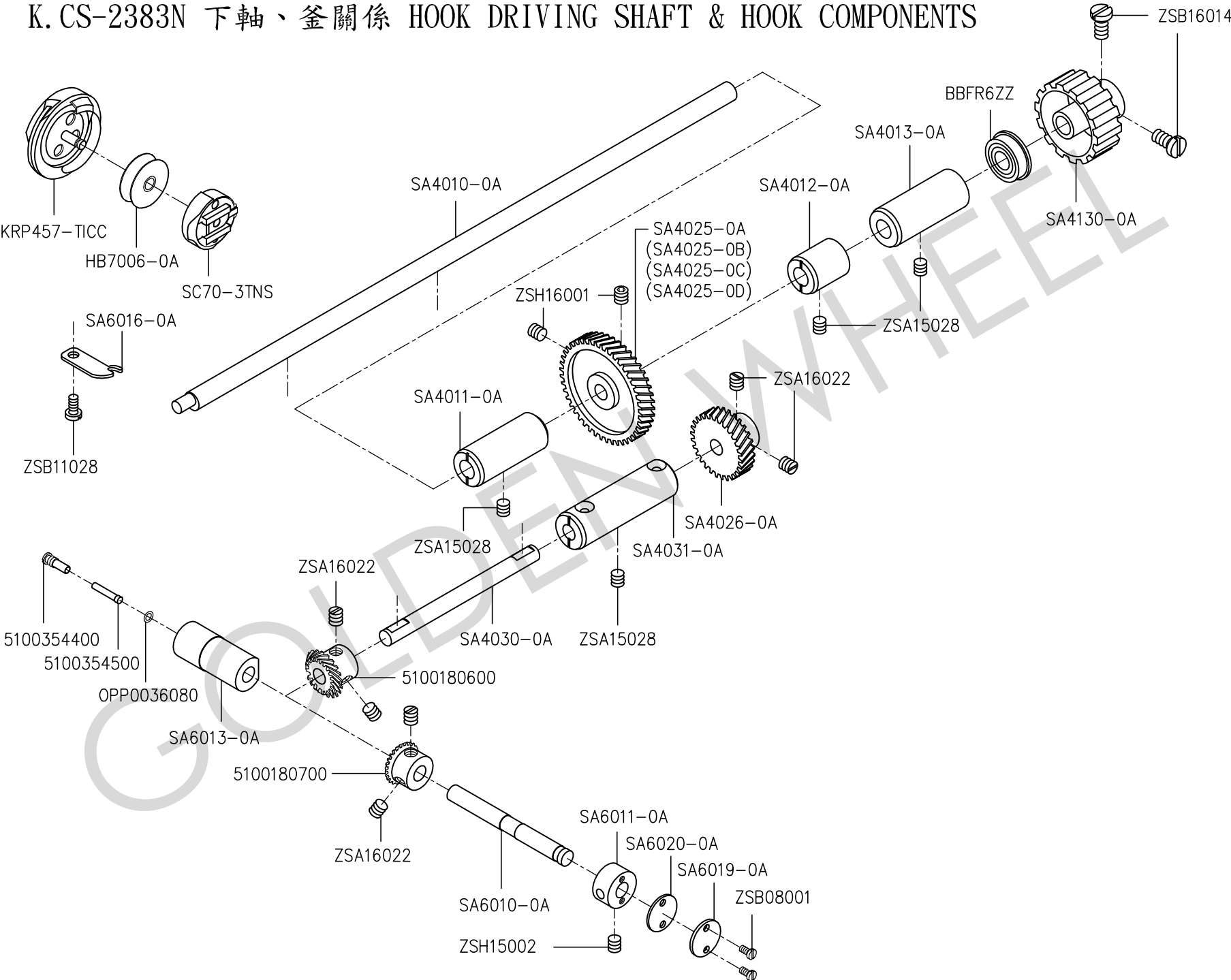
# J. CS-2383N 送料關係 FEED MECHANISM COMPONENTS



J、CS-2383N 送料關係 FEED MECHANISM COMPONENTS

零件號碼 Part No	零件名稱 Name of Part	件數 Q, TY	零件號碼 Part No	零件名稱 Name of Part	件數 Q, TY	備註 Remarks
BN222610A	套環 ----- BUSHING -----	1	SA4154-0A	滑塊固定板 - PLATE -----	1	
BN222610B	滾針軸承 ---- NEEDLE BEARING ----	1	SA4155-0A	平衡錘 ----- BALANCE WEIGHT COMPLY. -----	1	
BN222610C	軸承 ----- BEARING -----	1	SA4158-0A	擋板 ----- STOPPER PLATE -----	1	
BN222610D	軸承 ----- BEARING -----	1	WA070009	墊片 ----- SPACER -----	2	
EZ4031-0A	後套管 ----- FEED ROCKER SHAFT BUSHING, REAR -----	1	XB400056	油棉 ----- FELT -----	1	
HB1563-0A	止推塊 ----- THRUST COLLAR -----	(1)	ZSA15021	螺絲 ----- SCREW (15/64-28x4.5) -----	1	
RE000030	E扣環 ----- E-RING -----	1	ZSA15028	螺絲 ----- SCREW (15/64-28x7) -----	2	
SA4016-0A	偏心軸 ----- ECCENTRIC CAM -----	1	ZSA16010	螺絲 ----- SCREW (1/4-40x4.5) -----	(1)	
SA4017-0A	軸承座 ----- ROD -----	1	ZSA16014	螺絲 ----- SCREW (1/4-40x8) -----	2	
SA4018-0A	連接桿 ----- CONNECTING ROD -----	1	ZSB08038	螺絲 ----- SCREW (1/8-44x8) -----	2	
SA4019-0A	防護蓋 ----- SIDE DISC PLATE -----	1	ZSB11011	螺絲 ----- SCREW (11/64-40x9) -----	4	
SA4040-0A	下送料軸 ---- FEED ROCKER SHAFT ----	1	ZSB11029	螺絲 ----- SCREW (11/64-40x7) -----	1	
SA4041-0A	前套管 ----- BUSHING, FRONT -----	1	ZSB11114	螺絲 ----- SCREW (11/64-40x11) -----	2	
SA4045-0A	緊固套 ----- FEED ROCKER -----	1	ZSB12012	螺絲 ----- SCREW (3/16-28x15) -----	1	
SA4046-0A	傳動連接塊 -- FEED ROCKER SHAFT CRANK --	1	ZSB12053	螺絲 ----- SCREW (3/16-28x9) -----	2	
SA4050-0A	支架 ----- FEED BASE -----	1	ZSB12063	螺絲 ----- SCREW (3/16-28x14) -----	4	
SA4051-0A	偏心轉軸 ---- FEED BASE SHAFT ----	1	ZSD15006	螺絲 ----- SCREW (15/64-28x11) -----	2	
SA4055-0A	連接塊 ----- LINK -----	1	ZSG12046	螺絲 ----- SCREW (3/16-28x7.5) -----	2	
SA4056-0A	連接桿 ----- LINK SHAFT -----	1	ZSG18026	螺絲 ----- SCREW (9/32-28x13) -----	2	
SA4070-0A	連接軸 ----- FEED VARIABLE SHAFT -----	1	ZSJ08004	螺絲 ----- SCREW (1/8-40x7) -----	2	
SA4071-0A	套管 ----- BUSHING -----	1	ZSJ11006	螺絲 ----- SCREW (11/64-40x9.5) -----	2	
SA4072-0A	搖臂 ----- FEED VARIABLE ARM -----	1	ZSL12004	螺帽 ----- NUT (3/16-28) -----	2	
SA4073-0A	固定塊 ----- FEED REVERSAL LINK -----	1	ZSL18004	螺帽 ----- NUT (9/32-28) -----	2	
SA4074-0A	彈簧掛板 ---- TENSION SPRING RACK ----	1				
SA4075-0A	止擋塊 ----- REVERSE FEED LIMITER -----	1				
SA4076-0A	彈簧 ----- TENSION SPRING -----	1				
SA4149-0A	變換軸座 ---- BRACKET -----	1				
SA4150-0A	倒縫變換軸 -- FEED DRIVING ROCKER --	1				
SA4151-0A	圓柱銷 ----- PIN -----	1				
SA4152-0A	滑塊 ----- FEED DRIVING ROCKER BLOCK -----	2				
SA4153-0A	滑塊固定板 -- PLATE -----	1				

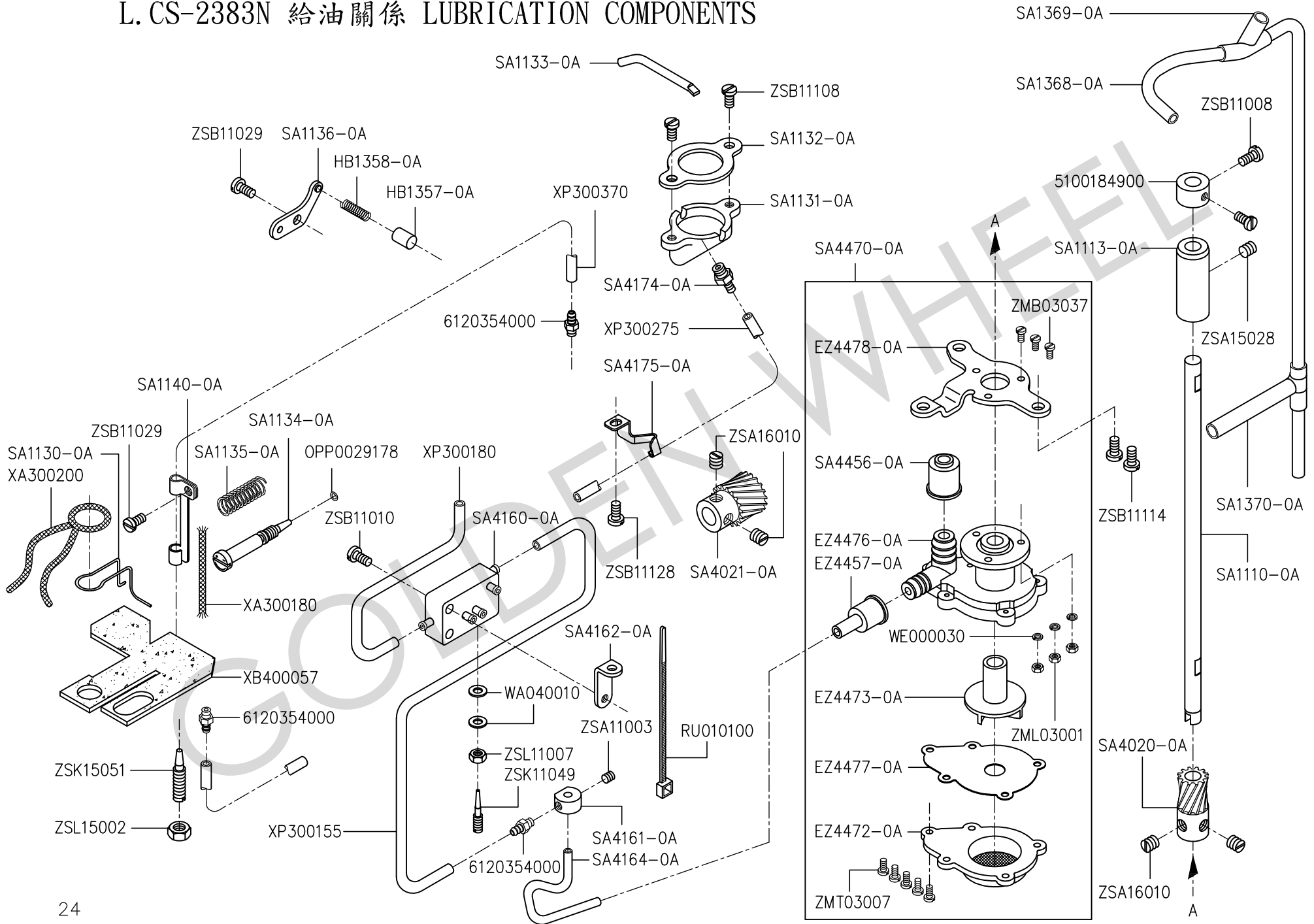
# K. CS-2383N 下軸、釜關係 HOOK DRIVING SHAFT & HOOK COMPONENTS



K、CS-2383N 下軸、釜關係 HOOK DRIVING SHAFT & HOOK COMPONENTS

零件號碼 Part No	零件名稱 Name of Part	件數 Q, TY	零件號碼 Part No	零件名稱 Name of Part	件數 Q, TY	備註 Remarks
5100180600	齒輪 ----- GEAR ASM. -----	1	ZSA15028	螺絲 ----- SCREW (15/64-28x7) -----	4	
5100180700	齒輪 ----- PINION ASM. -----	1	ZSA16022	螺絲 ----- SCREW (1/4-40x7) -----	6	
5100354400	螺絲 ----- OIL SEAL SCREW -----	1	ZSB08001	螺絲 ----- SCREW (1/8-44x6) -----	2	
5100354500	濾器 ----- OIL WICK -----	1	ZSB11028	螺絲 ----- SCREW (11/64-40x10) -----	1	
BBFR6ZZ	軸承 ----- BEARING -----	1	ZSB16014	螺絲 ----- SCREW (1/4-40x7) -----	2	
HB7006-0A	梭子 ----- BOBBIN -----	1	ZSH15002	螺絲 ----- SCREW (15/64-28x8) -----	1	
KRP457-TICC	大釜 ----- HOOK COMPLY. -----	1	ZSH16001	螺絲 ----- SCREW (1/4-40x6) -----	2	
OPP0036080	O形環 ----- RUBBER RING -----	1				
SA4010-0A	下軸 ----- HOOK DRIVING SHAFT -----	1				
SA4010-0B	銅塞 ----- COPPER PLUG -----	1				
SA4011-0A	下軸套管(前) BUSHING, FRONT -----	1				
SA4012-0A	下軸套管(中) BUSHING, INTERMEDIATE -----	1				
SA4013-0A	下軸套管(後) BUSHING, REAR -----	1				
SA4025-0A	齒輪 A ----- HELICAL GEAR A -----	1				
SA4025-0B	齒輪 B ----- HELICAL GEAR B -----	1				
SA4025-0C	齒輪 C ----- HELICAL GEAR C -----	1				
SA4025-0D	齒輪 D ----- HELICAL GEAR D -----	1				
SA4026-0A	齒輪 ----- HELICAL GEAR -----	1				
SA4030-0A	軸 ----- SHAFT -----	1				
SA4031-0A	套管 ----- BUSHING -----	1				
SA4130-0A	齒形皮帶輪 - HOOK DRIVING SHAFT SPROCKET -----	1				
SA6010-0A	釜軸 ----- HOOK SHAFT -----	1				
SA6011-0A	釜軸套管(後) HOOK SHAFT BUSHING, REAR -----	1				
SA6013-0A	釜軸套管(前) HOOK SHAFT BUSHING, FRONT -----	1				
SA6016-0A	牛角 ----- INNER HOOK STEPPER -----	1				
SA6019-0A	套管蓋 ----- BUSHING CAP -----	1				
SA6020-0A	襯墊 ----- GASKET -----	1				
SC70-3TNS	梭殼 ----- BOBBIN CASE ASM. -----	1				

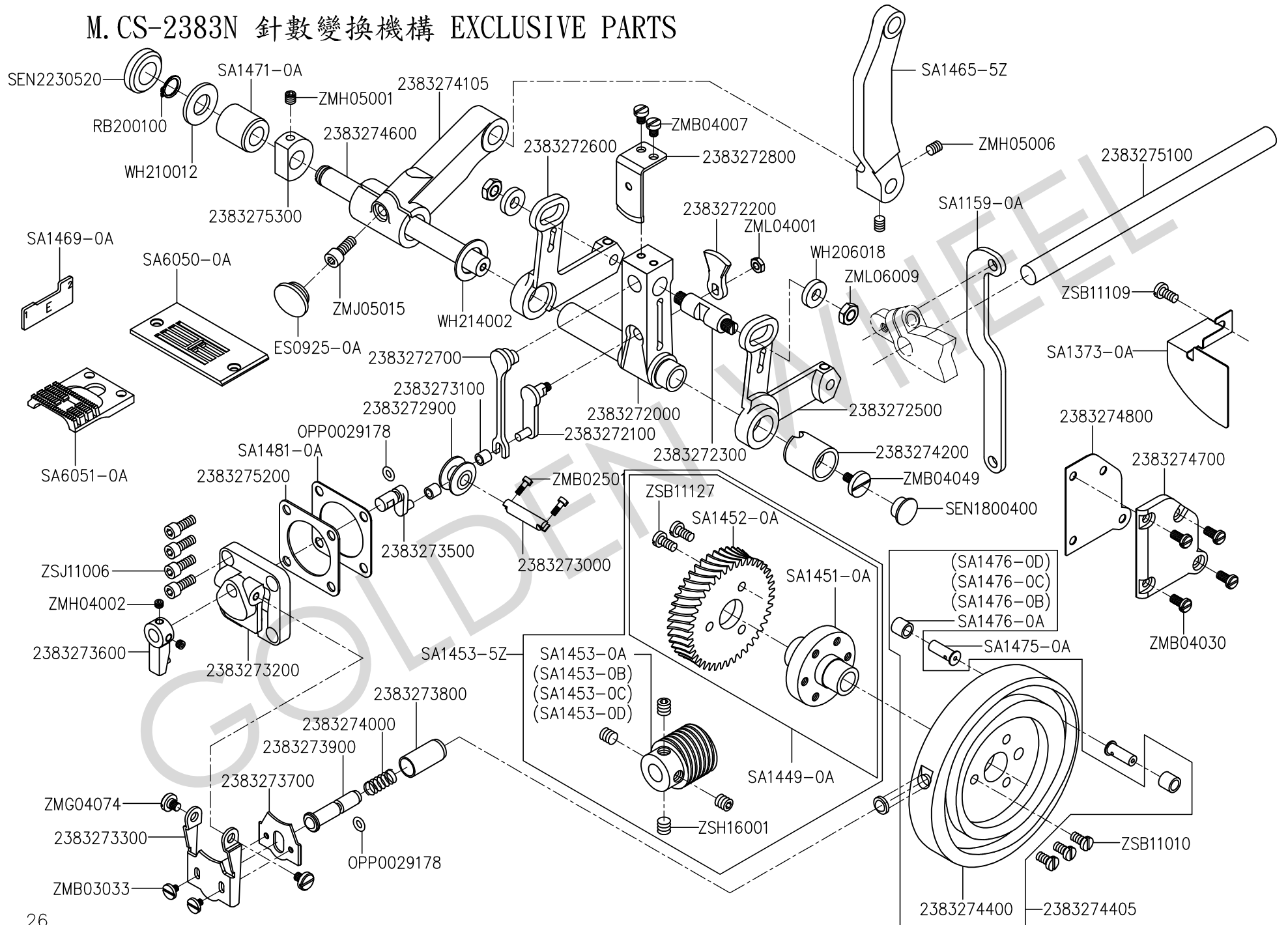
# L. CS-2383N 給油關係 LUBRICATION COMPONENTS



L、CS-2383N 給油關係 LUBRICATION COMPONENTS

零件號碼 Part No	零件名稱 Name of Part	件數 Q, TY	零件號碼 Part No	零件名稱 Name of Part	件數 Q, TY	備註 Remarks
5100184900	定環 ----- THRUST COLLAR -----	1	SA4174-0A	油嘴 ----- CONNECTING SCREW -----	1	
6120354000	接頭 ----- CONNECTING SCREW -----	4	SA4175-0A	油管固定板 - OIL FELT GUIDE -----	1	
EZ4457-0A	橡皮套 ----- RUBBER JOINT -----	(1)	SA4456-0A	橡皮套 ----- RUBBER JOINT -----	(1)	
EZ4472-0A	上蓋 ----- OIL PUMP IMPELLER COVER -----	(1)	SA4470-0A	給油泵浦組 - LUBRICATING OIL PUMP ASM. --	1	
EZ4473-0A	葉輪 ----- OIL PUMP IMPELLER -----	(1)	WA040010	墊圈 ----- WASHER -----	(2)	
EZ4476-0A	泵浦座 ----- LUBRICATING OIL PUMP -----	(1)	WE000030	墊圈 ----- WASHER -----	(3)	
EZ4477-0A	葉輪蓋 ----- LUBRICATING OIL PUMP COVER -----	(3)	XA300180	油線 ----- OIL WICK -----	2	
EZ4478-0A	泵浦固定座 -- OIL PUMP INSTALLING BASE -----	(1)	XA300200	油線 ----- OIL WICK -----	2	
HB1357-0A	柱塞 ----- PLUNGER -----	1	XB400057	油棉 ----- FELT -----	1	
HB1358-0A	彈簧 ----- PLUNGER SPRING -----	1	XP300155	油管 C ----- OIL TUBE -----	(1)	
OPP0029178	O 形環 ----- RUBBER RING -----	1	XP300180	油管 D ----- OIL TUBE -----	(1)	
RU010100	紮線帶 ----- CABLE BAND -----	1	XP300275	油管 A ----- OIL TUBE -----	3	
SA1110-0A	豎軸 ----- UPRIGHT SHAFT -----	1	XP300370	油管 B ----- OIL SUPPLY PIPE -----	1	
SA1113-0A	套管 ----- BUSHING -----	1	ZMB03037	螺絲 ----- SCREW (M3-0.5x10) -----	(3)	
SA1130-0A	油棉壓條 ---- FELT PRESSER -----	1	ZML03001	螺帽 ----- NUT (M3-0.5) -----	(3)	
SA1131-0A	油槽 ----- OIL TANK -----	1	ZMT03007	螺絲 ----- SCREW (M3-0.5x3) -----	(5)	
SA1132-0A	密封墊 ----- GASKET -----	1	ZSA11003	螺絲 ----- SCREW (11/64-40x5) -----	1	
SA1133-0A	油管 ----- OIL TUBE -----	1	ZSA15028	螺絲 ----- SCREW (15/64-28x7) -----	1	
SA1134-0A	油量調整螺絲 OIL REGULATING SCREW -----	1	ZSA16010	螺絲 ----- SCREW (1/4-40x4.5) -----	4	
SA1135-0A	彈簧 ----- SPRING -----	1	ZSB11008	螺絲 ----- SCREW (11/64-40x5) -----	2	
SA1136-0A	彈簧壓板 ---- PLUNGER THRUST PLATE -----	1	ZSB11010	螺絲 ----- SCREW (11/64-40x14) -----	(1)	
SA1140-0A	油管固定板 -- FELT ASM. -----	1	ZSB11029	螺絲 ----- SCREW (11/64-40x7) -----	3	
SA1368-0A	油管 ----- OIL SUPPLY PIPE ASM. -----	1	ZSB11108	螺絲 ----- SCREW (11/64-40x16) -----	2	
SA1369-0A	三通油管 ----- OIL SUPPLY PIPE -----	1	ZSB11114	螺絲 ----- SCREW (11/64-40x11) -----	2	
SA1370-0A	三通油管 ----- OIL SUPPLY PIPE -----	1	ZSB11128	螺絲 ----- SCREW (11/64-40x5) -----	1	
SA4020-0A	齒輪 ----- PUMP DRIVING GEAR -----	1	ZSK11049	螺絲 ----- SCREW (11/64-40) -----	(1)	
SA4021-0A	齒輪 ----- PUMP DRIVING GEAR -----	1	ZSK15051	螺絲 ----- SCREW (15/64-28) -----	1	
SA4160-0A	油管連接器 -- OIL REGULATING VALVE -----	(1)	ZSL11007	螺帽 ----- NUT (11/64-40) -----	(1)	
SA4161-0A	油嘴固定座 -- DISTRIBUTOR -----	1	ZSL15002	螺帽 ----- NUT (15/64-28) -----	1	
SA4162-0A	油座固定板 -- WIPER LINK JOINT -----	(1)				
SA4164-0A	油管 ----- OIL SUPPLY PIPE -----	1				

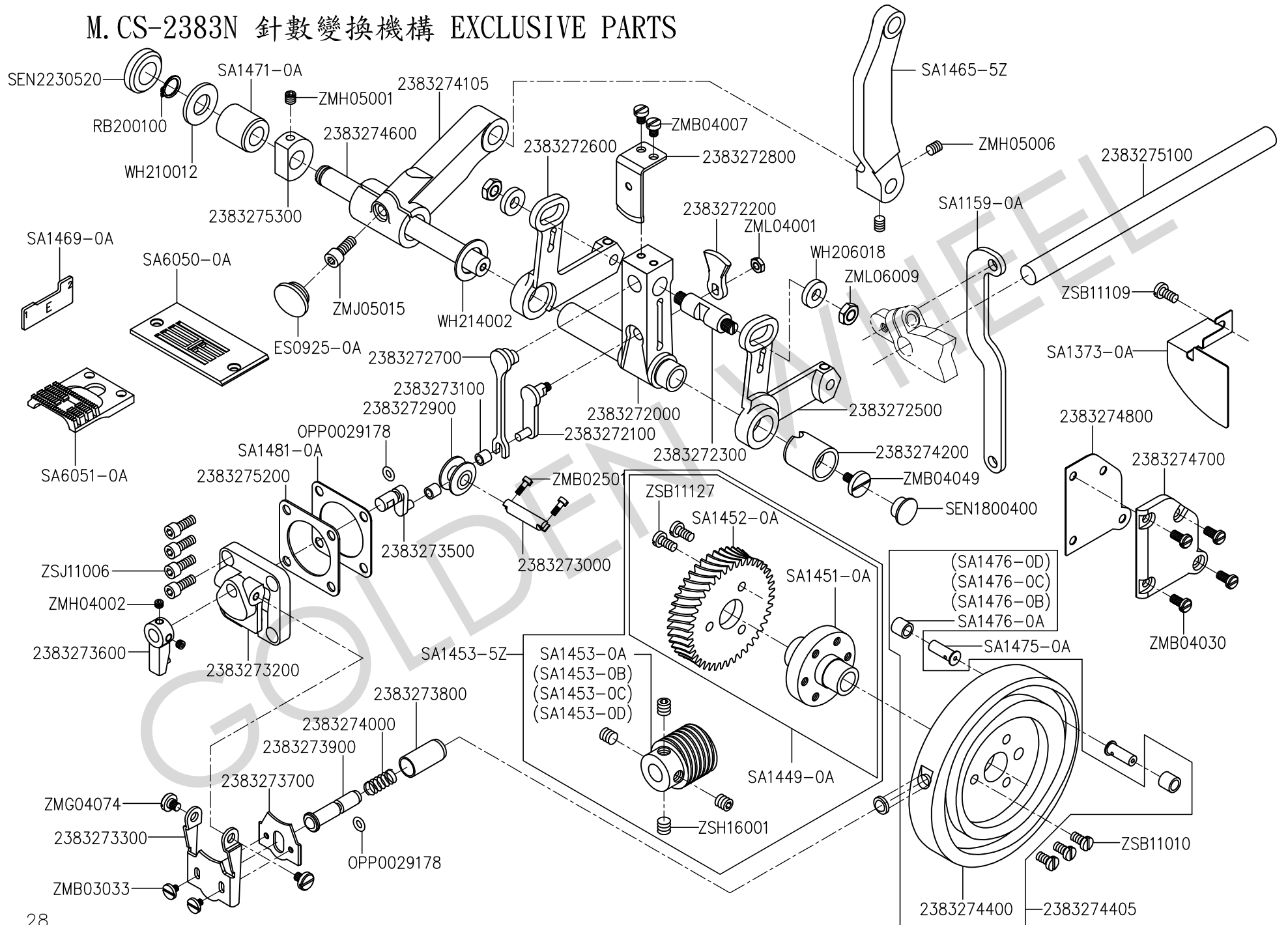
# M. CS-2383N 針數變換機構 EXCLUSIVE PARTS



M、CS-2383N 針數變換機構 EXCLUSIVE PARTS

零件號碼 Part No	零件名稱 Name of Part	件數 Q, TY	零件號碼 Part No	零件名稱 Name of Part	件數 Q, TY	備註 Remarks
2383272000	送針控制臂 -- NEEDLE DRIVING ARM	1	ES0925-0A	橡膠塞 ---- RUBBER PLUG	1	
2383272100	驅動軸 ----- DRIVING SHAFT	1	OPP0029178	O形環 ----- RUBBER RING	2	
2383272200	定位板 ----- POSITION PLATE	1	RB200100	扣環 ----- SNAP RING	1	
2383272300	加壓移動軸 -- MOVER SHAFT	1	SA1159-0A	連桿 ----- FEED CHANGE LINK	1	
2383272500	凸輪切換臂 -- CHANGE ARM	1	SA1373-0A	隔油板 ----- OIL SHIELD	1	
2383272600	凸輪切換臂 -- CHANGE ARM	1	SA1449-0A	蝸輪組 ----- WORM WHEEL COMPLY.	1	
2383272700	加壓桿 ----- LINK	1	SA1451-0A	套筒 ----- SLEEVE	1	
2383272800	蓋板 ----- COVER PLATE	1	SA1452-0A	蝸輪 ----- WORM WHEEL	1	
2383272900	變換凸輪 ---- CHANGE CAM	1	SA1453-0A	蝸桿 ----- WORM A	1	
2383273000	變換凸輪軸 -- CHANGE CAM SHAFT	1	SA1453-0B	蝸桿 B ----- WORM B	1	
2383273100	套管 ----- BUSHING	2	SA1453-0C	蝸桿 C ----- WORM C	1	
2383273200	變換座 ----- CHANGE OVER BASIS	1	SA1453-0D	蝸桿 D ----- WORM D	1	
2383273300	擋板 ----- PLATE	1	SA1453-5Z	蝸桿組 ---- WORM A	1	
2383273500	變換柄支軸 -- CHANGE OVER SLIDE SHAFT	1	SA1465-5Z	連桿 ----- NEEDLE DRIVING ROD	(1)	
2383273600	旋鈕 ----- CHANGE OVER LEVER	1	SA1469-0A	定規 ----- TIMING GAUGE	1	
2383273700	墊片 ----- WASHER	1	SA1471-0A	套管 ----- BUSHING	2	
2383273800	套管 ----- BUSHING	1	SA1475-0A	滾輪銷 ---- NEEDLE CAM ROLLER SHAFT	2	
2383273900	軸 ----- SHAFT	1	SA1476-0A	滾輪 A ----- NEEDLE CAM ROLLER A	2	
2383274000	彈簧 ----- SPRING	1	SA1476-0B	滾輪 B ----- NEEDLE CAM ROLLER B	2	
2383274105	送針控制臂 -- NEEDLE DRIVING ARM	1	SA1476-0C	滾輪 C ----- NEEDLE CAM ROLLER C	2	
2383274200	套管 ----- BUSHING	1	SA1476-0D	滾輪 D ----- NEEDLE CAM ROLLER D	2	
2383274400	針左右送凸輪 NEEDLE CAM	1	SA1481-0A	墊片 ----- WASHER	1	
2383274405	針左右送凸輪 NEEDLE CAM	1	SA6050-0A	針板 ----- NEEDLE PLATE	1	
2383274600	軸 ----- SHAFT	1	SA6051-0A	送料齒 ---- FEED DOG	1	
2383274700	前蓋 ----- COVER	1	SEN1800400	塞子 ----- PLUG	1	
2383274800	墊片 ----- WASHER	1	SEN2230520	橡膠塞 ---- RUBBER PLUG	1	
2383275100	倒縫柄軸 ---- FEED LEVER SHAFT	1	WH206018	墊圈 ----- WASHER	2	
2383275200	防油墊板 ---- OIL SHIELD	1	WH210012	墊圈 ----- WASHER	1	
2383275300	擋圈 ----- WASHER	1	WH214002	墊圈 ----- WASHER	1	

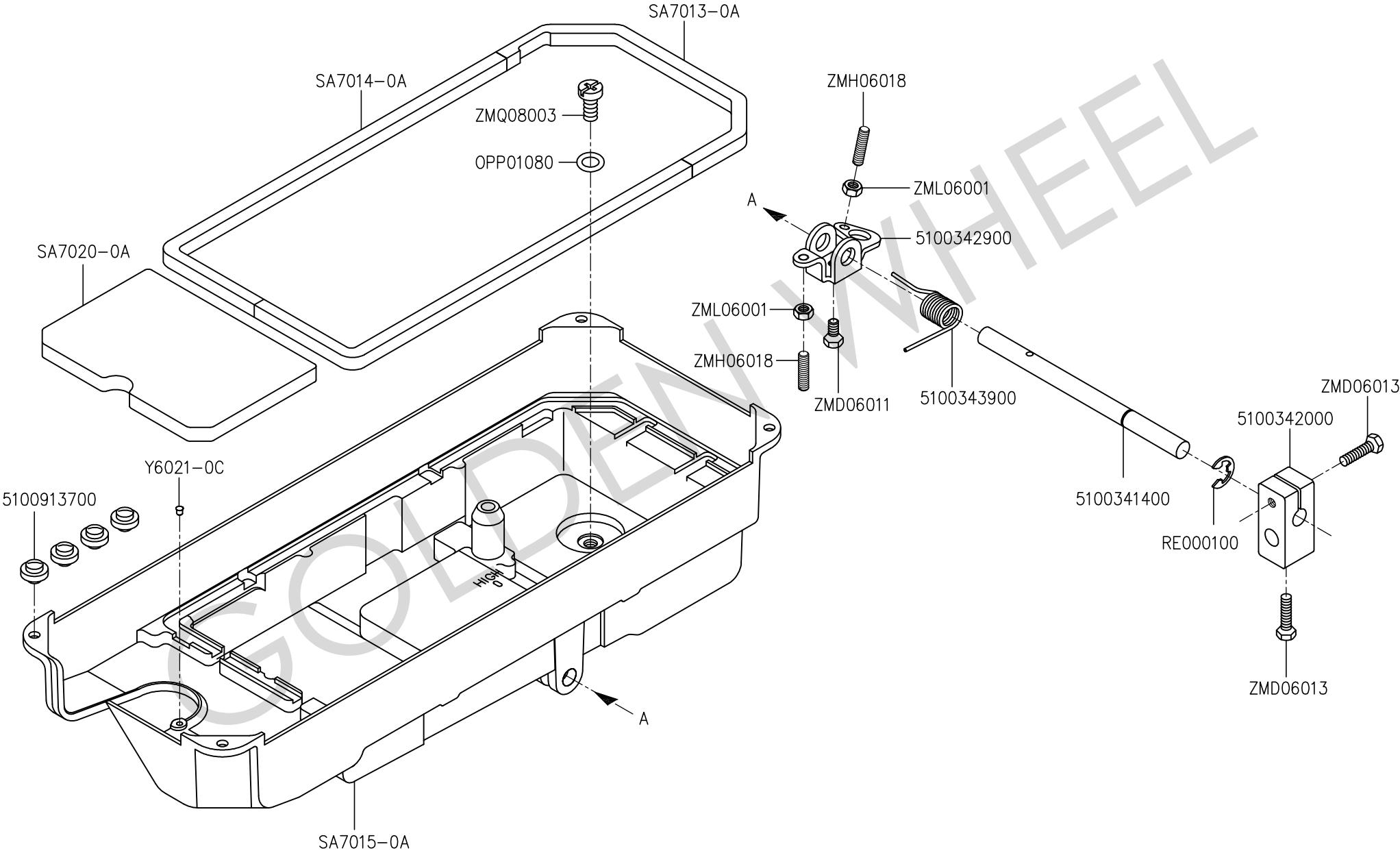
# M. CS-2383N 針數變換機構 EXCLUSIVE PARTS



M、CS-2383N 針數變換機構 EXCLUSIVE PARTS

零件號碼 Part No	零件名稱	Name of Part	件數 Q, TY	備註 Remarks
ZMB02501	螺絲	SCREW (M25-0.45x7)	2	
ZMB03033	螺絲	SCREW (M3-0.6x3)	2	
ZMB04007	螺絲	SCREW (M4-0.7x5)	2	
ZMB04030	螺絲	SCREW (M4-0.7x8)	4	
ZMB04049	螺絲	SCREW (M4-0.7x)	1	
ZMG04074	螺絲	SCREW (M4-0.7x5.1)	2	
ZMH04002	螺絲	SCREW (M4-0.7x6)	2	
ZMH05001	螺絲	SCREW (M5-0.8x5)	1	
ZMH05006	螺絲	SCREW (M5-0.8x4)	6	
ZMJ05015	螺絲	SCREW (M5-0.8x14)	(1)	
ZML04001	螺帽	NUT	1	
ZML06009	螺帽	NUT	2	
ZSB11010	螺絲	SCREW (11/64-40x14)	3	
ZSB11109	螺絲	SCREW (11/64-40x17.5)	1	
ZSB11127	螺絲	SCREW (11/64-40x10.5)	3	
ZSH16001	螺絲	SCREW (1/4-40x6)	4	
ZSJ11006	螺絲	SCREW (11/64-40x9.5)	4	

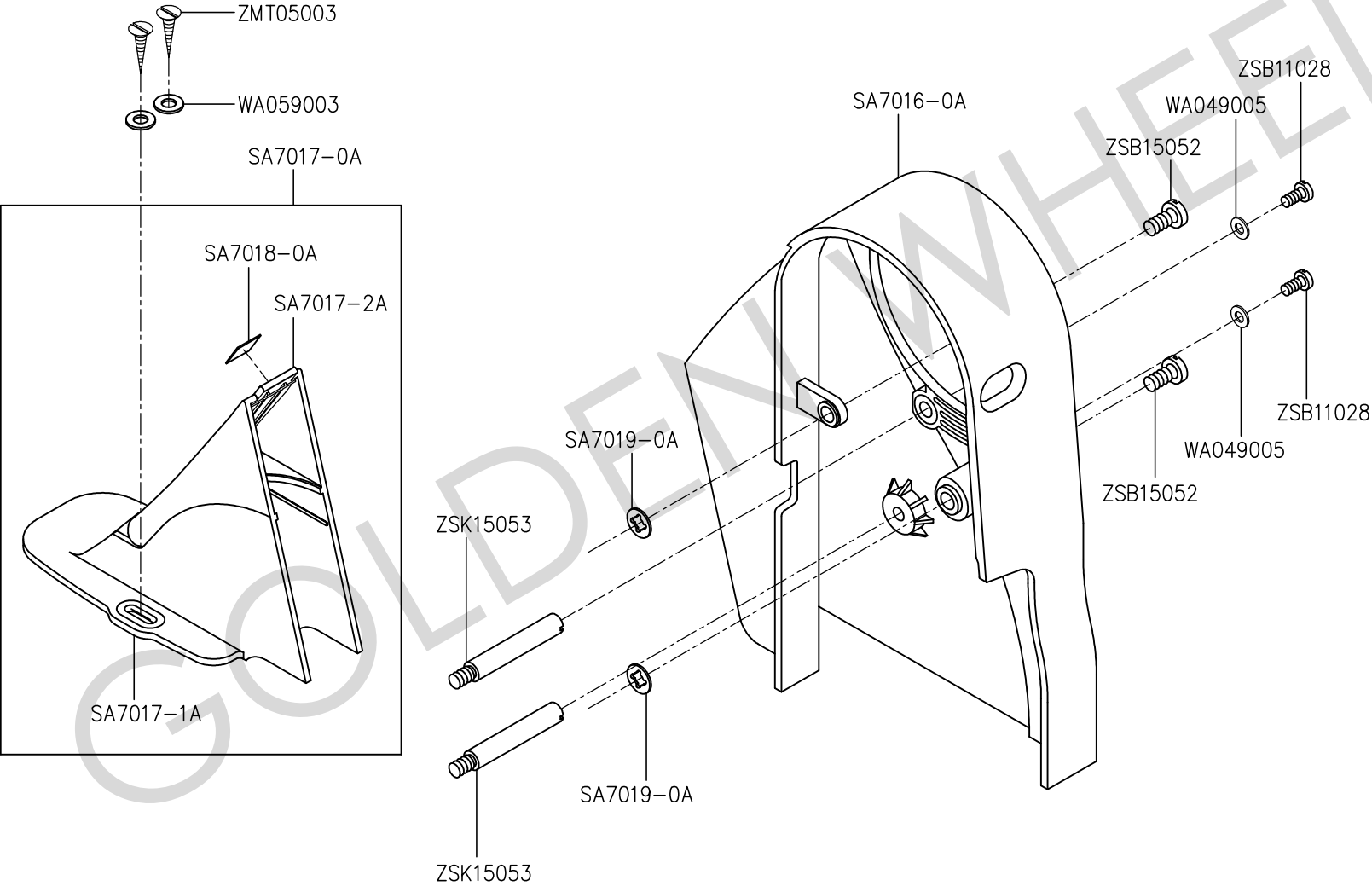
# N. CS-2383N 下油槽、腳弓關係 OIL RESERVOIR & KNEE LIFTER COMPONENTS



N、CS-2383N 下油槽、腳弓關係 OIL RESERVOIR & KNEE LIFTER COMPONENTS

零件號碼 Part No	零件名稱	Name of Part	件數 Q, TY	備註 Remarks
5100341400	腳押直桿	KNEE PRESS ROD	1	
5100342000	連接器	BRACKET	1	
5100342900	連接器	CONNECTING ROT, VERTICAL	1	
5100343900	彈簧	SPRING	1	
5100913700	防振橡膠	FRAME SUPPORT RUBBER	4	
OPP01080	O形環	OIL RESERVOIR	1	
RE000100	E形扣環	E-RING	1	
SA7013-0A	泡棉條	OIL RESERVOIR GASKET	1	
SA7014-0A	泡棉條	FRAME SUPPORT RUBBER CUSHION	2	
SA0715-0A	下油槽	OIL RESERVOIR ASM.	1	
SA7020-0A	海棉	FRAME SUPPORT RUBBER CUSHION	1	
Y6021-0C	塞子	PLUG	1	
ZMD06011	螺絲	SCREW (M6-1.0x20)	1	
ZMD06013	螺絲	SCREW (M6-1.0x24)	2	
ZMH06018	螺絲	SCREW (M6-1.0x30)	1	
ZML06001	螺帽	NUT (M6-1.0)	1	
ZMQ08003	螺絲	SCREW (M8-1.25x10)	1	

0. CS-2383N 皮帶蓋關係 BELT COVER COMPONENTS

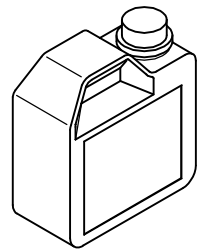


0、CS-2383N 皮帶蓋關係 BELT COVER COMPONENTS

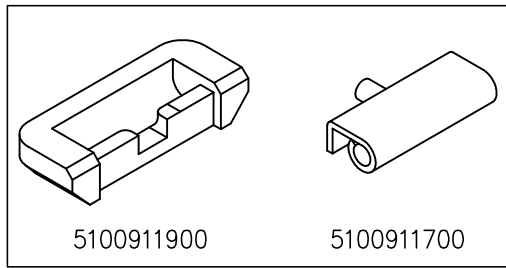
零件號碼 Part No	零件名稱	Name of Part	件數 Q, TY	備註 Remarks
SA7016-0A	大皮帶蓋	BELT COVER (LARGE)	1	
SA7017-0A	小皮帶蓋組	BELT COVER ASM. (SMALL)	1	
SA7017-1A	小皮帶蓋	BELT COVER (SMALL)	(1)	
SA7017-2A	蓋板	BELT COVER	(1)	
SA7018-0A	橡膠墊	RUBBER	(1)	
SA7019-0A	墊片	WASHER	2	
WA049005	墊圈	WASHER	2	
WA059003	墊圈	WASHER	2	
ZMT05003	木螺釘	SCREW (M5-0.8x18)	2	
ZSB11028	螺絲	SCREW (11/64-40x10)	2	
ZSB15052	螺絲	SCREW (15/64-28x12)	2	
ZSK15053	支撐螺桿	SCREW (15/64-28)	2	

GOLDEN WHEEL

# P. CS-2383N 附件 ACCESSORIES



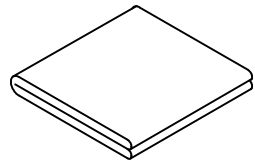
A7012-2A



5100911900

5100911700

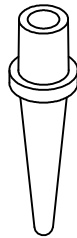
5100911705



C7001-0A



HB7006-0A



5100119000



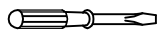
TLA020



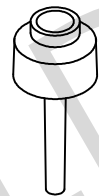
A7011-0A



TLA025



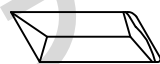
A7010-0A



EZ7032-0A



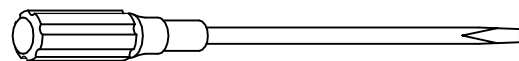
A7010-1A



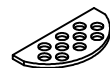
INDP x5 #16



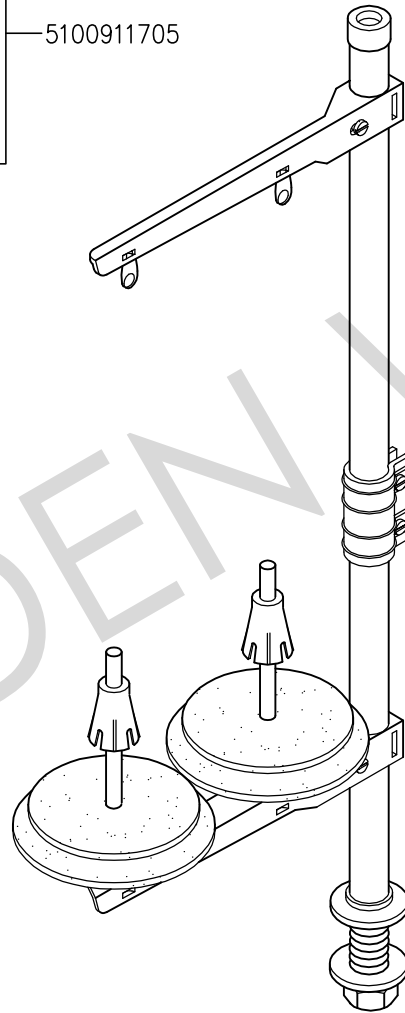
5100911500



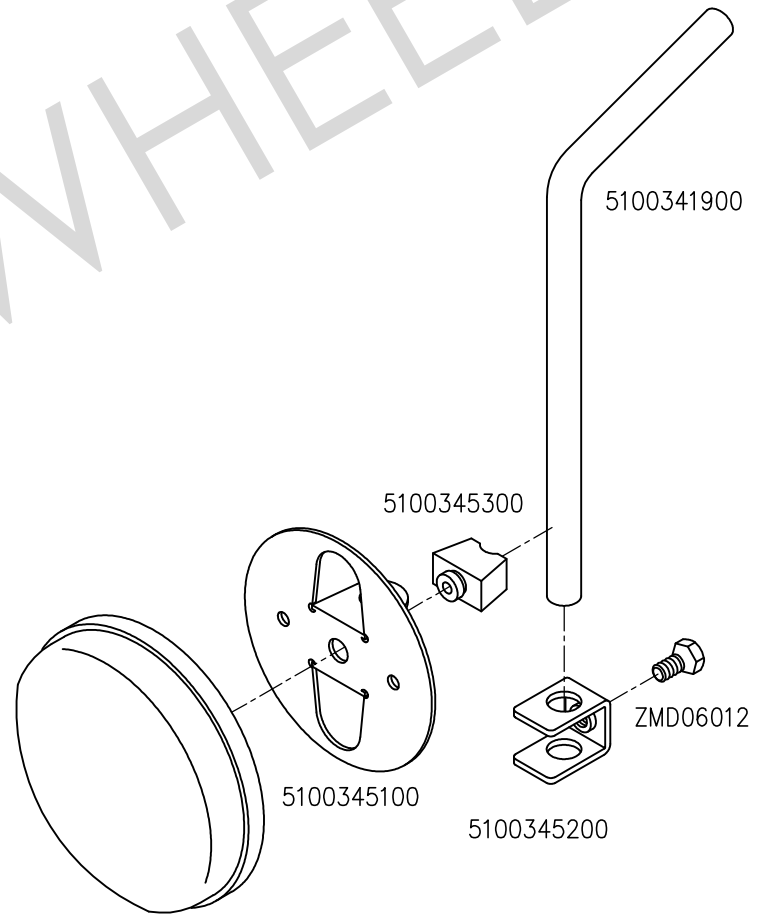
A7010-2A



5100911600



J7050-0A



5100345400

5100345300

5100341900

5100345100

5100345200

ZMD06012

P、2383N 附件 ACCESSORIES

零件號碼 Part No	零件名稱	Name of Part	件數 Q, TY	備註 Remarks
5100119000	枕木	HEAD REST WOOD	1	
5100341900	腳押曲桿	KNEE LEVER ROD	1	
5100345100	腳弓餅支架	KNEE PLATE	1	
5100345200	固定支架	RETAINER	1	
5100345300	橡膠	RUBBER	1	
5100345400	腳弓大餅	KNEE GUARD	1	
5100911500	防振橡膠	VIBRATION PREVENTING RUBBER	2	
5100911600	防振橡膠	VIBRATION PREVENTING RUBBER	2	
5100911700	後鈕	HEAD HINGE	2	
5100911705	後鈕座組	RUBBER HINGE ASM.	1	
5100911900	後鈕座	RUBBER HINGE	2	
A7010-0A	螺絲起子(大)	SCREW DRIVER (LARGE)	1	
A7010-1A	螺絲起子(中)	SCREW DRIVER (MIDDLE)	1	
A7010-2A	螺絲起子(小)	SCREW DRIVER (SMALL)	1	
A7011-0A	鐵釘	NAIL	8	
A7012-2A	油壺	OIL CAN	1	
C7001-0A	車頭蓋	COVER	1	
EZ7032-0A	膝控頂銷	PUSH PIN	1	
HB7006-0A	梭子	BOBBIN	2	
INDPx5#10	針	NEEDLE	2	
J7050-0A	線架	THREAD STAND	1	
TLA020	六角扳手 2.0	HEXAGONAL WRENCH 2.0mm	1	
TLA025	六角扳手 2.5	HEXAGONAL WRENCH 2.5mm	1	
ZMD06012	螺絲	SCREW (M6-1.0x11.6)	1	

Q、CS-2383N 零件號碼與頁數對照 NUMERICAL PARTS-LIST

零件號碼 PARTS NO.	頁數 PAGE	零件號碼 PARTS NO.	頁數 PAGE	零件號碼 PARTS NO.	頁數 PAGE	零件號碼 PARTS NO.	頁數 PAGE	零件號碼 PARTS NO.	頁數 PAGE
2383272000	26	3450321300	4	5100345400	34	EZ4473-0A	24	RB200060	4
2383272100	26	3450321400	4	5100354400	22	EZ4476-0A	24	RB200100	12, 14, 26
2383272200	26	3450321500	4	5100354500	8, 22	EZ4477-0A	24	RE000020	14
2383272300	26	3450321700	4	5100911500	34	EZ4478-0A	24	RE000030	20
2383272500	26	3450321800	4	5100911600	34	EZ7032-0A	34	RE000040	14
2383272600	26	3450322000	4	5100911700	34	HB1028-0A	6	RE000050	4, 16
2383272700	26	3450322100	4	5100911705	34	HB1102-1A	8	RE000060	16
2383272800	26	3450322404	4	5100911900	34	HB1144-0A	2	RE00006A	16
2383272900	26	3450322800	4	5100913700	30	HB1357-0A	24	RE000100	30
2383273000	26	4710320400	6	6120354000	24	HB1358-0A	24	RU010100	24
2383273100	26	5100119000	34	A1042-0A	6	HB1470-1A	18	SA0715-0A	30
2383273200	26	5100122600	8	A7010-0A	34	HB1563-0A	20	SA1010-0A	2
2383273300	26	5100150200	16	A7010-1A	34	HB7006-0A	22, 34	SA1010-1A	2
2383273500	26	5100150300	16	A7010-2A	34	INDPx5#10	10, 34	SA1011-0A	2
2383273600	26	5100150400	16	A7011-0A	34	J7050-0A	34	SA1011-1A	2
2383273700	26	5100150800	16	A7012-2A	34	KC103410	14	SA1012-0A	2
2383273800	26	5100151500	16	BB6204LU	8	KRP457-TICC	22	SA1012-1A	2
2383273900	26	51001645T0	18	BBFR6ZZ	22	OAGM101804	18	SA1013-0A	2
2383274000	26	5100180600	22	BN081208A	10	OBM000040	14	SA1013-1A	2
2383274105	26	5100180700	22	BN081208B	10	OP000500	10	SA1014-0A	2
2383274200	26	5100184900	24	BN081208C	10	OPG0440200	8	SA1015-0A	2
2383274400	26	51003155T0	6	BN081208D	10	OPP0029178	8, 24, 26	SA1015-1A	2
2383274405	26	51003157T0	6	BN222610A	20	OPP0036080	22	SA1019-0A	2
2383274600	26	5100341400	30	BN222610B	20	OPP0037178	16	SA1020-0A	6
2383274700	26	5100341900	34	BN222610C	20	OPP0040100	4	SA1020-1A	6
2383274800	26	5100342000	30	BN222610D	20	OPP0044240	8	SA1020-2A	6
2383275100	26	5100342900	30	C7001-0A	34	OPP00800	12	SA1021-0A	6
2383275200	26	5100343900	30	ES0925-0A	26	OPP00900	18	SA1021-2A	6
2383275300	26	5100345100	34	EZ4031-0A	20	OPP0092270	4	SA1022-0A	6
3450320104	4	5100345200	34	EZ4457-0A	24	OPP01080	30	SA1024-0A	6
3450321200	4	5100345300	34	EZ4472-0A	24	OPP02000	2	SA1025-0A	6

Q、CS-2383N 零件號碼與頁數對照 NUMERICAL PARTS-LIST

零件號碼 PARTS NO.	頁數 PAGE	零件號碼 PARTS NO.	頁數 PAGE	零件號碼 PARTS NO.	頁數 PAGE	零件號碼 PARTS NO.	頁數 PAGE	零件號碼 PARTS NO.	頁數 PAGE
SA1026-0A	6	SA1102-0A	8	SA1191-0A	16	SA1370-0A	24	SA1456-0B	12
SA1027-0A	6	SA1103-0A	8	SA1192-0A	16	SA1373-0A	26	SA1456-0C	12
SA1028-0A	6	SA1104-0A	8	SA1193-0A	16	SA1380-0A	2	SA1456-0D	12
SA1029-0A	6	SA1105-0A	8	SA1206-0A	16	SA1400-0A	14	SA1457-0A	12
SA1030-0A	6	SA1106-0A	8	SA1230-0A	16	SA1401-0A	14	SA1458-0A	12
SA1031-0A	6	SA1110-0A	24	SA1231-0A	16	SA1402-0A	14	SA1458-0B	12
SA1037-1A	6	SA1113-0A	24	SA1232-0A	16	SA1403-0A	14	SA1458-0C	12
SA1037-2A	6	SA1130-0A	24	SA1233-0A	16	SA1404-0A	14	SA1458-0D	12
SA1043-0A	6	SA1131-0A	24	SA1234-0A	16	SA1405-0A	14	SA1459-0A	12
SA1050-0A	6	SA1132-0A	24	SA1235-0A	16	SA1407-0A	14	SA1460-0A	12
SA1051-0A	2	SA1133-0A	24	SA1236-0A	16	SA1407-0B	14	SA1461-0A	12
SA1052-0A	2	SA1134-0A	24	SA1237-0A	16	SA1407-0C	14	SA1462-0A	12
SA1053-0A	2	SA1135-0A	24	SA1271-0A	16	SA1407-0D	14	SA1463-0A	12
SA1054-0A	6	SA1136-0A	24	SA1300-0A	16	SA1408-0A	14	SA1465-5Z	26
SA1064-0A	10	SA1140-0A	24	SA1301-0A	16	SA1409-0A	14	SA1469-0A	26
SA1065-0C	10	SA1141-0A	2	SA1302-0A	16	SA1410-0A	14	SA1471-0A	26
SA1066-0A	10	SA1150-0A	18	SA1310-0A	14	SA1411-0A	14	SA1475-0A	26
SA1067-0A	10	SA1158-0A	18	SA1311-0A	14	SA1412-0A	14	SA1476-0A	26
SA1070-0A	10	SA1159-0A	26	SA1312-0A	14	SA1413-0A	14	SA1476-0B	26
SA1071-0A	10	SA1160-0A	18	SA1313-0A	14	SA1414-0A	14	SA1476-0C	26
SA1073-0A	10	SA1163-0A	18	SA1314-0A	14	SA1449-0A	26	SA1476-0D	26
SA1074-0A	10	SA1164-0A	12, 18	SA1315-0A	14	SA1450-1A	12	SA1481-0A	26
SA1076-0A	10	SA1167-0A	18	SA1316-0A	14	SA1451-0A	26	SA1520-0A	8
SA1078-0A	2	SA1168-0A	18	SA1320-0A	8	SA1452-0A	26	SA1522-0A	4
SA1081-0A	10	SA1170-0A	18	SA1322-0A	8	SA1453-0A	26	SA1525-0A	4
SA1082-0A	10	SA1171-0A	18	SA1340-0A	10	SA1453-0B	26	SA1532-0A	4
SA1090-0A	10	SA1172-0A	18	SA1341-0A	10	SA1453-0C	26	SA1534-0A	4
SA1092-0A	10	SA1175-0A	18	SA1343-0A	10	SA1453-0D	26	SA1536-0A	4
SA1099-0A	8	SA1180-0A	16	SA1361-0A	2	SA1453-5Z	26	SA1751-0A	18
SA1100-0A	8	SA1185-0A	16	SA1368-0A	24	SA1455-0A	12	SA1752-0A	18
SA1101-0A	8	SA1190-0A	16	SA1369-0A	24	SA1456-0A	12	SA1753-0A	18

Q、CS-2383N 零件號碼與頁數對照 NUMERICAL PARTS-LIST

零件號碼 PARTS NO.	頁數 PAGE	零件號碼 PARTS NO.	頁數 PAGE	零件號碼 PARTS NO.	頁數 PAGE	零件號碼 PARTS NO.	頁數 PAGE	零件號碼 PARTS NO.	頁數 PAGE
SA1754-0A	18	SA4051-0A	20	SA4174-0A	4, 24	WA030008	14	XP300370	24
SA1755-0A	18	SA4055-0A	20	SA4175-0A	24	WA040010	24	Y6021-0C	30
SA1756-0A	18	SA4056-0A	20	SA4360-0A	4	WA049005	32	YA020165	16
SA3523-0A	4	SA4070-0A	20	SA4365-0A	4	WA059003	32	YA060272	10
SA3542-0A	8	SA4071-0A	20	SA4456-0A	24	WA059006	12	YA079280A	12
SA4010-0A	22	SA4072-0A	20	SA4470-0A	24	WA060031	2	YA079280B	12
SA4010-0B	22	SA4073-0A	20	SA6010-0A	22	WA070009	20	YA079280C	12
SA4011-0A	22	SA4074-0A	20	SA6011-0A	22	WA100003	16	YA079280D	12
SA4012-0A	22	SA4075-0A	20	SA6013-0A	22	WARN000108	4	YD040025	10
SA4013-0A	22	SA4076-0A	20	SA6016-0A	22	WARN000320	4	ZMB02501	28
SA4016-0A	20	SA4081-0A	4	SA6019-0A	22	WARN000500	4	ZMB03033	28
SA4017-0A	20	SA4084-0A	4	SA6020-0A	22	WB051001	18	ZMB03036	16
SA4018-0A	20	SA4085-0A	4	SA6050-0A	26	WE000030	24	ZMB03037	24
SA4019-0A	20	SA4130-0A	22	SA6051-0A	26	WG000006	2	ZMB04007	28
SA4020-0A	24	SA4149-0A	20	SA7013-0A	30	WG000008	14	ZMB04030	28
SA4021-0A	24	SA4150-0A	20	SA7014-0A	30	WG000009	18	ZMB04049	28
SA4025-0A	22	SA4151-0A	20	SA7016-0A	32	WG000010	14	ZMD06011	30
SA4025-0B	22	SA4152-0A	20	SA7017-0A	32	WH206018	26	ZMD06012	34
SA4025-0C	22	SA4153-0A	20	SA7017-1A	32	WH210012	26	ZMD06013	30
SA4025-0D	22	SA4154-0A	20	SA7017-2A	32	WH210015	14	ZMG04074	28
SA4026-0A	22	SA4155-0A	20	SA7018-0A	32	WH210016	14	ZMH04002	28
SA4027-0A	4	SA4156-0A	18	SA7019-0A	32	WH214002	26	ZMH04003	14
SA4028-0A	4	SA4158-0A	20	SA7020-0A	30	XA200120	10	ZMH05001	28
SA4029-0A	4	SA4160-0A	24	SC70-3TNS	22	XA300180	24	ZMH05006	28
SA4030-0A	22	SA4161-0A	24	SEN0880540	2	XA300200	24	ZMH06018	30
SA4031-0A	22	SA4162-0A	24	SEN1250700	2	XB118002	6	ZMJ05015	28
SA4040-0A	20	SA4164-0A	24	SEN1800400	26	XB400056	20	ZML03001	24
SA4041-0A	20	SA4170-0A	4	SEN2230520	26	XB400057	24	ZML04001	28
SA4045-0A	20	SA4171-0A	4	TLA020	34	XP300155	24	ZML06001	30
SA4046-0A	20	SA4172-0A	4	TLA025	34	XP300180	24	ZML06009	28
SA4050-0A	20	SA4173-0A	4	WA030007	14	XP300275	24	ZMQ08003	30

Q、CS-2383N 零件號碼與頁數對照 NUMERICAL PARTS-LIST

零件號碼 PARTS NO.	頁數 PAGE	零件號碼 PARTS NO.	頁數 PAGE	零件號碼 PARTS NO.	頁數 PAGE	零件號碼 PARTS NO.	頁數 PAGE	零件號碼 PARTS NO.	頁數 PAGE
ZMR05002	14	ZSB09032	10, 14, 16	ZSB16014	22	ZSL11007	6, 24		
ZMT03007	24	ZSB09040	14	ZSB18011	8	ZSL12002	16		
ZMT05003	32	ZSB09061	4	ZSC09005	2	ZSL12004	18, 20		
ZSA11002	6	ZSB09082	14	ZSC09006	4	ZSL15002	14		
ZSA11003	24	ZSB11008	24	ZSC09012	4	ZSL15002	24		
ZSA11004	18	ZSB11010	24, 28	ZSC09032	10	ZSL18004	20		
ZSA12010	10	ZSB11011	12, 20	ZSC11007	2	ZSL20013	4		
ZSA15004	8	ZSB11028	2, 4, 10, 22,	ZSC11011	2	ZSN16001	6		
ZSA15010	8		32	ZSD09007	12	ZSQ09010	2		
ZSA15021	16, 20	ZSB11029	10, 18, 20,	ZSD15006	20	ZSR09001	14		
ZSA15028	12, 20, 22,		24	ZSE09001	16				
	24	ZSB11032	6	ZSG11084	16				
ZSA15050	16	ZSB11104	4, 16	ZSG12046	18, 20				
ZSA16010	20, 24	ZSB11108	24	ZSG12063	16				
ZSA16012	12	ZSB11109	28	ZSG12078	16				
ZSA16014	20	ZSB11114	20, 24	ZSG12080	2				
ZSA16019	12	ZSB11127	28	ZSG15033	14				
ZSA16021	12	ZSB11128	4, 24	ZSG15081	16				
ZSA16022	22	ZSB11129	18	ZSG18026	20				
ZSA16025	8, 12, 18	ZSB12012	18, 20	ZSH15002	22				
ZSA16045	12	ZSB12046	2, 18	ZSH16001	22, 28				
ZSA18001	8	ZSB12051	18	ZSJ08004	20				
ZSB06004	4	ZSB12052	18	ZSJ11006	20, 28				
ZSB08001	22	ZSB12053	20	ZSK11047	18				
ZSB08010	2, 10	ZSB12058	14, 18	ZSK11049	24				
ZSB08038	20	ZSB12062	4	ZSK12028	18				
ZSB08045	14	ZSB12063	12, 18, 20	ZSK12033	16				
ZSB09007	14, 16	ZSB12064	2, 14	ZSK15018	10				
ZSB09010	12	ZSB12065	2	ZSK15051	24				
ZSB09017	4	ZSB15007	8	ZSK15053	32				
ZSB09029	6, 14	ZSB15052	32	ZSK24009	16				