


 **Kansai Special**  
Industrial Sewing Machine

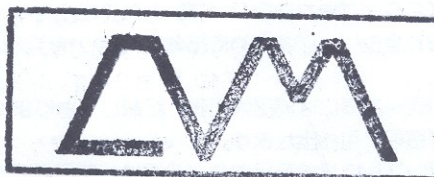
*Jean*

# PARTS LIST

# DWK

DWK-1802D  
DWK-1803D  
DWK-1804D  
DWK-1802F  
DWK-1803F  
DWK-1802EMK  
DWK-1803EMK  
DWK-1802EM  
DWK-1803EM  
DWK-1802DE  
DWK-1803DE  
DWK-1842  
DMM-2202FA  
DMM-2202DA  
DMM-2203FA  
DMM-2203DA

 - LOJA



**CAVEMAC IND. COML.  
DE MÁQS. IMP. EXP. LTDA.**  
Rua: Newton Prado, 333 Bom Retiro  
Capital - S. Paulo (BR) CEP 01127-000  
PABX: (11) 3226-9200  
TELEVENDAS: (11) 3226-9222  
FAX: (11) 3226-9333  
UTILIDADE PÚBLICA: (11) 3226-9444  
Site: [www.cavemac.com.br](http://www.cavemac.com.br)  
E-mail: [cavemac@cavemac.com.br](mailto:cavemac@cavemac.com.br)

## Foreword

**Thank you for purchasing a Kansai Special DWK Series sewing machine.**  
Use this Parts List for easy identification and ordering of DWK series repair and replacement parts.

This Parts List is based on DWK-1802, 1803 F-type and D-type as standard machines.

You will find listings for reference numbers, parts numbers, parts names and quantities required.

For parts common to all the DWK series machines, see pages 1—12.

For parts used only subclass models (those marked with ★), refer to pages 18—26. Parts described by dotted line or marked with ★★ are the same as those used in standard models (F-type or D-type)

Mechanism of gauge parts for all the DWK series are described in pages 13—16. See page 17 for gauge parts list.

By referring to the index on pages 33—37, you can easily find the drawings and names for any parts number.

When ordering, please specify the following.

(Example)	Model	Needle Gauge	Ref. No.	Parts No.	Q'ty
	(DWK-1842)	(1/4")	(P21, 31)	(45-921)	(1)

In the drawings, the parts shown in boxes indicate a set of parts. When ordering, please specify the assembly number.

(Example)	Model	Needle gauge	Ref. No.	Assembly No.	Unit
	(DWK-1842)	(1/4")	(P21, 815-A)	(40-180)	(1 set)

This Parts List is valid for machines manufactured after November 1, 1977. Due to frequent design improvements, components and parts numbers may be changed in the future.

## パーツリスト御利用に際して

DWKシリーズ製品お買い上げいただきありがとうございました。

本パーツリストは、DWKシリーズミシンの修理用部品が容易に御利用いただけるよう編集されております。

DWK-1802・1803、Fタイプ及びDタイプを基本機種として、機構別に収録され、部品図解頁の下側または右側の頁に参照番号、部品番号、名称、使用数量の順で記載されております。1頁から12頁を参照して下さい。参照番号に★印の付いた部品は基本機種以外のサブクラス機種になると異なる部品です。18頁～26頁を参照して下さい。サブクラス機種で、部品図解が点線で描かれている部品、または参照番号に★★印の付いている部品は基本機種（FタイプまたはDタイプ）と共通部品です。ゲージ関係部品に関しては13頁～16頁にDWK全シリーズまとめて記載しております。17頁のゲージ表と合わせて御利用下さい。

また、33頁～37頁には部品索引表を記載しておりますので部品番号のみで、その図解、名称などが容易に引き出せます。

本パーツリストに基き部品御注文の際は、部品番号を必ず明示して下さい。

(例)	機種名	針巾	参照番号	部品番号	数量
	(DWK-1842)	(1/4")	(P21, 31)	(45-921)	(1個)

部品図解中で枠内の部品に関しては、アッセンブリー番号を御使用下さい

(例)	機種名	針巾	参照番号	アッセンブリー番号	数量
	(DWK-1842)	(1/4")	(P21, 815-A)	(40-180)	(1セット)

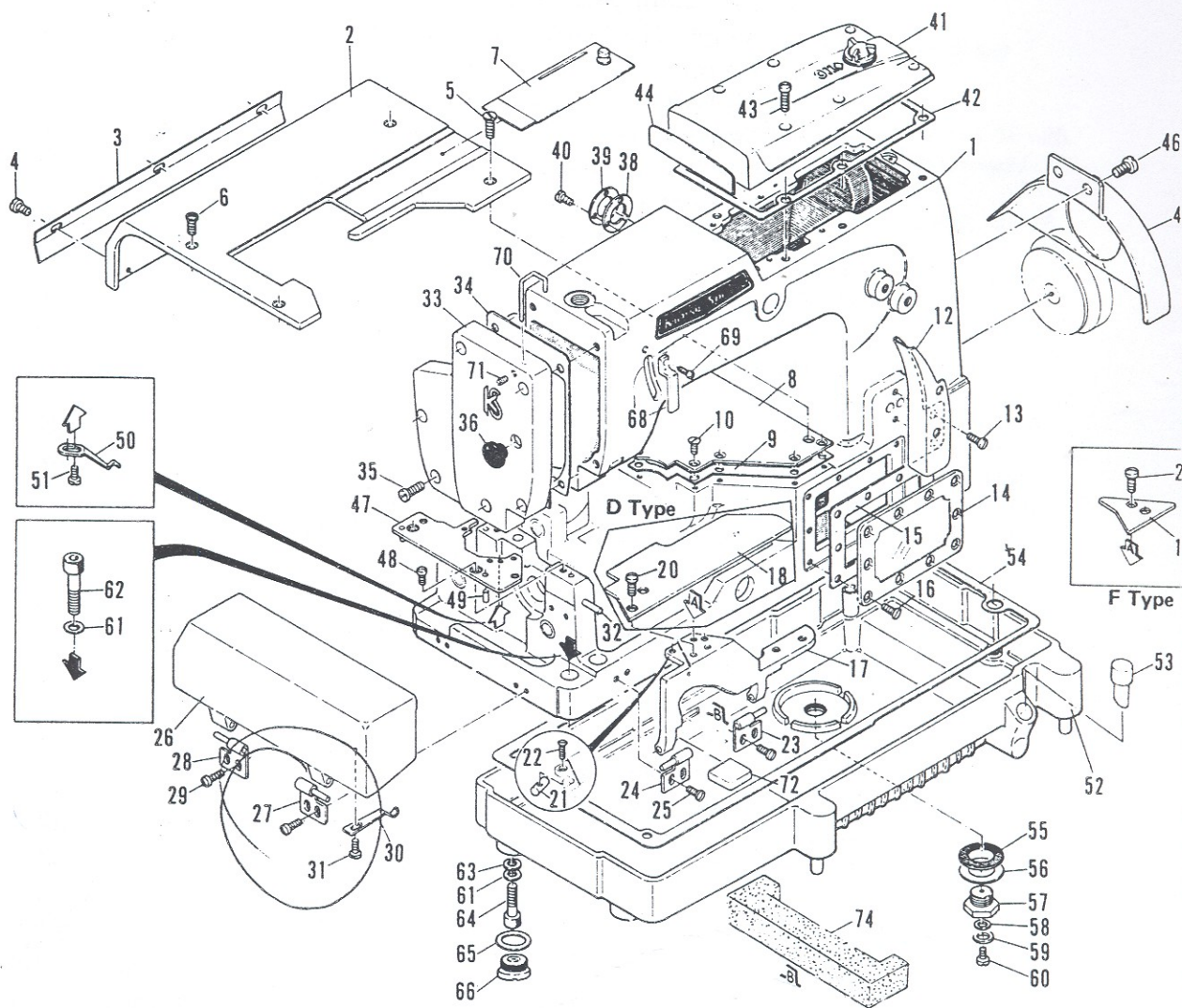
本パーツリストは、1977年12月現在製造中のミシンを基に作成されております。

部品番号、部品形状などは設計変更により変わる場合があります。

## Contents

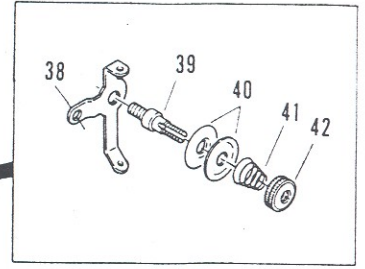
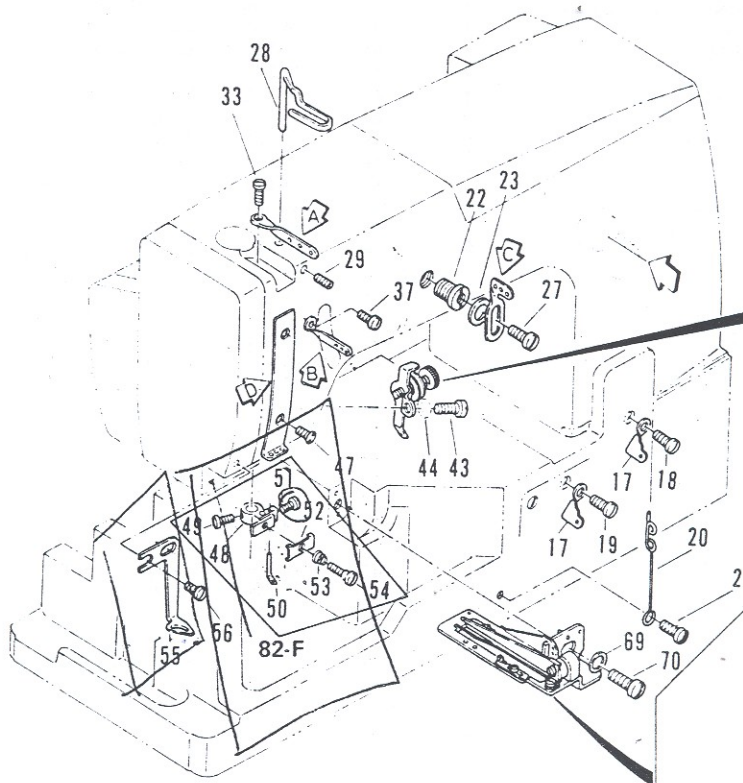
1. Housing components (カバー関係) .....	1
2. Thread eyelet components (糸道関係) .....	3
3. Bushings (ブッシュ関係) .....	5
4. Oil lubrication apparatus (給油関係) .....	6
5. Needle lever crank (弓・クランク機構) .....	7
6. Feed rocker (送り機構) .....	9
7. Looper (ルーパー機構) .....	10
8. Foot lifter components (押え上げ機構) .....	11
9. Upper shaft components (上飾り機構) .....	12
10. Gauge parts (1) (ゲージ関係(1)) .....	13
11. Gauge parts (2) (ゲージ関係(2)) .....	15
12. Gauge lists (ゲージ表) .....	17
Subclass models	
13. 1802FK .....	18
14. EM•EMK attachment (EM・EMK関係) .....	19
15. 1842 (Thread eyelet components) (糸道関係) .....	21
16. 1842 (Needle lever crank) (弓・クランク機構) .....	22
17. 1842 (Feed rocker) (送り機構) .....	23
18. 1842 (Looper) (ルーパー機構) .....	24
19. DMM (Thread eyelet components) (糸道関係) .....	25
20. DMM (Upper shaft components) (上飾り機構) .....	26
21. Rear cutter (MC-10) (後カッター装置) .....	27
22. Attachments (アタッチメント) .....	29
23. Thread stands (糸立て) .....	30
24. Tape stands•accessories (テープ立て・アクセサリ) .....	31
25. Table stand installation diagram (テーブルスタンド据付図) .....	32
26. Index (索引) .....	33

# 1. Housing components (カバー関係)

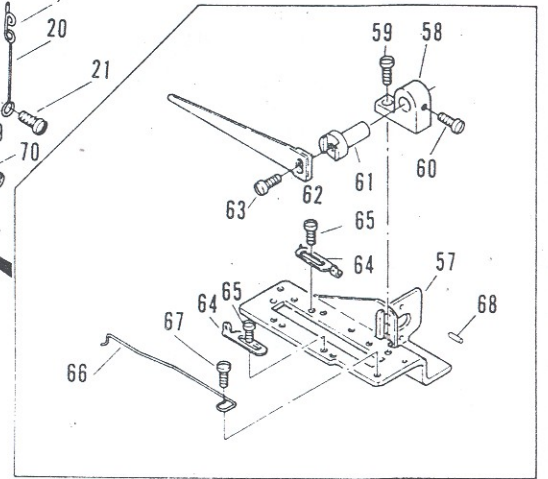


Ref. No.	Part No.	Part Name	Q'ty	Ref. No.	Part No.	Part Name	Q'ty
1	22-851	Arm bed (DWK)	1	38	23-263	Oil seal plate gasket	1
*	22-854	Arm bed (EMK)	1	39	39-108	Oil seal plate	1
*	22-852	Arm bed (FK)	1	40	84-362	Screw	3
*	22-841	Arm bed (DMM)	1	41	21-208	Crank chamber oil cover	1
*2	21-501	Upper cloth plate	1	42	23-206	Crank chamber oil gasket	1
3	21-441	Supporting cover	1	43	84-566	Screw	6
4	84-574	Screw	3	44	23-207	Oil cover gasket	1
5	84-861	Screw	2	45	21-402	Pulley cover	1
6	84-862	Screw	2	46	84-571	Screw	2
7	21-521	Slide plate	1	*47	14-031	Needle plate support	1
8	21-513	Oil reservoir top cover	1	48	84-761	Screw	2
9	23-223	Oil reservoir top gasket	1	49	71-251	Knock pin	2
10	84-661	Screw	8	50	79-501	Ruler holder spring	1
11				51	84-361	Screw	2
12	21-131	Tension post cover	1	52	31-203	Oil reservoir	1
13	84-361	Screw	2	53	39-213	Oil gauge	1
14	21-122	Oil reservoir front cover	1	54	23-402	Oil reservoir gasket	1
15	23-232	Oil reservoir front gasket	1	55	23-299	Drain gasket	1
16	84-664	Screw	10	56	75-469	Washer	1
17	21-101	Ruler holder	1	57	87-810	Screw	1
18	21-111	Ruler plate	1	58	23-301	Seal gasket	1
19	21-113	Ruler plate for F type	1	59	75-453	Washer	1
20	84-572	Screw	2	60	84-761	Screw	1
21	71-401	Spring pin	1	61	75-446	Washer	2
22	84-462	Screw	1	62	85-628	Screw	2
23	25-101	Hinge right	1	63	23-260	Seal gasket	2
24	25-102	Hinge left	1	64	85-627	Screw	2
25	84-571	Screw	4	65	23-302	Gasket	2
26	21-301	Side cloth plate	1	66	87-756	Screw	2
27	25-101	Hinge right	1	67			
28	25-102	Hinge left	1	68	21-711	Needle lever eyelet safety plate	1
29	84-571	Screw	4	69	84-363	Screw	1
30	79-502	Side cloth plate spring	1	70	21-701	Needle bar eyelet safety bar	1
31	84-571	Screw	1	*71	84-521	Screw	1
32	71-301	Spring pin	1	72	39-163	Filter	2
*33	21-317	Head cover	1	73			
34	23-217	Head cover gasket	1	74	39-161	Filter	1
35	84-566	Screw	5	75			
36	23-161	Oil seal cover	1	76			
37				77			

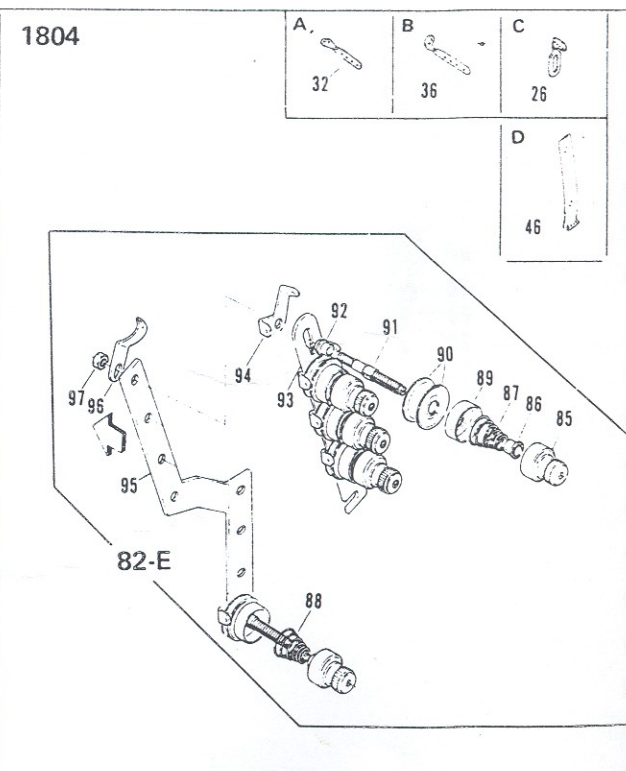
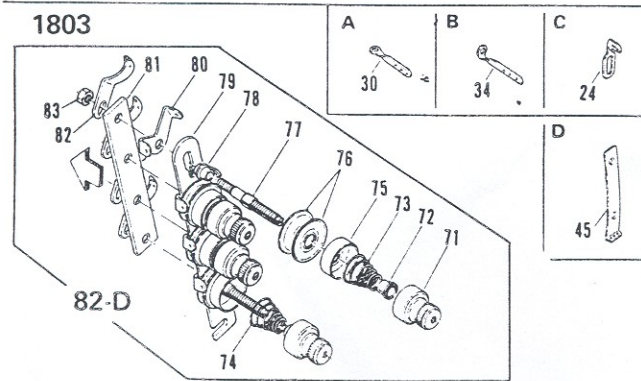
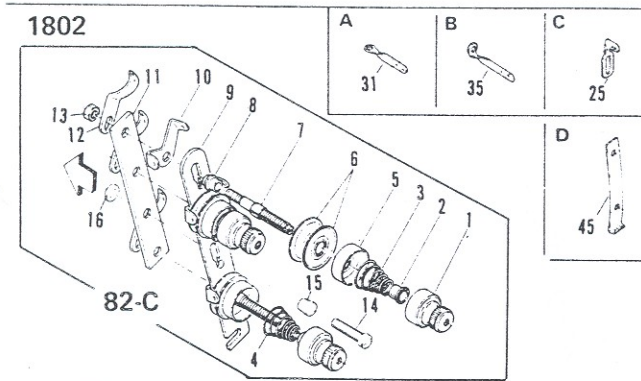
## 2. Thread eyelet components (糸道関係)



82-B

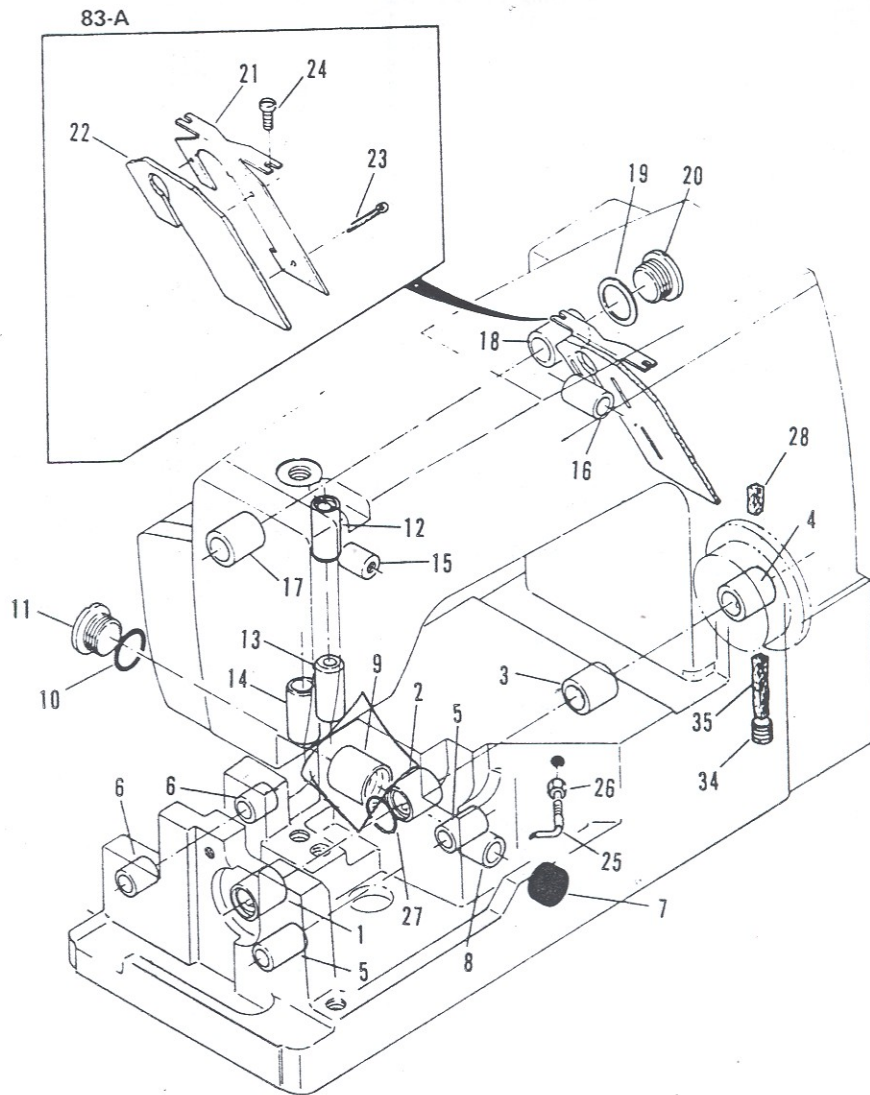


82-A



Ref. No.	Part No.	Part Name	Q'ty	Ref. No.	Part No.	Part Name	Q'ty
1	41-101	Tension regulating nut	3	50	45-917	L' thread eyelet	1
2	41-105	Tension disc ratchet	3	51	85-621	Screw	1
3	41-701	Needle thread tension spring	2	52	45-142	Tension nipper	1
4	41-702	Looper thread tension spring	1	53	41-721	Tension nipper spring	1
5	41-107	Tension disc cover	3	54	84-171	Screw	1
6	41-111	Tension disc	6	55	45-922	Zigzag thread eyelet	1
7	41-172	Tension post	3	56	84-361	Screw	2
8	41-131	Tension post collar A	3	57	43-331	Cast-off support bracket	1
9	41-113	Tension post support	1	58	43-339	Retainer support bracket	1
10	41-115	Tension post thread eyelet	3	59	84-162	Screw	1
11	41-121	Tension post holder	1	60	84-161	Screw	1
12	41-117	Lead in thread eyelet	3	61	43-112	Pin for thread retainer	1
13	86-411	Nut	2	62	43-333	Looper thread retainer	1
14	84-764	Screw	1	63	84-374	Screw	1
15	41-132	Tension post collar B	1	64	43-337	Looper thread guide eyelet	2
16	75-381	Washer	1	65	85-621	Screw	2
* 17	41-416	Looper thread eyelet	2	66	43-335	Looper thread cast-off pin	1
18	84-374	Screw	1	67	84-163	Screw	1
19	84-361	Screw	1	68	71-191	Pin	2
20	47-202	Looper thread guide eyelet B	1	69	75-456	Washer	1
21	84-361	Screw	1	70	84-571	Screw	1
22	85-531	Screw	1	71	41-101	Tension regulating nut	4
23	75-456	Washer	1	72	41-105	Tension disc ratchet	4
24	45-102	Needle thread eyelet 3	1	73	41-701	Needle thread tension spring	3
25	45-101	Needle thread eyelet 2	1	74	41-702	Looper thread tension spring	1
26	45-103	Needle thread eyelet 4	1	75	41-107	Tension disc cover	4
27	84-571	Screw	1	76	41-111	Tension disc	8
28	45-225	Needle thread take-up wire E	1	77	41-172	Tension post	4
29	84-521	Screw	1	78	41-131	Tension post collar A	4
30	45-132	Needle bar thread eyelet 3	1	79	41-113	Tension post support	1
31	45-131	Needle bar thread eyelet 2	1	80	41-115	Tension post thread eyelet	4
32	45-133	Needle bar thread eyelet 4	1	81	41-121	Tension post holder	1
33	84-361	Screw	1	82	41-117	Lead in thread eyelet	4
34	45-122	Needle lever thread eyelet 3	1	83	86-411	Nut	2
35	45-121	Needle lever thread eyelet 2	1	84			
36	45-123	Needle lever thread eyelet 4	1	85	41-101	Tension regulating nut	5
37	84-361	Screw	1	86	41-105	Tension disc ratchet	5
38	45-921	Needle thread tension regulating support	1	87	41-701	Needle thread tension spring	4
39	41-151	Needle thread tension regulating rod	1	88	41-702	Looper thread tension spring	1
40	41-152	Needle thread tension regulating disc	2	89	41-107	Tension disc cover	5
41	41-153	Needle thread tension regulating spring	1	90	41-111	Tension disc	10
42	41-154	Needle thread tension regulating nut	1	91	41-172	Tension post	5
43	84-571	Screw	1	92	41-131	Tension post collar A	5
44	75-453	Washer	1	93	41-113	Tension post support	1
45	45-151	Needle thread guide 3	1	94	41-115	Tension post thread eyelet	5
46	45-163	Needle thread guide 4	1	95	41-123	Tension post holder (large)	1
47	84-464	Screw	2	96	41-117	Lead in thread eyelet	5
48	41-303	Tension nipper plate	1	97	86-411	Nut	3
49	84-364	Screw	1	98			
* 82-A	40-381	Cast-off support plate ass'y					
82-B	40-180	Covering thread tension base ass'y					
* 82-C	40-121	Thread tension ass'y, 1802 Type					
* 82-D	40-131	Thread tension ass'y, 1803 Type					
* 82-E	40-141	Thread tension ass'y, 1804 Type					
82-F	40-571	Tension nipper ass'y					

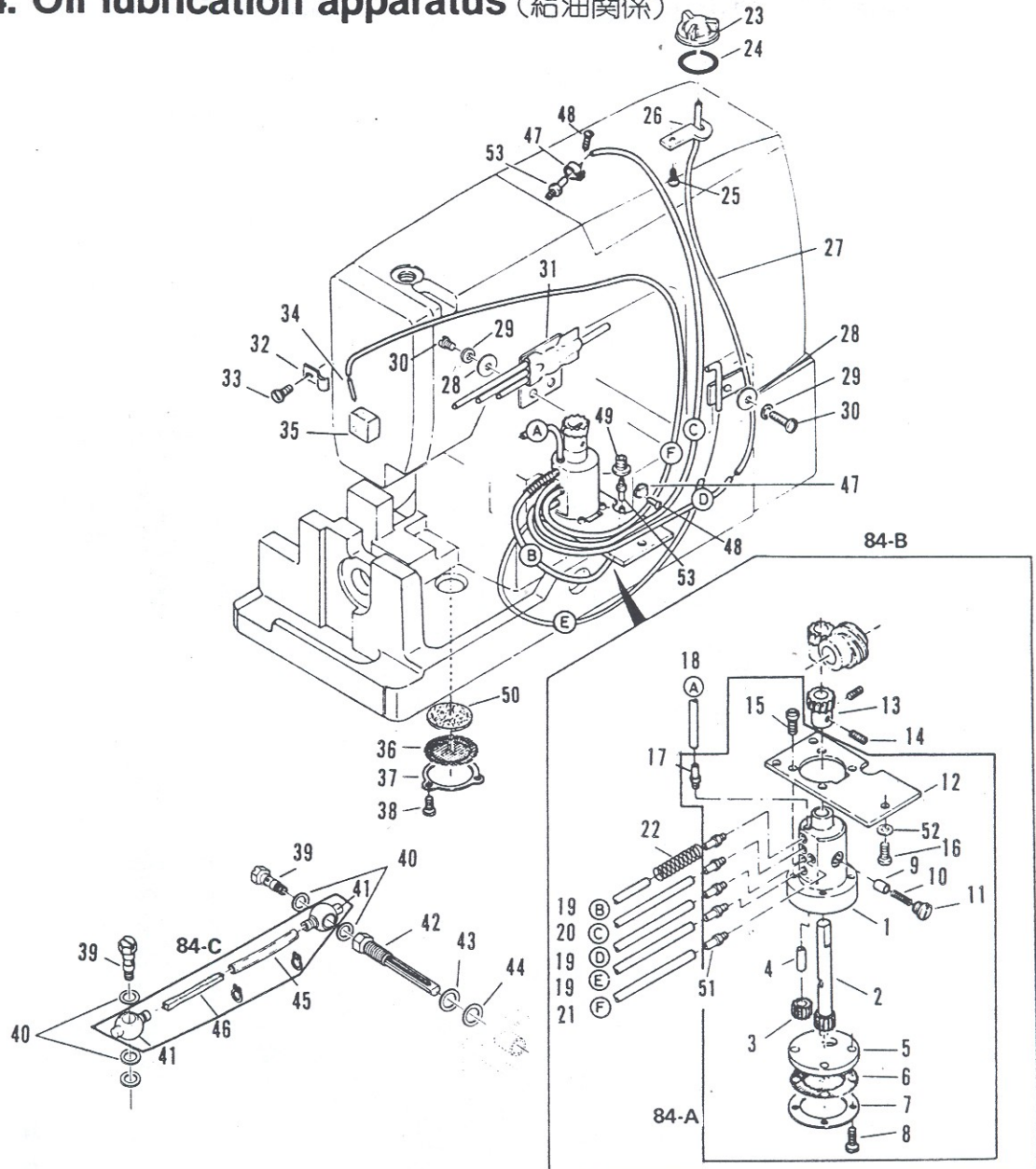
### 3. Bushings (ブッシュ関係)



Ref. No.	Part No.	Part Name	Q'ty	Ref. No.	Part No.	Part Name	Q'ty
1	81-711	Main shaft bushing A . . . . .	1	15	81-201	Bushing for spring set screw . . . . .	1
2	81-702	Main shaft bushing B . . . . .	1	16	81-255	Presser foot lifter lever bushing . . . . .	1
3	81-713	Main shaft bushing C . . . . .	1	17	81-115	Looper drive lever shaft bushing B . . . . .	1
4	81-110	Flange bushing . . . . .	1	18	81-114	Puller driving shaft bushing . . . . .	1
5	81-736	Looper rocker shaft bushing A . . . . .	2	19	23-298	Gasket . . . . .	1
6	81-751	Feed rocker shaft bushing A . . . . .	2	20	87-812	Screw . . . . .	1
7	23-166	Oil plug A . . . . .	1	21	39-122	Fence B . . . . .	1
8	81-136	Looper drive lever shaft bushing B . . . . .	1	22	23-372	Fence felt B . . . . .	1
9	81-137	Looper drive lever shaft bushing C . . . . .	1	23	93-621	Pin . . . . .	3
10	23-195	O-ring . . . . .	1	24	84-164	Screw . . . . .	2
11	87-811	Screw . . . . .	1	25	35-111	Feed rocker eccentric link tubing . . . . .	1
12	81-183	Needle bar bushing C (upper) . . . . .	1	26	86-501	Nut . . . . .	1
13	81-184	Needle bar bushing C (lower) . . . . .	1	27	23-197	O-ring . . . . .	1
14	81-154	Presser bar bushing . . . . .	1	28	23-383	Felt . . . . .	1
83-A	30-941	Fence ass'y					

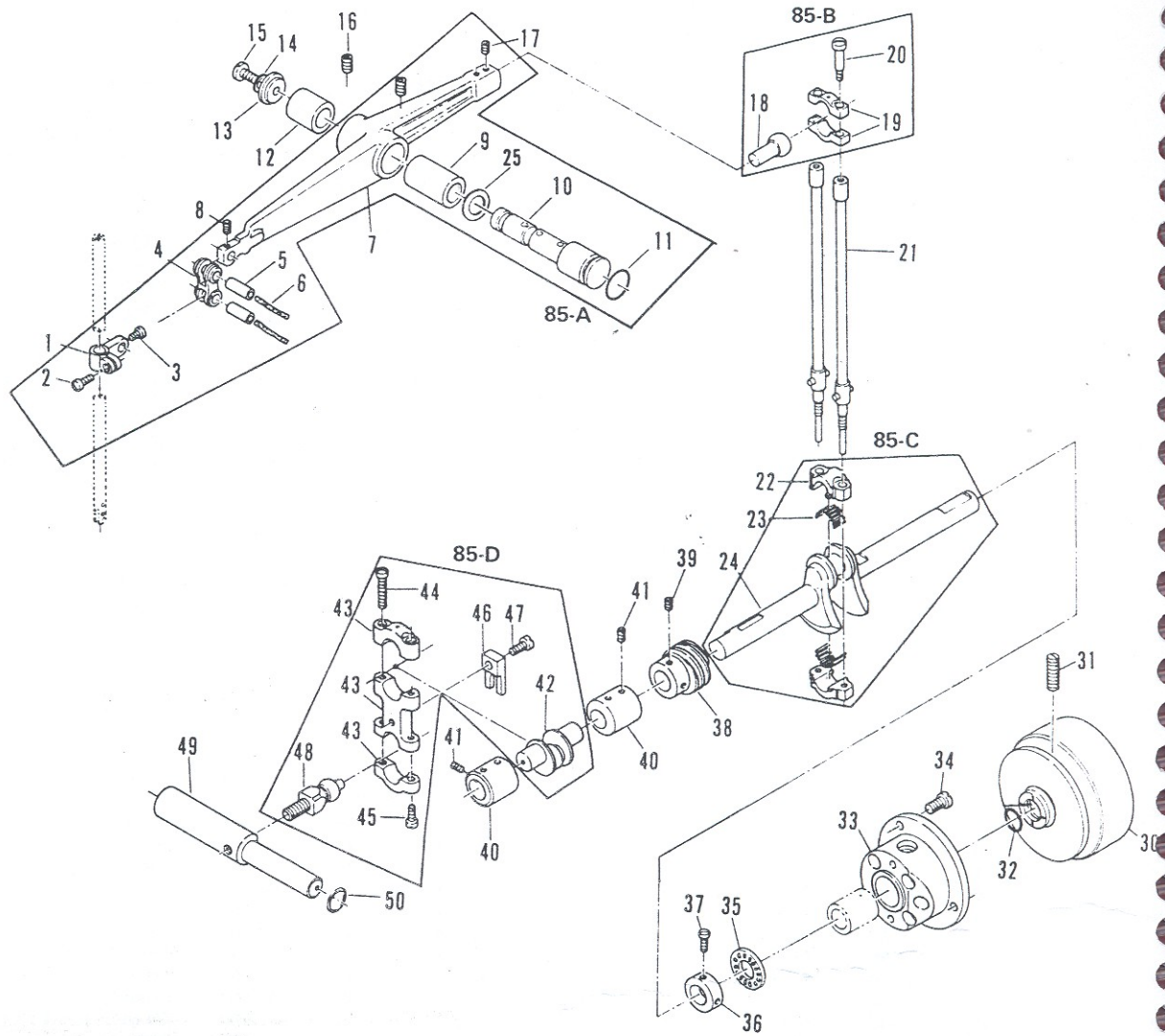


# 4. Oil lubrication apparatus (給油関係)



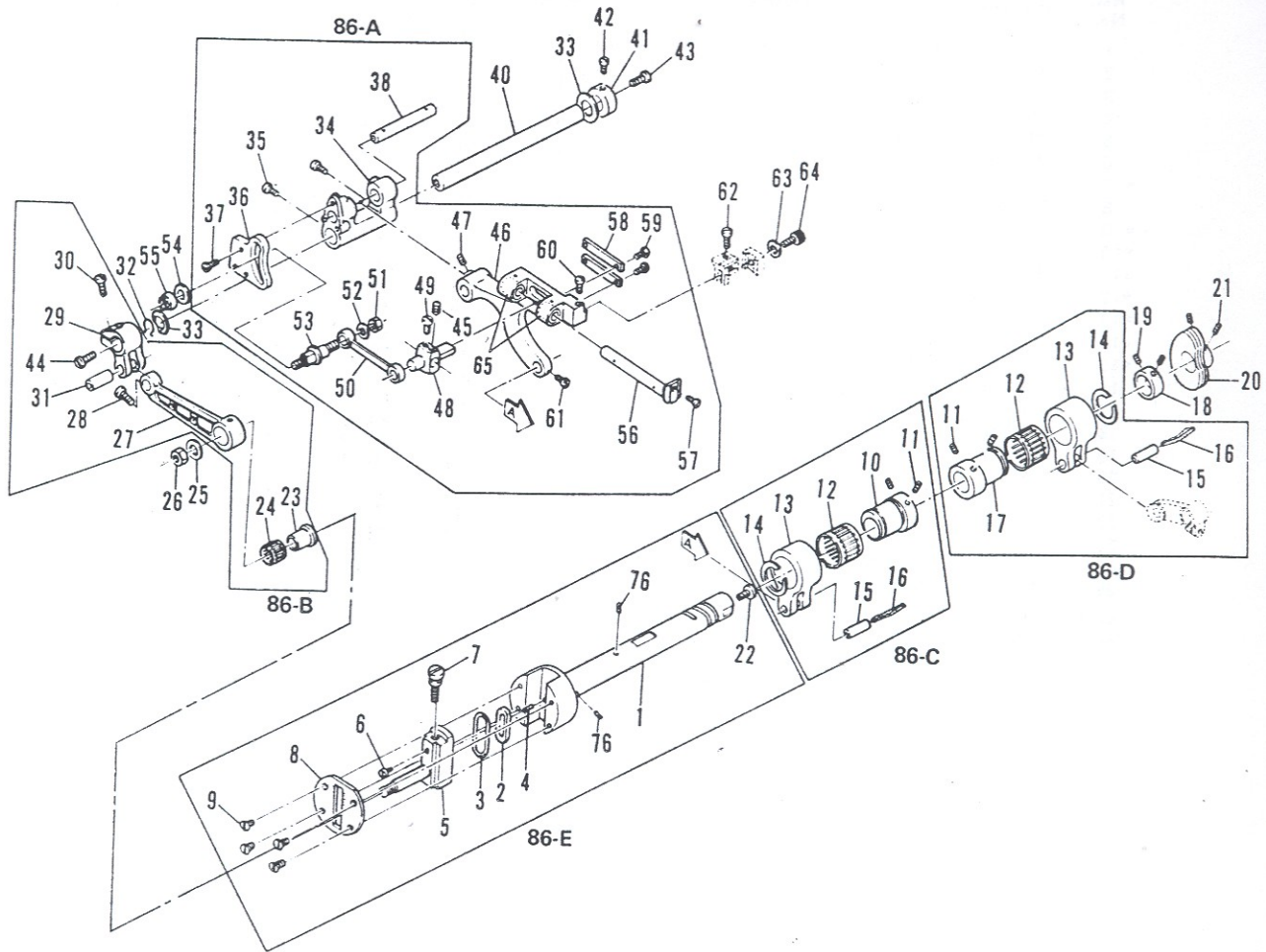
3	31-407	Gear E (support)	1	30	84-363	Screw	3
4	71-482	Pin	1	31	35-121	Pipe	1
5	31-403	Pump body cover	1	32	39-133	Support	1
6	31-404	Pump body mesh	1	33	84-361	Screw	1
7	31-405	Mesh Frame	1	34	35-257	Pipe	1
8	84-571	Screw	4	35	23-368	Felt	1
9	31-305	Pin	1	36	31-310	Mesh	1
10	31-306	Spring	1	37	39-102	Mounting plate	1
11	31-307	Screw	1	38	84-362	Screw	3
12	31-402	Body fixing plate	1	39	35-203	Oil guide screw	2
13	31-409	Gear	1	40	23-306	Packing	4
14	84-521	Screw	2	41	35-305	Tube coupling	2
15	84-566	Screw	4	42	35-201	Oil flow screw	1
16	84-572	Screw	3	43	75-470	Washer	1
17	31-314	Vinyl tube coupling	5	44	23-300	Packing	1
18	35-302	Vinyl pipe (75φ)	1	45	35-207	Vinyl pipe	1
19	35-303	Vinyl pipe (230φ)	3	46	23-393	Felt	1
20	35-304	Vinyl pipe (410φ)	1	47	31-341	Pipe support	2
21	35-322	Vinyl pipe (600φ)	1	48	31-341	Screw	2
22	79-236	Spring	1	49	85-531	Fixing screw	1
23	39-233	Oil pot lid	1	50	39-162	Mesh filter	1
24	39-233	O-ring	1	51	31-364	Vinyl tube coupling	1
25	84-161	Screw	1	52	75-467	Washer	3
26	39-137	Pipe support	1	53	31-314	Vinyl tube coupling	2
27	35-246	Piping	1				
84-A	30-001	Oil pump ass'y					
84-B	30-002	Oil pump ass'y					
84-C	30-500	Feeder holder piping ass'y					

# 5. Needle lever crank (弓・クランク機構)



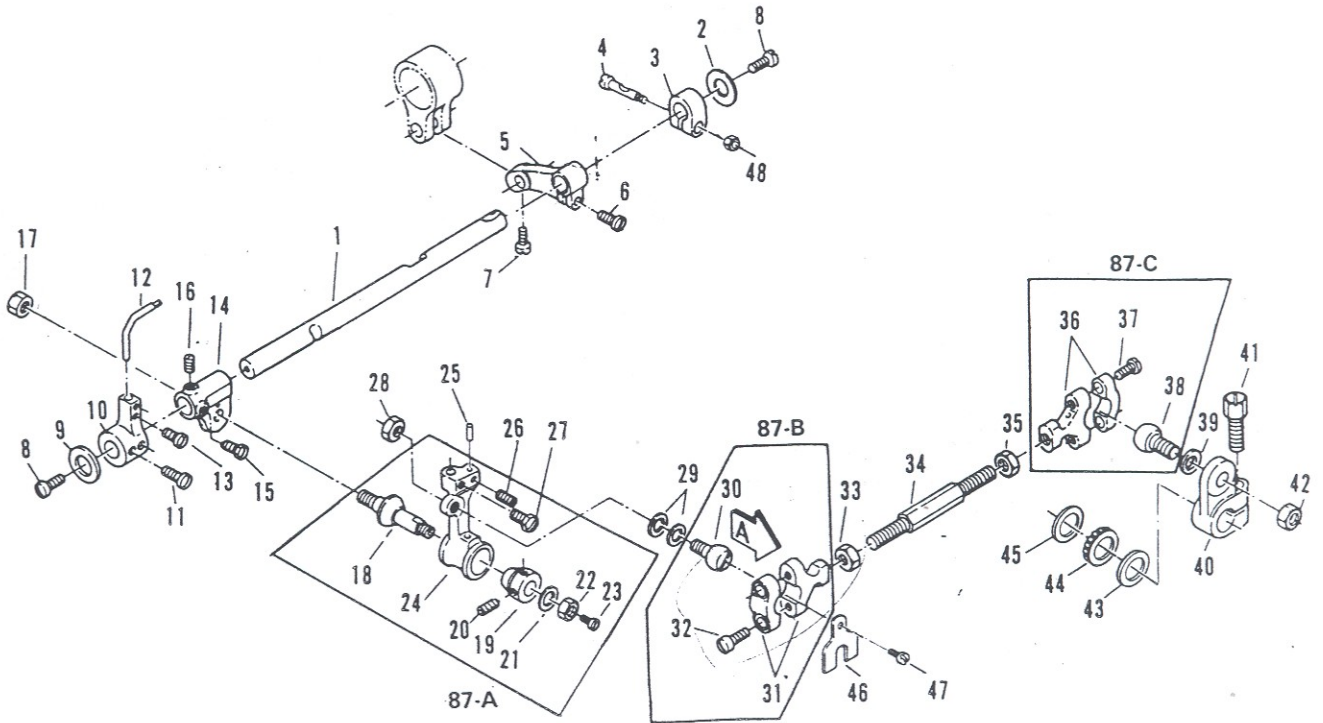
Ref. No.	Part No.	Part Name	Q'ty	Ref. No.	Part No.	Part Name	Q'ty
1	73-113	Needle bar connection	1	26			
2	84-572	Screw	1	27			
3	84-365	Screw	1	28			
4	66-111	Needle bar connecting link	1	29			
5	71-432	Needle bar connecting pin	2	30	69-208	Pulley	1
6	23-341	Felt	2	31	85-114	Screw	2
* 7	69-105	Needle lever	1	32	23-197	O-ring	1
8	84-366	Screw	1	33	69-305	Flange E	1
* 9	81-113	Needle lever bushing	1	34	84-566	Screw	3
*10	71-933	Needle lever stud	1	35	92-231	Bearing	1
*11	23-195	O-ring	1	36	75-112	Crank shaft collar	1
*12	81-412	Needle lever stud bushing	1	37	84-761	Screw	2
*13	39-107	Oil seal plate	1	38	31-410	Worm wheel	1
*14	23-260	Gasket	1	39	84-718	Screw	2
*15	85-182	Screw	1	40	75-101	Joint collar	2
16	85-114	Screw	2	41	85-113	Screw	12
17	85-212	Screw	2	42	71-870	Crank shaft C small	1
18	61-722	Needle lever connecting rod	1	43	63-512	Looper driving lever ball joint B	1
19	63-721	Ball joint	1	44	84-568	Screw	2
20	84-586	Screw	2	45	84-567	Screw	2
21	65-311	Connecting bar	2	46	69-121	Eccentric guide fork	1
22	63-331	Ball joint	1	47	84-591	Screw	1
23	91-011	Needle bearing	28	48	61-713	Looper driving lever connecting rod	1
*24	71-874	Crank shaft 7M	1	49	71-612	Looper driving shaft	1
25	75-332	Washer	1	50	75-232	Washer	1
85-A	60-971	Needle lever ass'y					
85-B	60-340	Needle bar connection ass'y					
85-C	70-037	Crank shaft 7M ass'y					
85-D	60-375	Looper driving ball joint ass'y					

## 6. Feed rocker (送り機構)



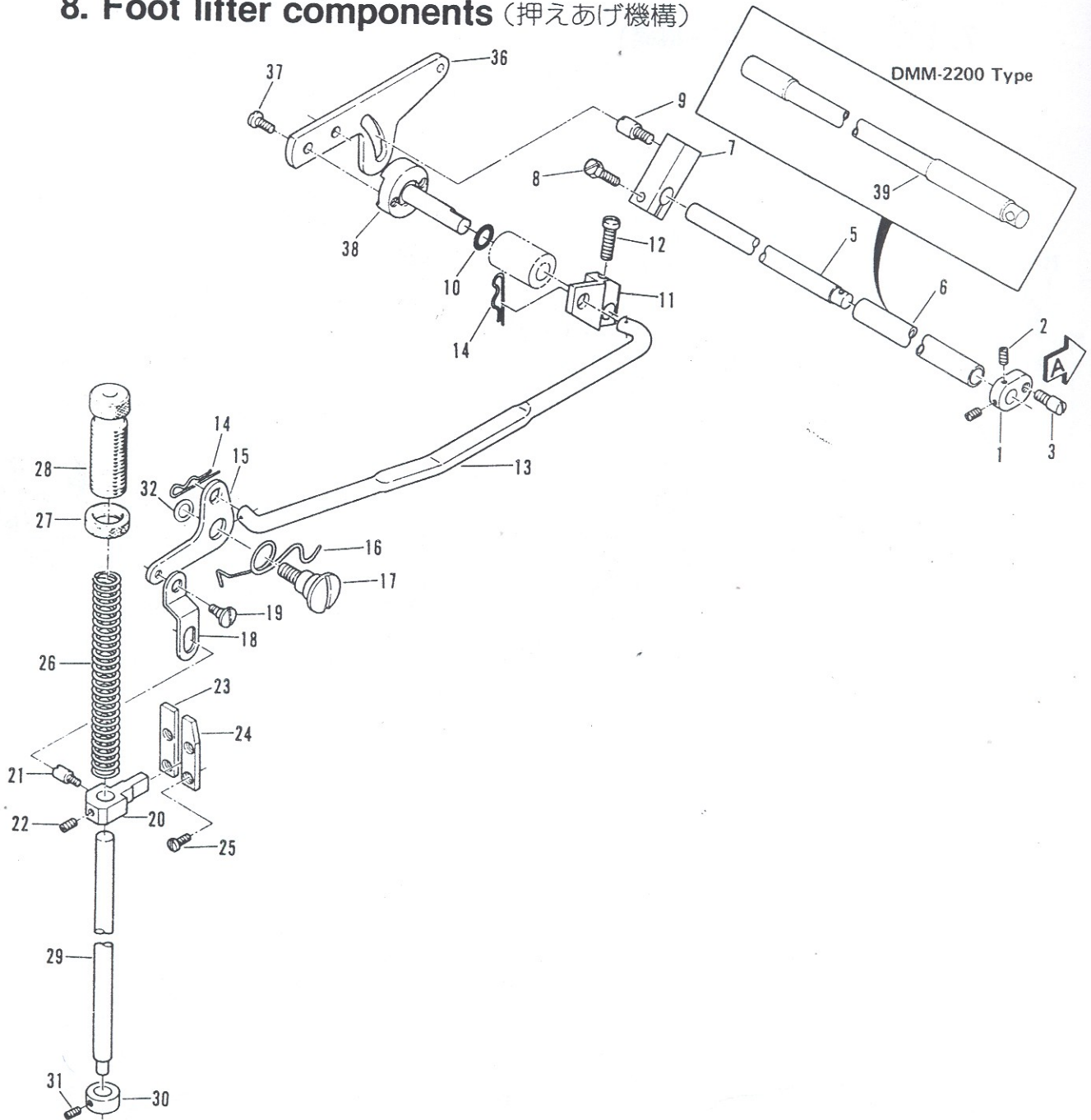
Ref. No.	Part No.	Part Name	Q'ty	Ref. No.	Part No.	Part Name	Q'ty
* 1	71-874	Main shaft 8A	1	33	75-372	Washer	2
2	51-036	Stitch regulating stud cup	1	* 34	51-102	Differential feed rocker	1
3	23-197	O-ring	1	35	84-571	Screw	2
4	23-393	Felt	1	* 36	51-105	Feed rocker segment shot plate	1
5	51-013	Feed crank adjusting post	1	37	84-363	Screw	3
6	85-624	Screw	1	* 38	71-531	Shaft	1
7	84-383	Screw	1	39			
8	51-031	Main shaft plate	1	* 40	71-647	Feed rocker arm shaft	1
9	84-661	Screw	1	41	75-132	Collar	1
* 10	61-322	Feed eccentric 0.9	4	42	84-761	Screw	1
11	84-715	Screw	4	43	84-574	Screw	1
12	91-406	Bearing	2	44	84-576	Screw	1
13	63-232	Eccentric link	2	45	84-312	Screw	1
14	93-406	Snap ring	2	* 46	51-103	Main differential feed	1
15	71-431	Eccentric link pin	2	47	84-512	Screw	1
16	23-341	Felt	2	* 48	51-109	Differential feed bar guide	1
* 17	61-312	Looper avoid eccentric 0.8	1	49	84-379	Screw	2
18	75-114	Collar	1	* 50	66-506	Feed crank link	1
19	84-511	Screw	2	51	86-311	Nut	1
20	49-133	Looper thread double disc take up	1	52	75-458	Washer	1
21	84-711	Screw	2	* 53	51-113	Crank set pin	1
22	84-576	Screw	1	54	75-458	Washer	1
23	75-243	Feed crank link collar	1	55	86-411	Nut	1
24	91-271	Bearing	1	* 56	51-120	Front feed dog holder bracket	1
25	75-453	Washer	1	57	84-363	Screw	1
26	86-412	Nut	1	* 58	51-111	Differential feed bar guide	2
* 27	67-312	Feed rocker arm	1	* 59	84-164	Screw	4
28	84-366	Screw	1	60	84-462	Screw	1
* 29	63-352	Feed rocker link	1	61	84-366	Screw	1
30	84-814	Screw	1	* 62	84-162	Screw	2
31	71-431	Feed rocker link pin	1	63	75-455	Washer	1
* 32	93-261	Snap link	1	64	84-614	Screw	1
* 86-A	50-131	Feed rocker ass'y	1	65	81-141	Bushing	2
* 86-B	60-720	Feed rocker arm ass'y					
* 86-C	60-090	Feed eccentric link ass'y					
86-D	60-780	Looper avoid eccentric link ass'y					
* 86-E	70-181	Main shaft 8A					

# 7. Looper (ルーパー機構)



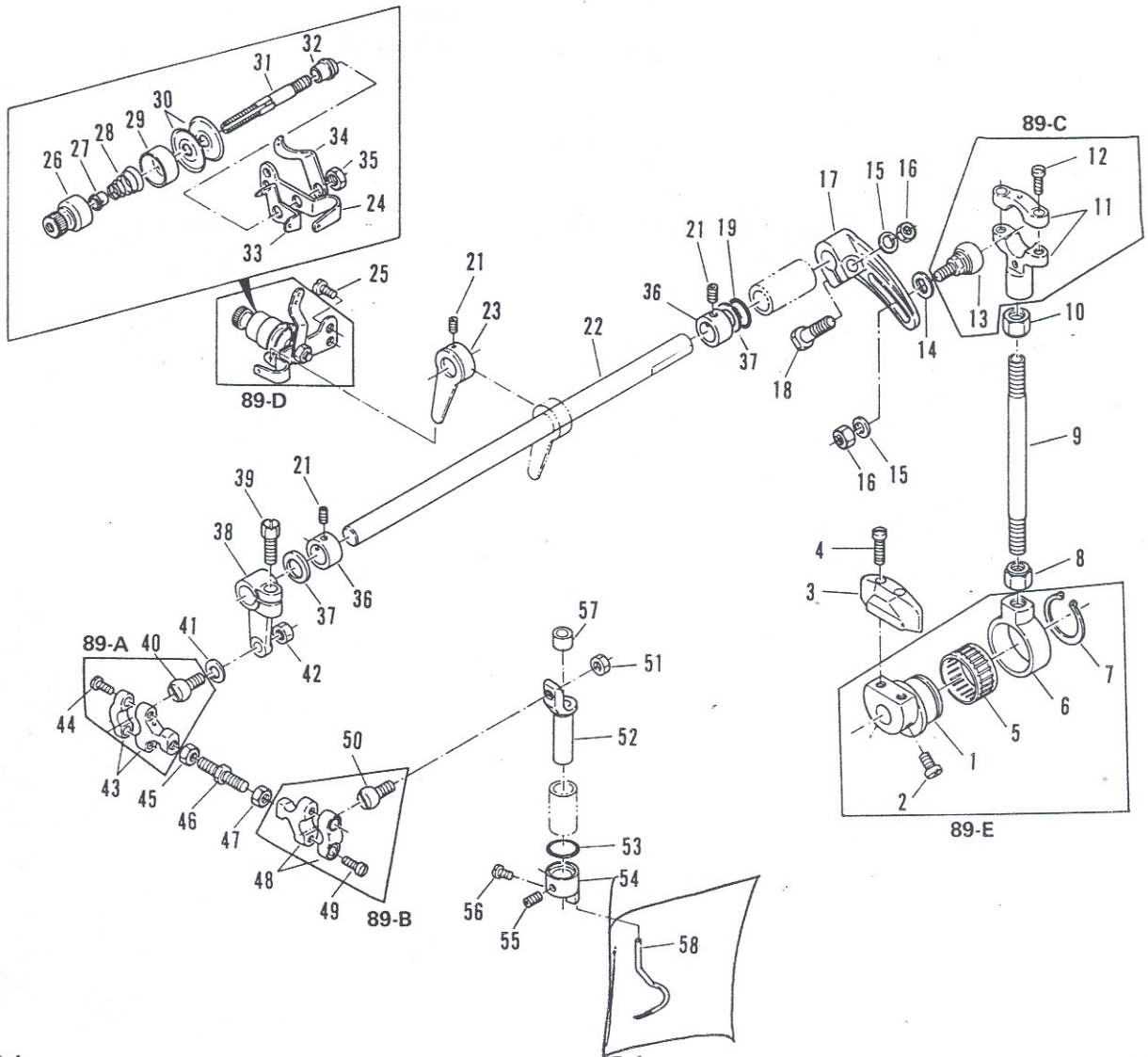
Ref. No.	Part No.	Part Name	Q'ty	Ref. No.	Part No.	Part Name	Q'ty
1	71-561	Looper holder shaft	1	25	71-216	Adjust pin	1
2	75-371	Washer	1	26	84-161	Screw	1
3	75-139	Looper holder shaft collar	1	27	84-616	Screw	1
4	71-454	Screw	1	28	86-413	Nut	1
5	67-132	Looper avoid lever	1	29	75-453	Washer	2
6	84-612	Screw	1	30	61-823	Connecting ball	1
7	84-366	Screw	1	31	63-812	Connecting rod	1
8	84-761	Screw	2	32	84-572	Screw	2
9	75-371	Washer	1	33	86-412	Nut (left)	1
10	18-722	Needle bar guide bracket	1	* 34	65-435	Connecting bar	1
11	84-616	Screw	2	35	86-411	Nut	1
12	18-721	Needle bar guide	1	* 36	63-811	Connecting rod	1
13	84-162	Screw	2	37	84-572	Screw	2
14	19-303	Looper rocker	1	38	61-823	Connecting ball	1
15	84-767	Screw	1	39	75-401	Washer	1
16	84-766	Screw	1	* 40	67-225	Looper driving lever E	1
17	86-502	Nut	1	41	85-211	Screw	1
18	71-901	Looper rocker tapered pin	1	42	86-411	Nut	1
19	81-401	Tapered pin bushing	1	43	75-331	Washer	1
20	84-521	Screw	2	44	92-231	Bearing	1
21	75-452	Washer	1	45	75-327	Washer	1
22	86-501	Nut	1	46	35-199	Oil guide	1
23	84-361	Screw	1	47	84-164	Screw	1
* 24	19-315	Looper holder C	1	48	86-314	Nut	1
* 87-A	10-915	Looper holder E ass'y					
* 87-B	60-382	Looper connecting link ass'y					
87-C	60-381	Looper connecting link, right ass'y					

## 8. Foot lifter components (押えあげ機構)



Ref. No.	Part No.	Part Name	Q'ty	Ref. No.	Part No.	Part Name	Q'ty
1	77-101	Lifter lever connecting	1	21	84-561	Screw	1
2	84-512	Screw	2	22	84-521	Screw	1
3	84-562	Screw	1	23	77-135	Presser bar connecting guide left	1
4				24	77-136	Presser bar connecting guide right	1
5	77-111	Foot lifter crankshaft B	1	25	84-362	Screw	4
6	77-121	Crankshaft pipe	1	26	79-121	Presser bar spring	1
7	77-103	Adjusting post supporter	1	27	86-851	Nut	1
8	84-812	Screw	1	28	85-762	Presser bar screw	1
9	84-561	Screw	1	29	71-542	Presser bar	1
10	23-189	O-ring	1	30	75-154	Collar	1
11	77-107	Presser foot lifter connecting plate	1	31	84-511	Screw	1
12	84-764	Screw	1	32	75-453	Washer	1
13	77-116	Lifter lever connecting bar	1	33			
14	93-611	Snap pin A	2	34			
15	77-109	Lifter lever spring supporter	1	35			
16	79-222	Lifter lever spring	1	36	77-143	Presser foot lifter lever	1
17	84-781	Screw	1	37	84-566	Screw	2
18	77-131	Lifter lever link	1	38	77-114	Presser foot lifter lever post	1
19	84-581	Screw	1	39	77-113	Foot lifter shaft	1
20	77-133	Presser bar guide	1	40			

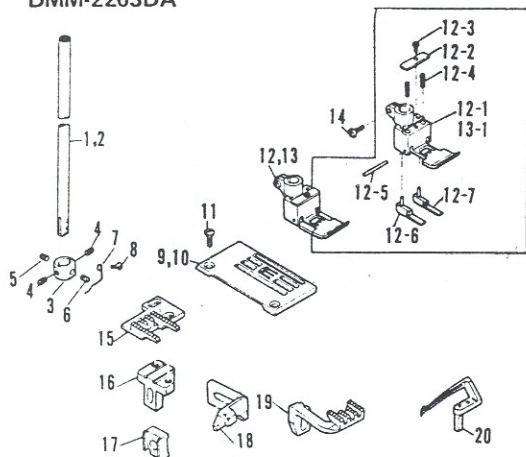
# 9. Upper shaft components (上飾り機構)



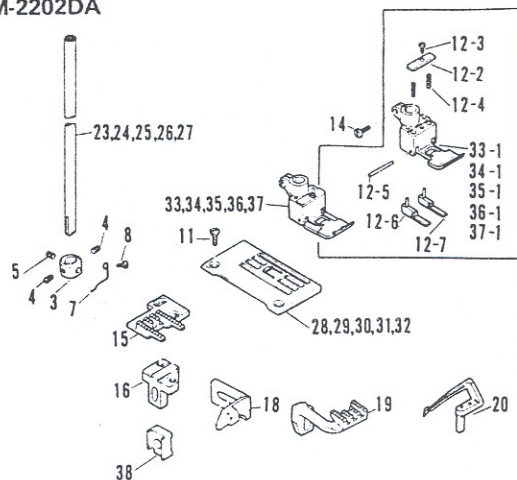
Ref. No.	Part No.	Part Name	Q'ty	Ref. No.	Part No.	Part Name	Q'ty
* 1	61-201	Puller driving eccentric	1	* 30	41-111	Tension disc	2
2	84-762	Screw	2	* 31	41-172	Tension rod	1
* 3	69-241	Balance, large	1	* 32	41-131	Collar A	1
4	84-568	Screw	2	* 33	41-115	Thread eyelet, upper	1
5	91-156	Upper shaft bearing	1	* 34	41-117	Thread eyelet, lower	1
6	63-201	Upper shaft connecting link	1	* 35	86-411	Nut	1
* 7	93-251	25φ snap ring	1	36	75-113	Collar	1
8	86-741	Nut	1	37	75-332	Washer	2
* 9	65-302	Upper shaft connecting rod	1	38	67-251	Covering lever	1
10	86-742	Nut, left	1	39	85-211	Screw	1
11	63-711	Connecting ball joint, small	1	40	61-823	Connecting rod	1
12	84-567	Screw	2	41	75-403	Washer	1
13	61-714	Connecting rod	1	42	86-411	Nut	1
14	75-491	Washer	1	43	63-818	Connecting ball joint	1
15	75-381	Washer	2	44	84-572	Screw	2
16	86-501	Nut	2	45	86-412	Nut	1
17	67-172	Lever, rear	1	46	65-402	Connecting rod, S	1
18	55-061	Screw	1	47	86-411	Nut	1
19	23-200	O-ring	1	48	63-816	Covering thread ball joint	1
20				49	84-572	Screw	2
21	84-718	Screw	4	50	61-806	Connecting rod	1
22	71-692	Upper shaft	1	51	86-413	Nut	1
* 23	45-911	Covering thread guide	1	52	04-206	Covering base	1
* 24	45-913	Covering thread guide eyelet	1	53	23-200	O-ring	1
25	84-571	Screw	2	54	04-211	Covering holder	1
* 26	41-101	Small case	1	55	84-521	Screw	2
* 27	41-105	Ratchet	1	56	84-361	Screw	2
* 28	41-702	Spring	1	57	94-231	8.1φ shaft seal	1
* 29	41-107	L, Case	1	* 58	19-806	Covering loop	1
89-A	60-382	Connecting ball joint ass'y					
89-B	60-381	Covering thread ball joint ass'y					
89-C	60-374	Puller driving ball joint ass'y					
* 89-D	40-181	Covering tension base ass'y					
* 89-E	60-150	Upper shaft driving eccentric ass'y					

# 10. Gauge parts (1) (ゲージ関係(1))

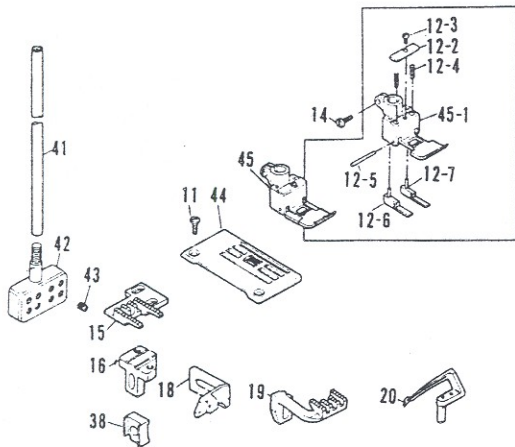
DWK-1803D  
DMM-2203DA



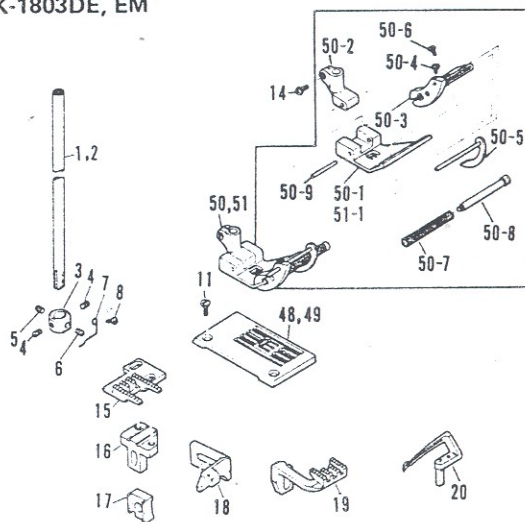
DWK-1802D  
DMM-2202DA



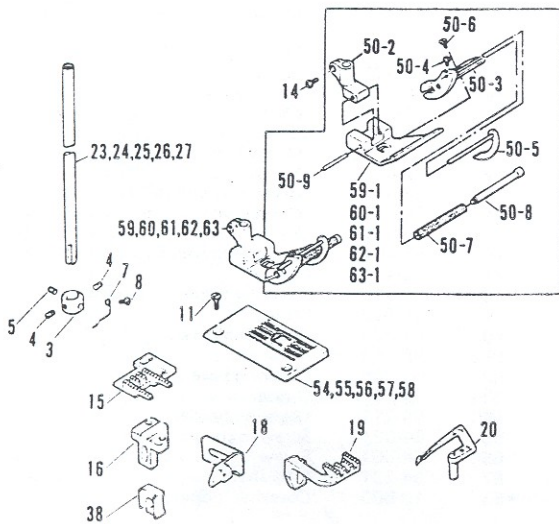
DWK-1804D



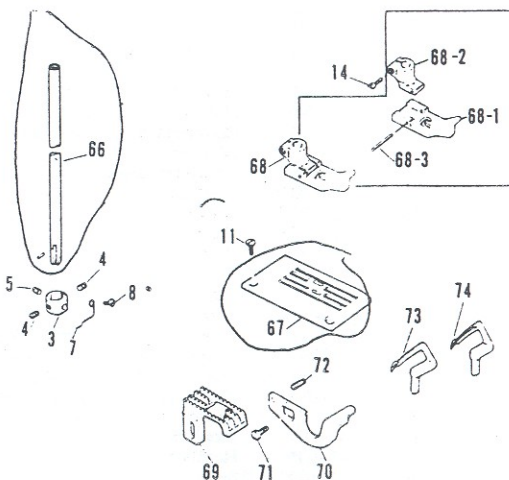
DWK-1803DE, EM



DWK-1802DE, EM



DWK-1842 1/4



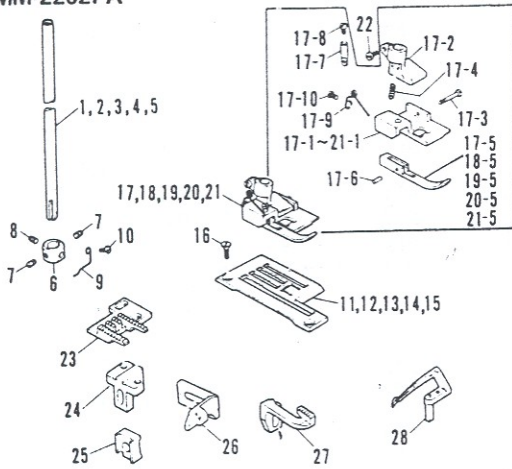
1702 Pmd



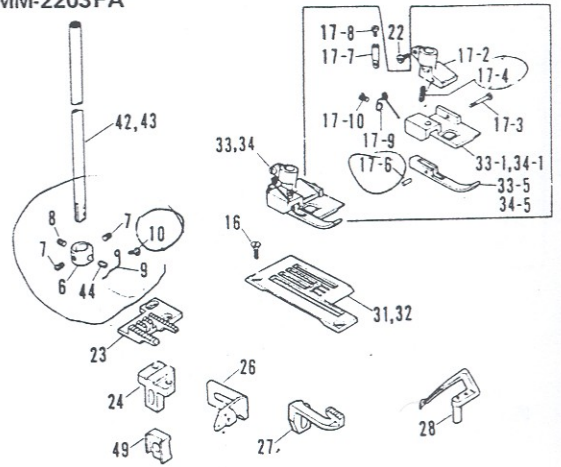
Ref. No.	Part No.	Part Name	Q'ty	Ref. No.	Part No.	Part Name	Q'ty
1	11-735	Needle bar 7/32"	1	41	11-704	Needle bar	1
2	11-736	Needle bar 1/4"	1	42	12-893	Needle clamp	1
3	12-702	Needle clamp	1	43	84-111	Screw	4
4	84-511	Screw	2	44	14-893	Throat plate 6mm	1
5	84-513	Screw	1	45	17-893	Presser foot 6mm	1 set
6	84-168	Screw	1	45-1	17-893-1	Presser foot, bottom	1
7	45-232	Needle thread guide	1	46			
8	84-163	Screw	1	47			
9	14-854	Throat plate 7/32"	1	48	14-855	Throat plate 7/32"	1
10	14-864	Throat plate 1/4"	1	49	14-865	Throat plate 1/4"	1
11	84-464	Screw	2	50	17-885	Presser foot 7/32"	1 set
12	17-884	Presser foot 7/32"	1 set	50-1	17-885-2	Presser foot, bottom	1
12-1	17-884-1	Presser foot, bottom	1	50-2	17-785-1	Presser foot, shank	1
12-2	17-784-4	Spring plate	1	50-3	17-785-3	Guide	1
12-3	85-623	Screw	1	50-4	84-364	Screw	1
12-4	17-784-5	Spring	1	50-5	17-785-4	Slide guide	1
12-5	17-784-3	Pin	1	50-6	85-611	Screw	1
12-6	17-784-2	Feed section guide (left)	1	50-7	17-785-6	Roller	1
12-7	17-784-2	Feed section guide (right)	1	50-8	17-785-5	Roller shaft	1
13	17-894	Presser foot 1/4"	1 set	50-9		Pin	1
13-1	17-894-1	Presser foot, bottom	1	51	17-895	Presser foot 1/4"	1 set
14	84-382	Screw	1	51-1	17-895-2	Presser foot, bottom	1
15	15-753	Rear feed dog	1	52			
16	51-118	Rear feed dog holder A	1	53			
17	18-709	Needle guard holder	1	54	14-725	Throat plate 1/8"	1
18	18-707	Needle guard	1	55	14-735	Throat plate 5/32"	1
19	15-723	Front feed dog	1	56	14-745	Throat plate 3/16"	1
20	19-713	Looper	1	57	14-755	Throat plate 7/32"	1
21				58	14-765	Throat plate 1/4"	1
22				59	17-825	Presser foot 1/8"	1
23	11-722	Needle bar 1/8"	1	59-1	17-825-2	Presser foot, bottom	1
24	11-723	Needle bar 5/32"	1	60	17-835	Presser foot 5/32"	1
25	11-724	Needle bar 3/16"	1	60-1	17-835-2	Presser foot, bottom	1
26	11-725	Needle bar 7/32"	1	61	17-845	Presser foot 3/16"	1
27	11-726	Needle bar 1/4"	1	61-1	17-845-2	Presser foot, bottom	1
28	14-724	Throat plate 1/8"	1	62	17-855	Presser foot 7/32"	1
29	14-734	Throat plate 5/32"	1	62-1	17-855-2	Presser foot, bottom	1
30	14-744	Throat plate 3/16"	1	63	17-865	Presser foot 1/4"	1
31	14-754	Throat plate 7/32"	1	63-1	17-865-2	Presser foot, bottom	1
32	14-764	Throat plate 1/4"	1	64			
33	17-824	Presser foot 1/8"	1 set	65			
33-1	17-824-1	Presser foot, bottom	1	66	11-875	Needle bar 1/4"	1
34	17-834	Presser foot 5/32"	1 set	67	14-815	Throat plate 1/4"	1
34-1	17-834-1	Presser foot, bottom	1	68	17-875	Presser foot 1/4"	1
35	17-844	Presser foot 3/16"	1 set	68-1	17-875-2	Presser foot, bottom	1
35-1	17-844-1	Presser foot, bottom	1	68-2	17-785-1	Presser foot, shank	1
36	17-854	Presser foot 7/32"	1 set	68-3	17-512-3	Pin	1
36-1	17-854-1	Presser foot, bottom	1	69	15-815	Feed dog	1
37	17-864	Presser foot 1/4"	1 set	70	18-875	Needle guard	1
37-1	17-864-1	Presser foot, bottom	1	71	84-368	Screw	1
38	18-708	Needle guard holder	1	72	84-113	Screw	1
39				73	19-875	Looper front	1
40				74	19-518	Looper rear	1

# 11. Gauge parts (2) (ゲージ関係(2))

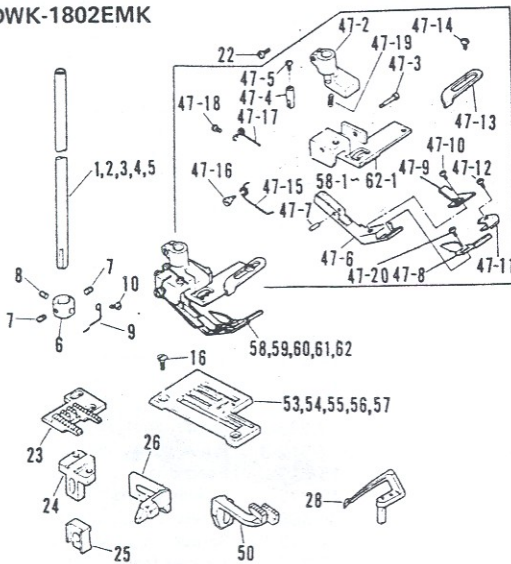
DWK-1802F  
DMM-2202FA



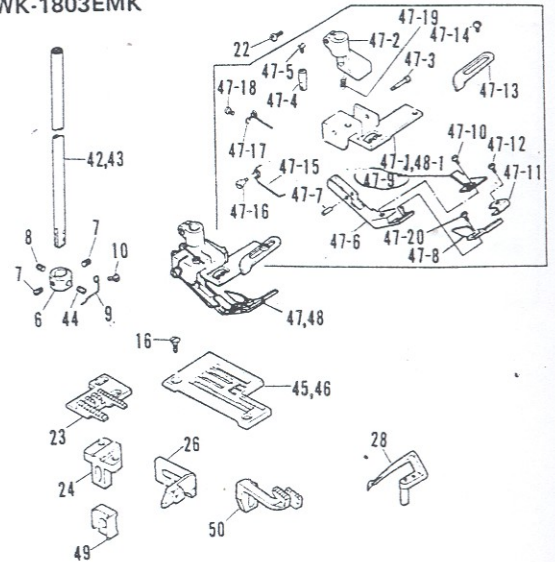
DWK-1803F  
DMM-2203FA



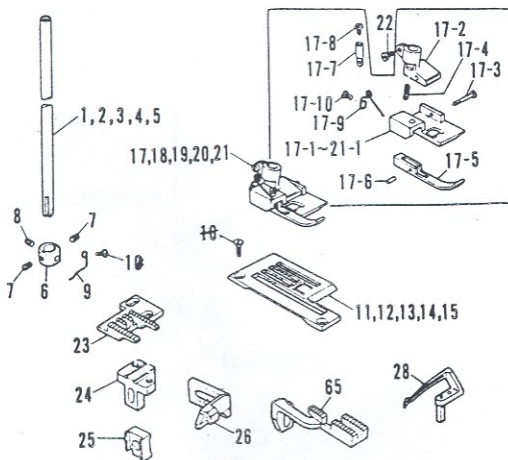
DWK-1802EMK



DWK-1803EMK



DWK-1802FK

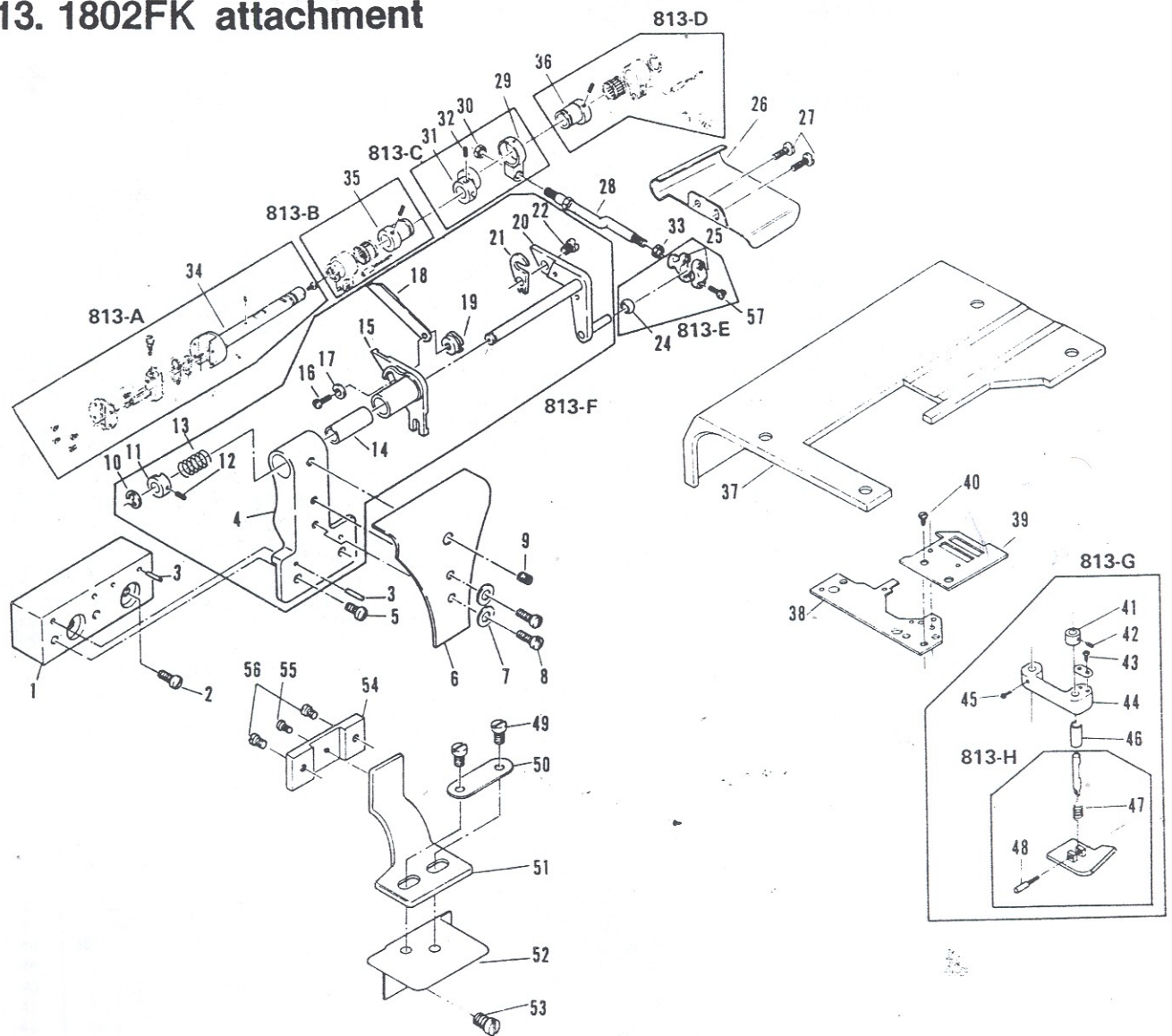


Ref. No.	Part No.	Part Name	Q'ty	Ref. No.	Part No.	Part Name	Q'ty
1	11-722	Needle bar 1/8"	1	36			
2	11-723	Needle bar 5/32"	1	37			
3	11-724	Needle bar 3/16"	1	38			
4	11-725	Needle bar 7/32"	1	39			
5	11-726	Needle bar 1/4"	1	40			
6	12-702	Needle clamp	1	41			
7	84-511	Screw	2	42	11-735	Needle bar 7/32"	1
8	84-513	Screw	1	43	11-736	Needle bar 1/4"	1
9	45-232	Needle thread guide	1	44	84-168	Screw	1
10	84-163	Screw	1	45	14-858	Throat plate 7/32"	1
11	14-726	Throat plate 1/8"	1	46	14-868	Throat plate 1/4"	1
12	14-736	Throat plate 5/32"	1	47	17-888	Presser foot 7/32"	1
13	14-746	Throat plate 3/16"	1	47-1	17-888-2	Presser foot, bottom	1
14	14-756	Throat plate 7/32"	1	47-2	17-786-1	Presser foot, shank	1
15	14-766	Throat plate 1/4"	1	47-3	17-786-4	Hinge screw	1
16	84-464	Screw	1	47-4	17-786-5	Yielding section pin	1
17	17-826	Presser foot 1/8"	1	47-5	85-621	Screw	1
17-1	17-826-2	Presser foot, bottom	1	47-6	17-728-4	Yielding section	1
17-2	17-726-1	Presser foot, shank	1	47-7		Pin	1
17-3	17-726-4	Hinge screw	1	47-8	17-728-6	Slide guide	1
17-4	17-726-7	Spring	1	47-9	17-728-7	Guide	1
17-5	17-726-3	Yielding section	1	47-10	84-161	Screw	1
17-6		Pin	1	47-11	17-728-10	Tape section	1
17-7	17-726-5	Yielding section pin	1	47-12	85-611	Screw	1
17-8	85-621	Screw	1	47-13	17-728-11	Guide plate	1
17-9	17-728-8	Spring	1	47-14	84-161	Screw	1
17-10	84-161	Screw	1	47-15	17-728-9	Spring	1
18	17-836	Presser foot 5/32"	1	47-16	84-171	Screw	1
18-1	17-836-2	Presser foot, bottom	1	47-17	17-728-6	Spring	1
18-5	17-736-3	Yielding section	1	47-18	84-161	Screw	1
19	17-846	Presser foot 3/16"	1	47-19	17-726-7	Spring	1
19-1	17-846-2	Presser foot, bottom	1	47-20	84-364	Screw	1
19-5	17-746-3	Yielding section	1	48	17-898	Presser foot 1/4"	1
20	17-856	Presser foot 7/32"	1	48-1	17-898-2	Presser foot, bottom	1
20-1	17-856-2	Presser foot, bottom	1	49	18-709	Needle guard holder	1
20-5	17-756-3	Yielding section	1	50	15-728	Front feed dog	1
21	17-866	Presser foot 1/4"	1	51			
21-1	17-866-2	Presser foot, bottom	1	52			
21-5	17-766-3	Yielding section	1	53	14-728	Throat plate 1/8"	1
22	84-382	Screw	1	54	14-738	Throat plate 5/32"	1
23	15-756	Rear feed dog	1	55	14-748	Throat plate 3/16"	1
24	51-117	Rear feed dog holder	1	56	14-758	Throat plate 7/32"	1
25	18-708	Needle guard holder	1	57	14-768	Throat plate 1/4"	1
26	18-707	Needle guard	1	58	17-828	Presser foot 1/8"	1
27	15-726	Front feed dog	1	58-1	17-828-2	Presser foot, bottom	1
28	19-713	Looper	1	59	17-838	Presser foot 5/32"	1
29				59-1	17-838-2	Presser foot, bottom	1
30				60	17-848	Presser foot 3/16"	1
31	14-856	Throat plate 7/32"	1	60-1	17-848-2	Presser foot, bottom	1
32	14-866	Throat plate 1/4"	1	61	17-858	Presser foot 7/32"	1
33	17-886	Presser foot 7/32"	1	61-1	17-858-2	Presser foot, bottom	1
33-1	17-886-2	Presser foot, bottom	1	62	17-868	Presser foot 1/4"	1
33-5	17-766-3	Yielding section	1	62-1	17-868-2	Presser foot, bottom	1
34	17-896	Presser foot 1/4"	1	63			
34-1	17-896-2	Presser foot, bottom	1	64			
35				65	07-116	Front feed dog	1

## 12. Gauge lists (ゲージ表)

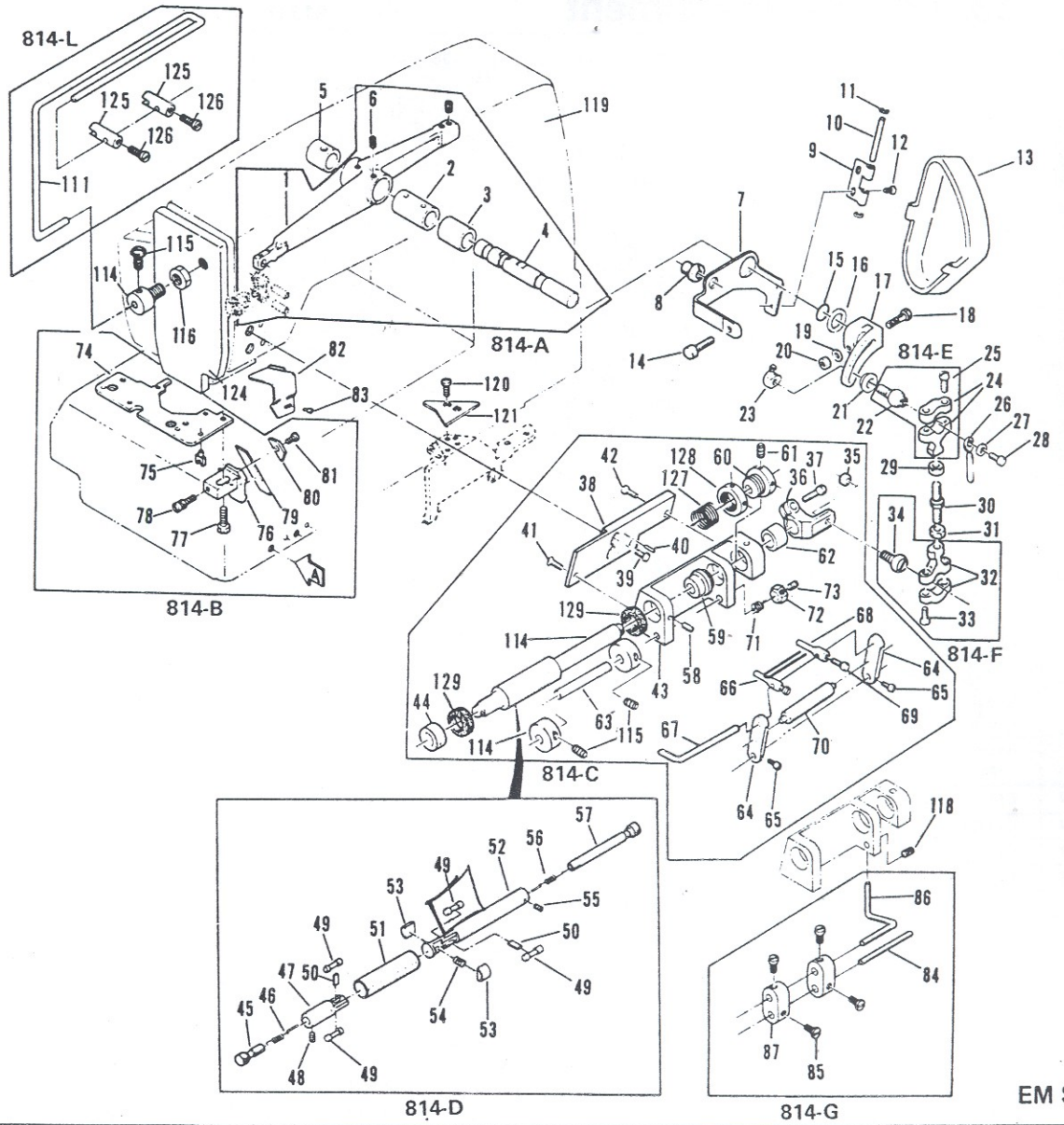
No.	Model	Needle bar	Needle holder	Needle plate	Feed dog (front)	Feed dog (rear)	Presser foot	Looper	Needle guard
1	1803D 7/32"	11-735	12-702	14-854	15-723	15-753	17-884	19-713	18-707
2	1/4"	11-736	12-702	14-864	15-723	15-753	17-894	19-713	18-707
3	1802D 1/8"	11-722	12-702	14-724	15-723	15-753	17-824	19-713	18-707
4	5/32"	11-723	12-702	14-734	15-723	15-753	17-834	19-713	18-707
5	3/16"	11-724	12-702	14-744	15-723	15-753	17-844	19-713	18-707
6	7/32"	11-725	12-702	14-754	15-723	15-753	17-854	19-713	18-707
7	1/4"	11-726	12-702	14-764	15-723	15-753	17-864	19-713	18-707
8	1804D 15/64"	11-704	12-893	14-893	15-723	15-753	17-893	19-713	18-707
9	1803DE 7/32"	11-735	12-702	14-855	15-723	15-753	17-885	19-713	18-707
10	1/4"	11-736	12-702	14-865	15-723	15-753	17-895	19-713	18-707
11	1802DE 1/8"	11-722	12-702	14-725	15-723	15-753	17-825	19-713	18-707
12	5/32"	11-723	12-702	14-735	15-723	15-753	17-835	19-713	18-707
13	3/16"	11-724	12-702	14-745	15-723	15-753	17-845	19-713	18-707
14	7/32"	11-725	12-702	14-755	15-723	15-753	17-855	19-713	18-707
15	1/4"	11-726	12-702	14-765	15-723	15-753	17-865	19-713	18-707
16	1802F 1/8"	11-722	12-702	14-726	15-726	15-756	17-826	19-713	18-707
17	5/32"	11-723	12-702	14-736	15-726	15-756	17-836	19-713	18-707
18	3/16"	11-724	12-702	14-746	15-726	15-756	17-846	19-713	18-707
19	7/32"	11-725	12-702	14-756	15-726	15-756	17-856	19-713	18-707
20	1/4"	11-726	12-702	14-766	15-726	15-756	17-866	19-713	18-707
21	1803F 7/32"	11-735	12-702	14-856	15-726	15-756	17-886	19-713	18-707
22	1/4"	11-736	12-702	14-866	15-726	15-756	17-896	19-713	18-707
23	1842 1/4"	11-875	12-702	14-815	15-815		17-875	19-875 (front) 19-518 (rear)	18-875
24	1802EM 1/8"	11-722	12-702	14-725	15-723	15-753	17-825	19-713	18-707
25	5/32"	11-723	12-702	14-735	15-723	15-753	17-835	19-713	18-707
26	3/16"	11-724	12-702	14-745	15-723	15-753	17-845	19-713	18-707
27	7/32"	11-725	12-702	14-755	15-723	15-753	17-855	19-713	18-707
28	1/4"	11-726	12-702	14-765	15-723	15-753	17-865	19-713	18-707
29	1802EMK 1/8"	11-722	12-702	14-728	15-728	15-756	17-828	19-713	18-707
30	5/32"	11-723	12-702	14-738	15-728	15-756	17-838	19-713	18-707
31	3/16"	11-724	12-702	14-748	15-728	15-756	17-848	19-713	18-707
32	7/32"	11-725	12-702	14-758	15-728	15-756	17-858	19-713	18-707
33	1/4"	11-726	12-702	14-768	15-728	15-756	17-868	19-713	18-707
34	1803EM 7/32"	11-735	12-702	14-855	15-723	15-753	17-885	19-713	18-707
35	1/4"	11-736	12-702	14-865	15-723	15-753	17-895	19-713	18-707
36	1803EMK 7/32"	11-735	12-702	14-858	15-728	15-756	17-888	19-713	18-707
37	1/4"	11-736	12-702	14-868	15-728	15-756	17-898	19-713	18-707
38	1802FK 1/8"	11-722	12-702	14-726	07-116	15-756	17-826	19-713	18-707
39	5/32"	11-723	12-702	14-736	07-116	15-756	17-836	19-713	18-707
40	3/16"	11-724	12-702	14-746	07-116	15-756	17-846	19-713	18-707
41	7/32"	11-725	12-702	14-756	07-116	15-756	17-856	19-713	18-707
42	1/4"	11-726	12-702	14-766	07-116	15-756	17-866	19-713	18-707
43	2202DA 1/8"	11-722	12-702	14-724	15-723	15-753	17-824	19-713	18-707
44	5/32"	11-723	12-702	14-734	15-723	15-753	17-834	19-713	18-707
45	3/16"	11-724	12-702	14-744	15-723	15-753	17-844	19-713	18-707
46	7/32"	11-725	12-702	14-754	15-723	15-753	17-854	19-713	18-707
47	1/4"	11-726	12-702	14-764	15-723	15-753	17-864	19-713	18-707
48	2203DA 7/32"	11-735	12-702	14-854	15-723	15-753	17-884	19-713	18-707
49	1/4"	11-736	12-702	14-864	15-723	15-753	17-894	19-713	18-707
50	2202FA 1/8"	11-722	12-702	14-726	15-726	15-756	17-826	19-713	18-707
51	5/32"	11-723	12-702	14-736	15-726	15-756	17-836	19-713	18-707
52	3/16"	11-724	12-702	14-746	15-726	15-756	17-846	19-713	18-707
53	7/32"	11-725	12-702	14-756	15-726	15-756	17-856	19-713	18-707
54	1/4"	11-726	12-702	14-766	15-726	15-756	17-866	19-713	18-707
55	2203FA 7/32"	11-735	12-702	14-856	15-726	15-756	17-886	19-713	18-707
56	1/4"	11-736	12-702	14-866	15-726	15-756	17-896	19-713	18-707

# 13. 1802FK attachment

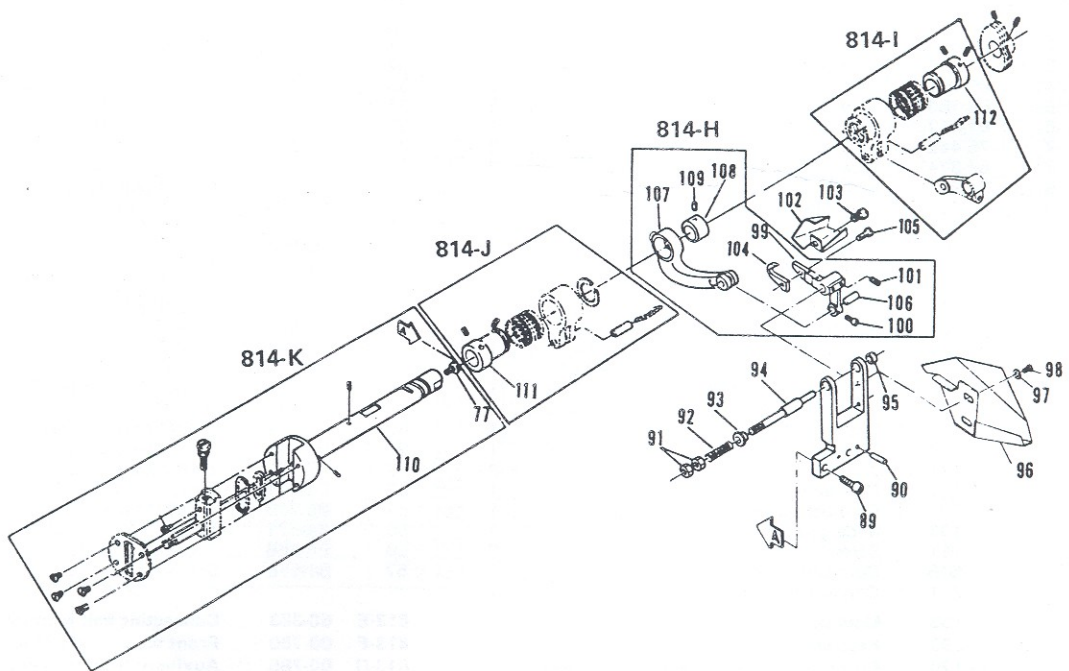


Ref. No.	Part No.	Part Name	Q'ty	Ref. No.	Part No.	Part Name	Q'ty
1	07-114	Base bracket	1	30	86-411	Nut	1
2	85-629	Screw	2	31	61-253	Eccentric	1
3	71-306	Knock pin	4	32	84-712	Screw	2
4	07-101	Front knife base bracket	1	33	86-411	Nut	1
5	84-763	Screw	2	34	71-753	Main shaft 5C	1
6	07-112	Front knife cover	1	35	61-322	Eccentric (0.9)	1
7	75-455	Washer	2	36	61-312	Eccentric (0.8)	1
8	84-374	Screw	2	37	21-504	Upper cloth plate	1
9	84-521	Screw	1	38	14-075	Needle plate support	1
10	93-221	φ8 snap ring	1	39	07-115	Plate for FK	1
11	75-154	Collar	1	40	84-464	Screw	2
12	84-511	Screw	1	41	75-154	Collar	1
13	79-142	Spring	1	42	84-521	Screw	1
14	81-338	Bushing	1	43	84-363	Screw	2
15	07-102	Bracket	1	44	07-117	Auxiliary foot bracket	1
16	84-761	Screw	1	45	84-566	Screw	1
17	75-384	Washer	1	46	07-294	Bush	1
18	07-104	Lower knife	1	47	79-142	Spring	1
19	07-106	Lower knife bracket	1	48	07-118	Presser foot support	1
20	07-103	Upper knife bracket	1	49	85-181	Screw	2
21	07-105	Upper knife	1	50	26-712	Folder base bracket	1
22	84-362	Screw	1	51	07-120	Folder base B	1
23	75-401	Washer	2	52	07-132	Folder base	1
24	61-841	Connecting ball	1	53	84-571	Screw	2
25	63-811	Connecting rod	1	54	26-713	Folder base for F	1
26	07-108	Slide guide plate	1	55	84-571	Screw	1
27	84-161	Screw	2	56	84-566	Screw	2
28	65-506	Connecting bar	1	57	84-572	Screw	2
29	63-211	Connecting rod	1				
813-A	70-153	Main shaft 5C ass'y		813-E	60-383	Connecting ball joint ass'y	
813-B	70-090	Feed eccentric link ass'y		813-F	00-780	Front scalpel ass'y (FK)	
813-C	60-129	Front scalpel eccentric link ass'y (FK)		813-G	00-785	Auxiliary foot bracket ass'y	
813-D	60-780	Looper avoid eccentric link ass'y		813-H	07-118	Auxiliary foot ass'y	

# 14. EM・EMK attachment (EM・EMK関係)



EM System



K System

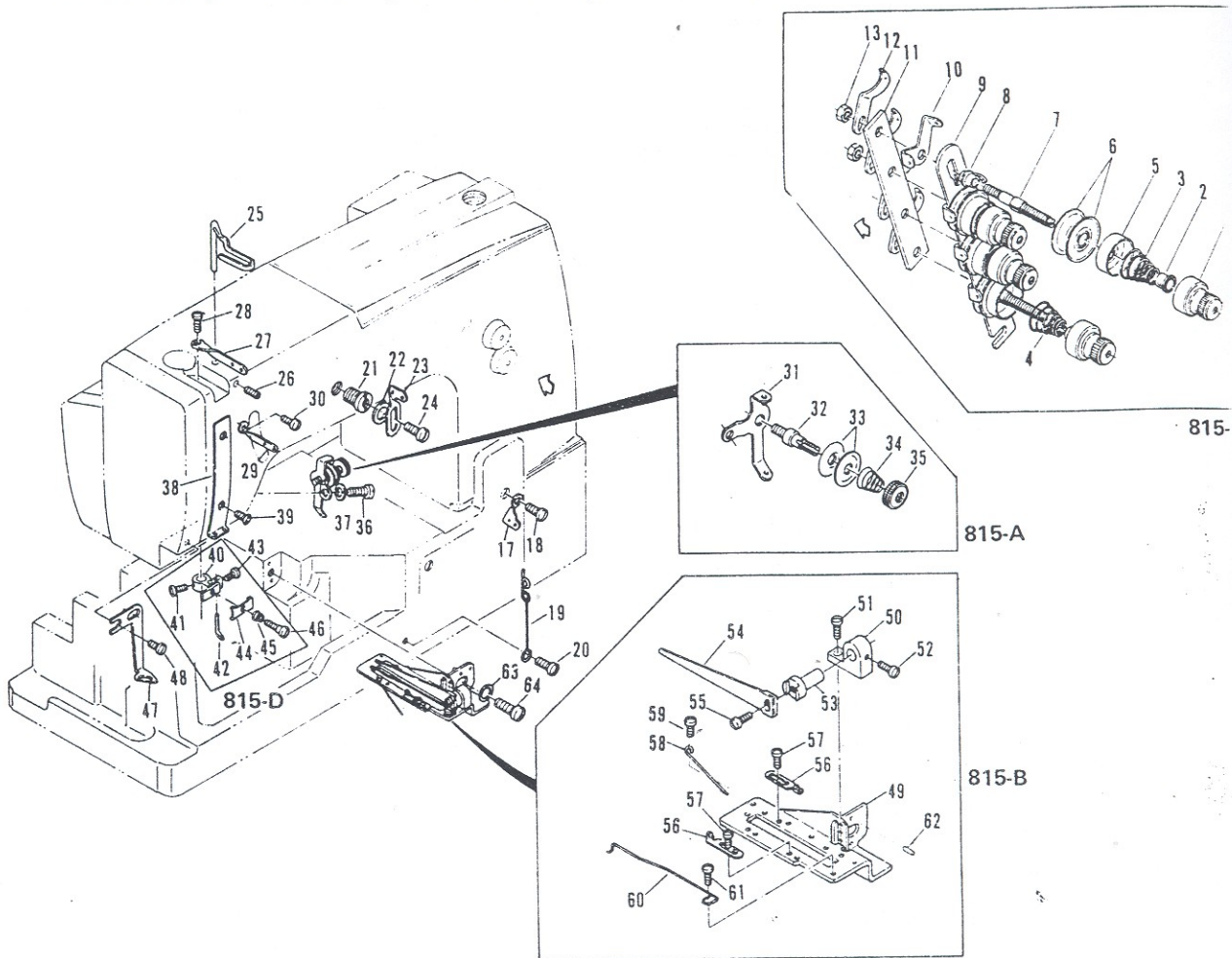
Ref. No.	Part No.	Part Name	Q'ty	Ref. No.	Part No.	Part Name	Q'ty
1	69-106	Needle lever F . . . . .	1	66	01-350	Elastic guide bracket, right . . . . .	1
2	81-213	Needle lever bushing R (EMK) . . . . .	1	67	01-348	Rubber guide bar . . . . .	1
3	81-166	Needle lever stud bushing, large (EMK) . . . . .	1	68	01-349	Elastic guide bracket . . . . .	1
4	71-936	Needle lever stud shaft F . . . . .	1	69	84-161	Screw . . . . .	2
5	81-167	Needle lever stud bushing, small . . . . .	1	70	01-336	Roller . . . . .	1
6	85-113	Screw . . . . .	2	71	79-158	Spring . . . . .	1
7	01-305	Cover set plate . . . . .	1	72	01-314	Spring nut . . . . .	1
8	85-531	Screw . . . . .	1	73	84-715	Screw . . . . .	1
9	01-317	Cover hinge . . . . .	1	74	14-082	Needle plate support . . . . .	1
10	01-318	Hinge pin . . . . .	1	75	07-334	Guide pin . . . . .	1
11	93-200	Snap pin . . . . .	2	76	07-331	Lower knife fitting . . . . .	1
12	84-164	Screw . . . . .	2	77	84-812	Screw . . . . .	1
13	01-304	Safety cover . . . . .	1	78	84-377	Screw . . . . .	1
14	01-316	Cover screw . . . . .	1	79	07-125	Lower knife . . . . .	1
15	23-197	O-ring . . . . .	1	80	07-333	Lower presser foot . . . . .	1
16	75-328	Washer . . . . .	1	81	84-580	Screw . . . . .	1
17	01-321	Driver slide lever . . . . .	1	82	26-764	Front ruler B . . . . .	1
18	55-061	Feed lever fixing pin . . . . .	1	83	84-370	Screw . . . . .	1
19	75-452	Washer . . . . .	1	84	01-353	Slider bar . . . . .	1
20	86-501	Nut . . . . .	1	85	84-312	Screw . . . . .	4
21	75-466	Washer . . . . .	1	86	01-340	Guide bar . . . . .	1
22	61-826	Slide lever connecting link . . . . .	1	87	01-351	Slide bar holder . . . . .	2
23	01-324	Slide lever guide nut . . . . .	1	88	07-121	Base bracket . . . . .	1
24	63-818	Looper connecting ball joint, right . . . . .	1	89	84-812	Screw . . . . .	2
25	84-572	Screw . . . . .	2	90	71-306	Knock pin . . . . .	2
26	01-325	Slide drive lever . . . . .	1	91	86-501	Nut . . . . .	2
27	75-465	Washer . . . . .	1	92	79-171	Spring . . . . .	1
28	84-162	Screw . . . . .	1	93	07-144	Front knife bracket bushing . . . . .	1
29	86-415	Nut . . . . .	1	94	07-131	Guide shaft for holder . . . . .	1
30	65-505	Connecting bar . . . . .	1	95	07-143	Bracket bushing right . . . . .	1
31	86-413	Nut . . . . .	1	96	07-128	Slide guide plate . . . . .	1
32	63-816	Connecting ball joint . . . . .	1	97	75-455	Washer . . . . .	2
33	84-572	Screw . . . . .	2	98	84-575	Screw . . . . .	2
34	61-806	Upper covering connecting link . . . . .	1	99	07-123	Upper knife bracket . . . . .	1
35	86-413	Nut . . . . .	1	100	84-365	Screw . . . . .	1
36	01-322	Driver lever . . . . .	1	101	84-521	Screw . . . . .	1
37	84-812	Screw . . . . .	1	102	07-130	Slide guide plate . . . . .	1
38	01-303	Fixing liner . . . . .	1	103	84-361	Screw . . . . .	1
39	84-812	Screw . . . . .	1	104	07-124	Upper knife . . . . .	1
40	71-306	Knock pin . . . . .	1	105	84-362	Screw . . . . .	1
41	84-862	Screw . . . . .	1	106	71-432	Needle bar connecting link pin . . . . .	1
42	84-763	Screw . . . . .	1	107	63-213	Front knife connecting link . . . . .	1
43	01-301	Elastic adjuster holder . . . . .	1	108	61-252	Front knife eccentric . . . . .	1
44	81-170	Rocker bushing, left . . . . .	1	109	84-711	Screw . . . . .	1
45	01-344	Snap handle, left . . . . .	1	110	71-782	Main shaft 8B . . . . .	1
46	01-342	Snap spring, left . . . . .	1	**111	61-322	Eccentric (0.9) . . . . .	1
47	01-307	Check clutch shaft, small . . . . .	1	**112	61-312	Eccentric (0.8) . . . . .	1
48	84-311	Screw . . . . .	1	113	21-329	Head cover . . . . .	1
49	01-309	Check clutch collar, small . . . . .	4	114	85-721	Screw . . . . .	1
50	01-312	Check clutch roller guard plate . . . . .	2	115	84-361	Screw . . . . .	1
51	01-331	Feed roller, large . . . . .	1	116	86-721	Nut . . . . .	1
52	01-306	Check clutch shaft, large . . . . .	1	117	01-351	Tape guide . . . . .	1
53	01-311	Thrust fiber . . . . .	2	118	84-313	Screw . . . . .	1
54	79-175	Fiber pressing spring . . . . .	1	119	22-754	Arm bed EMK Type . . . . .	1
55	84-311	Screw . . . . .	1	120	84-572	Screw . . . . .	2
56	01-341	Snap spring, right . . . . .	1	121	21-111	Ruler plate . . . . .	1
57	01-343	Snap handle, right . . . . .	1	122	75-156	Guide collar . . . . .	2
58	84-515	Screw . . . . .	1	123	84-312	Screw . . . . .	2
59	81-164	Rocker bushing middle . . . . .	1	124	21-330	Head cover EMK . . . . .	1
60	75-126	Collar . . . . .	1	125	01-358	Tape guide holder . . . . .	2
61	84-512	Screw . . . . .	2	126	84-361	Screw . . . . .	2
62	81-168	Rocker bushing, right . . . . .	1	127	01-326	Brake . . . . .	2
63	01-346	Guide bar . . . . .	1	128	79-174	Spring . . . . .	1
64	01-337	Roller guard plate . . . . .	2	129	87-516	Nut . . . . .	1
65	84-164	Screw . . . . .	4				
814-A	60-977	Needle lever ass'y		814-G	00-175	Tape guide ass'y	
814-B	10-470	Needle plate support ass'y		814-H	00-770	Upper knife ass'y	
814-C	00-170	EMK MD set		814-I	60-080	Looper avoid eccentric link ass'y	
814-D	00-171	Check clutch ass'y		814-J	60-090	Feed eccentric link ass'y	
814-E	60-385	Connecting ball joint A		814-K	70-182	Main shaft 8B (EMK) ass'y	
814-F	60-381	Connecting ball joint B		814-L	00-176	Tape guide (EMK) ass'y	

Note: Parts marked with \*\* are the same as those used in fundamental models (D-type or F-type)

(注) 参照番号に \*\* 印の付いた部品は基本機種(D-タイプまたはF-タイプ)と共通部品です。

Subclass model (サブクラス機種)

# 15. 1842 (Thread eye et components) (糸道関係)



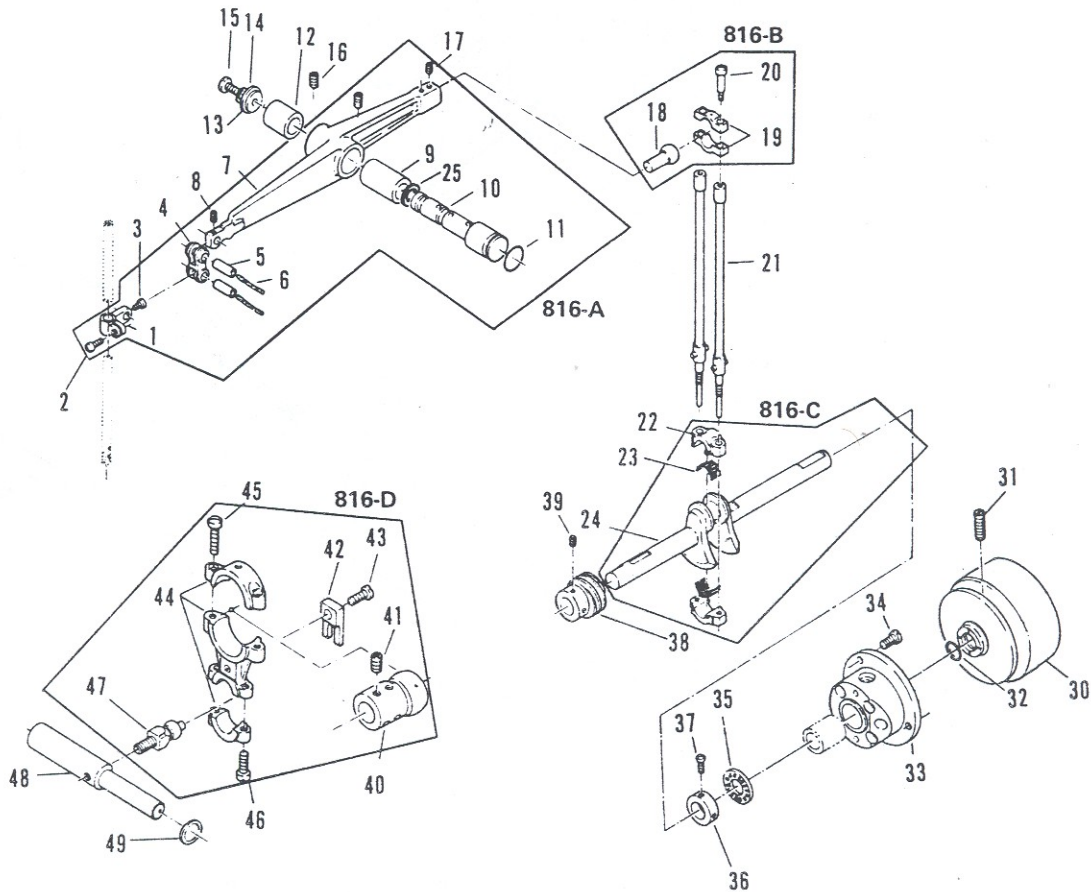
Ref. No.	Part No.	Part Name	Q'ty	Ref. No.	Part No.	Part Name
** 1	41-101	Tension regulating nut	4	** 33	41-152	Needle thread tension regulating disc
** 2	41-105	Tension disc ratchet	4	** 34	41-153	Needle thread tension regulating spring
** 3	41-701	Needle thread tension spring	2	** 35	41-154	Needle thread tension regulating nut
** 4	41-702	Looper thread tension spring	2	** 36	84-571	Screw
** 5	41-107	Tension disc cover	4	** 37	75-453	Washer
** 6	41-111	Tension disc	8	** 38	45-151	Needle thread guide
** 7	41-172	Tension post	4	** 39	84-464	Screw
** 8	41-131	Tension post collar A	4	** 40	41-303	Tension nipper plate
** 9	41-113	Tension post support	1	** 41	84-364	Screw
**10	41-115	Tension post thread eyelet	4	** 42	45-917	'L' thread eyelet
**11	41-121	Tension post holder	1	** 43	85-621	Screw
**12	41-117	Lead in thread eyelet	4	** 44	45-142	Tension nipper
**13	86-411	Nut	2	** 45	41-721	Tension nipper spring
14				** 46	84-171	Screw
15				** 47	45-922	Zigzag thread eyelet
16				** 48	84-361	Screw
**17	47-101	Tension disc cover eyelet 2	1	** 49	43-331	Cast-off support plate
**18	84-374	Screw	1	** 50	43-339	Retainer support bracket
**19	47-202	Looper thread guide eyelet	1	** 51	84-162	Screw
**20	84-361	Screw	1	** 52	84-161	Screw
**21	85-531	Screw	1	** 53	43-112	Pin for looper thread retainer
**22	75-456	Washer	1	** 54	43-333	Looper thread retainer
**23	45-101	Needle thread eyelet 2	1	** 55	84-374	Screw
**24	84-571	Screw	1	** 56	43-337	Looper thread guide eyelet
**25	45-225	Needle thread take-up wire	1	** 57	85-621	Screw
**26	84-521	Screw	1	58	43-105	Looper thread cast-off pin
**27	45-131	Needle bar thread eyelet 2	1	59	85-621	Screw
**28	84-361	Screw	1	** 60	43-335	Looper thread cast-off pin
**29	45-121	Needle lever thread eyelet 2	1	** 61	84-163	Screw
**30	84-361	Screw	1	** 62	71-191	Pin
**31	45-921	Needle thread tension regulating support	1	** 63	75-456	Washer
**32	41-151	Needle thread tension regulating rod	1	** 64	84-571	Screw
**815-A	40-180	Covering thread tension base ass'y				
815-B	40-382	Cast-off support plate ass'y (1842)				
**815-C	40-122	Thread tension ass'y				
**815-D	40-571	Tension nipper ass'y				

NOTE: Parts marked with \*\* are the same as those used in fundamental models (D-type or F-type).

(注) 参照番号に \*\* 印の付いた部品は基本機種(D-タイプまたはF-タイプ)と共通部品です。



# 16. 1842 (Needle lever crank) (弓・クランク機構)



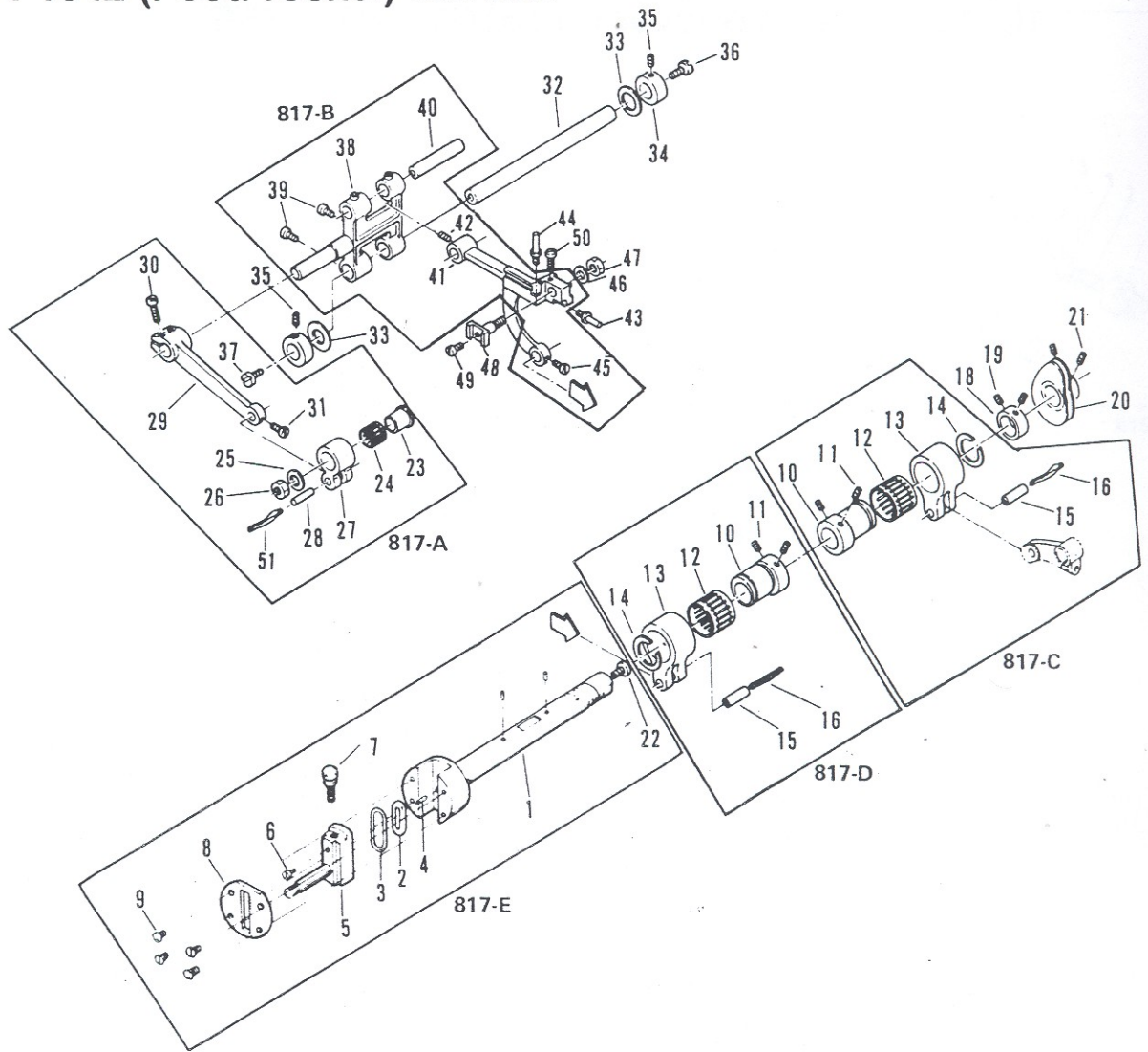
Ref. No.	Part No.	Part Name	Q'ty	Ref. No.	Part No.	Part Name	Q'ty
** 1	73-113	Needle bar connection	1	26			
** 2	84-572	Screw	1	27			
** 3	84-365	Screw	1	28			
** 4	66-111	Needle bar connecting link	1	29			
** 5	71-432	Needle bar connecting pin	2	** 30	69-203	Pulley	1
** 6	23-341	Felt	2	** 31	85-114	Screw	2
** 7	69-105	Needle lever	1	** 32	23-197	O-ring	1
** 8	84-365	Screw	1	** 33	69-305	Flange E	1
** 9	81-113	Needle lever bushing	1	** 34	84-566	Screw	3
** 10	71-933	Needle lever stud	1	** 35	92-231	Bearing	1
** 11	23-195	O-ring	1	** 36	75-112	Crank shaft collar	1
** 12	81-412	Needle lever stud bushing	1	** 37	84-563	Screw	2
** 13	39-107	Oil seal plate	1	** 38	31-410	Worm gear	1
** 14	23-260	Gasket	1	** 39	84-718	Screw	2
** 15	85-182	Screw	1	40	61-512	Looper driving eccentric	1
** 16	85-114	Screw	2	41	85-113	Screw	6
** 17	85-212	Screw	2	** 42	69-121	Eccentric guide fork	1
** 18	61-722	Needle lever connecting rod	1	** 43	84-591	Screw	1
** 19	63-721	Ball joint	1	44	63-511	Looper driving lever ball joint	1
** 20	84-586	Screw	2	45	84-568	Screw	2
** 21	65-311	Connecting bar	2	46	84-567	Screw	2
** 22	63-331	Ball joint	1	** 47	61-713	Looper driving connecting rod	1
** 23	91-011	Needle bearing	28	** 48	71-612	Looper driving shaft	1
24	71-854	Crank shaft 5M	1	** 49	75-332	Washer	1
** 25	75-332	Washer	1	50			
** 816-A	60-971	Needle lever ass'y					
** 816-B	60-340	Needle bar connection ass'y					
816-C	70-035	Crank shaft 5M ass'y					
816-D	60-355	Looper driving ball joint ass'y					

NOTE: Parts marked with \*\* are the same as those used in fundamental models (D-type or F-type).

(注) 参照番号に \*\* 印の付いた部品は基本機種(D-タイプまたはF-タイプ)と共通部品です。

Subclass model (サブクラス機種)

# 17. 1842 (Feed rocker) (送り機構)



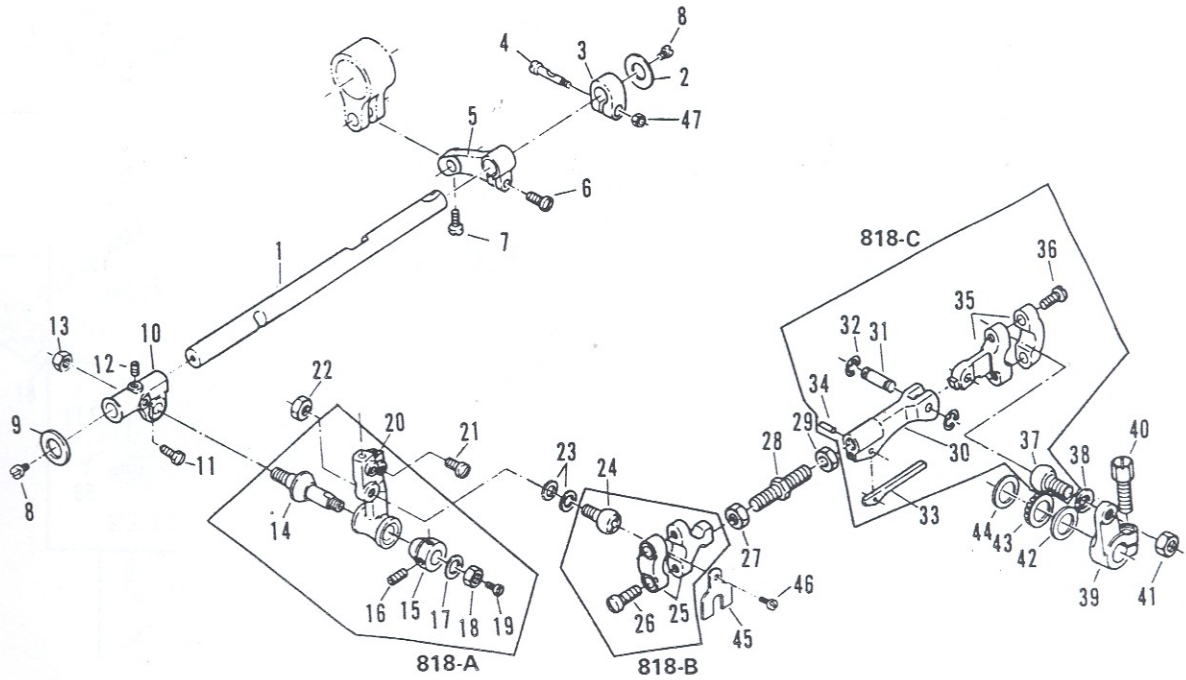
Ref. No.	Part No.	Part Name	Q'ty	Ref. No.	Part No.	Part Name
** 1	71-753	Main shaft 5C	1	26	86-412	Nut
** 2	51-036	Stitch regulating stud cup	1	27	63-351	Feed rocker link
** 3	23-197	O-ring	1	28	71-432	Eccentric link pin
** 4	23-393	Felt	1	29	67-311	Feed rocker arm
** 5	51-013	Feed crank adjusting post	1	30	84-612	Screw
** 6	85-624	Screw	1	31	84-366	Screw
** 7	84-383	Screw	1	32	71-642	Feed rocker arm shaft
** 8	51-031	Main shaft plate	1	33	75-371	Washer
** 9	84-661	Screw	4	34	75-132	Collar
10	61-312	Eccentric 0.8	2	35	84-761	Screw
**11	84-715	Screw	4	36	84-574	Screw
**12	91-406	Bearing	2	37	84-576	Screw
**13	63-232	Eccentric link	2	38	55-041	Feed rocker arm
**14	93-406	Snap ring	2	39	84-571	Screw
**15	71-431	Eccentric link pin	2	40	71-531	Shaft
**16	23-341	Felt	2	41	55-174	Feed rocker
17				42	84-712	Screw
**18	75-114	Collar	1	43	84-176	Screw
**19	84-511	Screw	2	44	84-177	Screw
**20	49-133	Looper thread double disk take up	1	45	84-366	Screw
**21	84-711	Screw	2	46	75-381	Washer
22	84-576	Screw	1	47	86-501	Nut
23	75-243	Feed crank link collar	1	48	55-051	Feed dog holder
24	91-271	Bearing	1	49	84-588	Screw
25	75-453	Washer	1	50	84-463	Screw
				51	23-341	Felt
817-A	60-711	Feed rocker arm ass'y				
817-B	50-571	Feed rocker ass'y				
**817-C	60-780	Looper avoid eccentric link ass'y				
817-D	60-080	Feed eccentric link ass'y				
817-E	70-153	Main shaft 5C ass'y				

NOTE: Parts marked with \*\* are the same as those used in fundamental models (D-type or F-type).

(注) 参照番号に \*\* 印の付いた部品は基本機種(D-タイプまたはF-タイプ)と共通部品です。

Subclass model (サブクラス機種)

# 18. 1842 (Looper) (ルーパー機構)

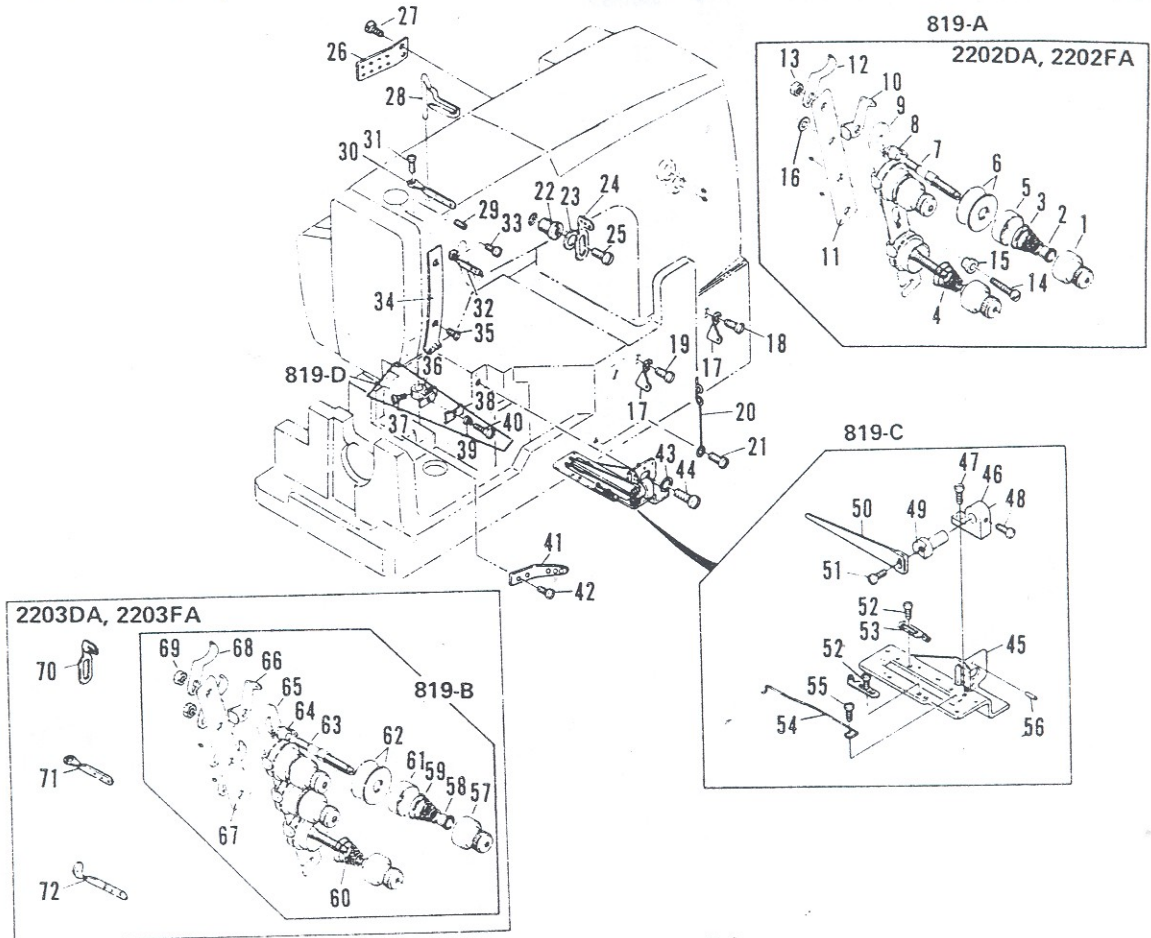


Ref. No.	Part No.	Part Name	Q'ty	Ref. No.	Part No.	Part Name	Q'ty
**1	71-561	Looper holder shaft	1	**26	84-572	Screw	2
**2	75-371	Washer	1	**27	86-412	Nut (Left)	1
**3	75-139	Looper holder shaft collar	1	**28	65-401	Connecting bar	1
**4	71-454	Screw	1	**29	86-411	Nut	1
**5	67-132	Looper avoid lever	1	**30	65-902	Connecting rod	1
**6	84-612	Screw	1	**31	71-322	Shaft	1
**7	84-366	Screw	1	**32	93-201	Snap ring	2
**8	84-761	Screw	2	**33	79-601	Plate spring	1
**9	75-371	Washer	1	**34	71-201	Pin	1
10	19-305	Looper rocker E	1	**35	63-821	Connecting rod	1
**11	84-716	Screw	1	**36	84-572	Screw	2
**12	84-766	Screw	1	37	61-823	Connecting ball	1
**13	86-502	Nut	1	38	75-401	Washer	1
**14	71-901	Looper rocker tapered pin	1	**39	67-221	Looper driving lever A	1
**15	81-401	Tapered pin bushing	1	40	85-211	Screw	1
**16	84-521	Screw	2	41	86-411	Nut	1
**17	75-452	Washer	1	42	75-331	Washer	1
**18	86-501	Nut	1	43	92-231	Bearing	1
**19	84-361	Screw	1	44	75-327	Washer	1
20	19-314	Looper holder D	1	**45	35-199	Oil guide	1
**21	84-616	Screw	2	**46	84-164	Screw	1
**22	86-413	Nut	1	**47	86-314	Nut	1
23	75-453	Washer	2	48			
24	61-823	Connecting ball	1	49			
**25	63-812	Connecting rod	1	50			
818-A	10-914	Looper holder (D) ass'y					
818-B	60-372	Connecting link ass'y					
818-C	60-373	Driving connecting link ass'y					

NOTE: Parts marked with \*\* are the same as those used in fundamental models (D-type or F-type).

(注) 参照番号に \*\* 印の付いた部品は基本機種(D-タイプまたはF-タイプ)と共通部品です。

# 19. DMM (Thread eyelet components) (糸道関係)

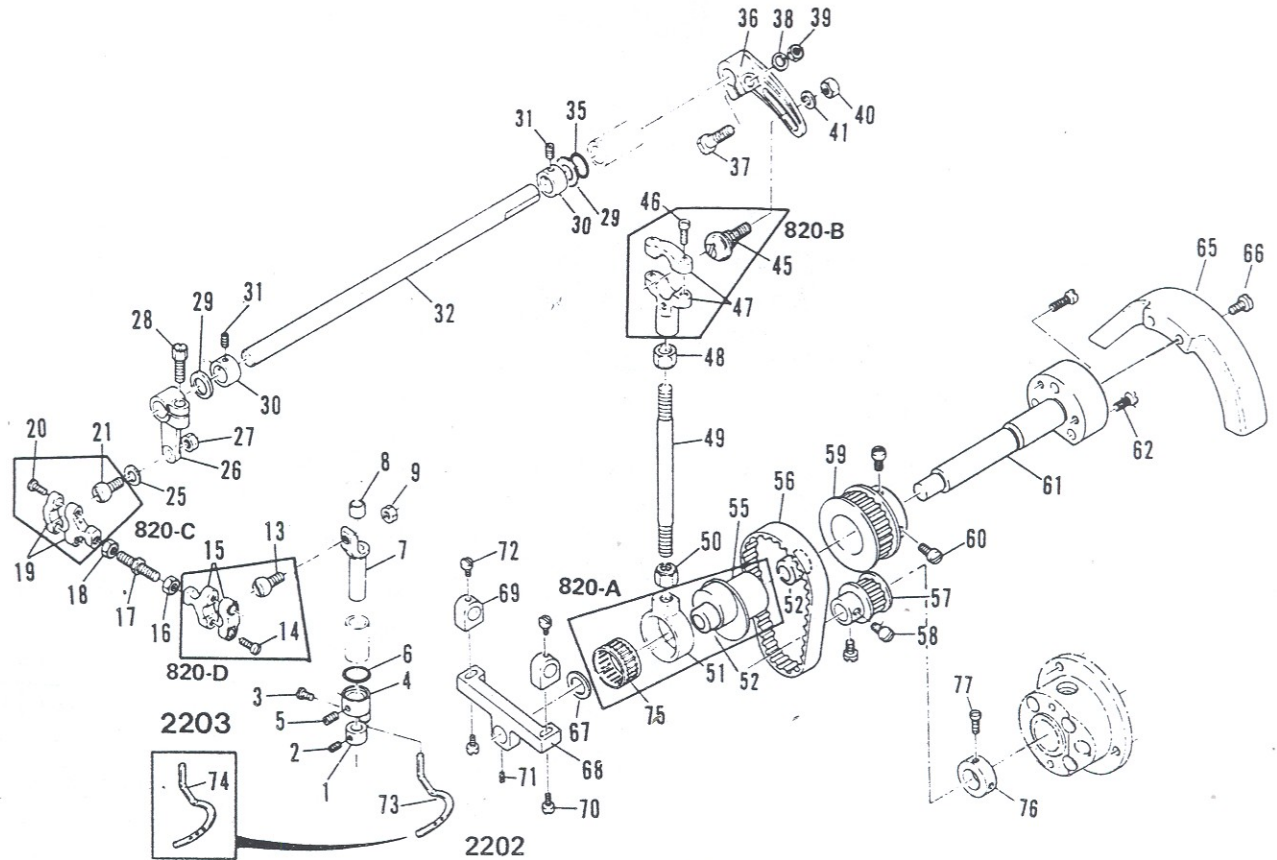


Ref. No.	Part No.	Part Name	Q'ty	Ref. No.	Part No.	Part Name	Q'ty
**1	41-101	Tension regulating nut	3	**37	84-364	Screw	1
**2	41-105	Tension disc ratchet	3	**38	45-142	Tension nipper	1
**3	41-701	Needle thread tension spring	2	**39	41-721	Tension nipper spring	1
**4	41-702	Looper thread tension spring	1	**40	84-171	Screw	1
**5	41-107	Tension disc cover	3	41	45-981	Covering looper thread eyelet, front	1
**6	41-111	Tension disc	6	**42	84-361	Screw	1
**7	41-172	Tension post	3	**43	75-456	Washer	1
**8	41-131	Tension post collar A	3	**44	84-571	Screw	1
**9	41-113	Tension post support	1	**45	43-331	Cast-off support plate C	1
**10	41-115	Tension post thread eyelet	3	**46	43-339	Retainer support bracket	1
**11	41-121	Tension post holder	1	**47	84-162	Screw	1
**12	41-117	Lead in thread eyelet	3	**48	84-161	Screw	1
**13	86-411	Nut	2	**49	43-112	Pin for looper thread retainer	1
**14	84-764	Screw	1	**50	43-333	Looper thread retainer	1
**15	41-132	Tension post collar B	1	**51	84-374	Screw	1
**16	75-381	Washer	1	**52	85-621	Screw	1
**17	41-416	Needle thread eyelet	2	**53	43-337	Looper thread guide eyelet C	1
**18	84-374	Screw	1	**54	43-335	Looper thread cast-off pin	1
**19	84-566	Screw	1	**55	84-163	Screw	1
**20	47-202	Looper thread guide eyelet B	1	**56	71-191	Pin	1
**21	84-361	Screw	1	**57	41-101	Tension regulating nut	1
**22	85-531	Screw	1	**58	41-105	Tension disc ratchet	1
**23	75-456	Washer	1	**59	41-701	Needle thread tension spring	1
**24	45-101	Needle thread eyelet 2	1	**60	41-702	Looper thread tension spring	1
**25	84-571	Screw	1	**61	41-107	Tension disc cover	1
**26	45-982	Covering looper thread eyelet rear	1	**62	41-111	Tension disc	1
**27	84-571	Screw	2	**63	41-172	Tension post	1
**28	45-225	Needle thread take-up wire	1	**64	41-131	Tension post collar A	1
**29	84-521	Screw	1	**65	41-113	Tension post support	1
**30	45-131	Needle bar thread eyelet 2	1	**66	41-115	Tension post thread eyelet	1
**31	84-361	Screw	1	**67	41-121	Tension post holder	1
**32	45-121	Needle lever thread eyelet 2	1	**68	41-117	Lead in thread eyelet	1
**33	84-361	Screw	1	**69	86-411	Nut	1
**34	45-151	Needle thread guide	1	**70	45-102	Needle thread eyelet 3	1
**35	84-464	Screw	2	**71	45-132	Needle bar thread eyelet 3	1
**36	41-303	Tension nipper plate	1	**72	45-122	Needle lever thread eyelet 3	1
**819-A	40-121	Thread tension ass'y (2202)					
**819-B	40-131	Thread tension ass'y (2203)					
**819-C	40-381	Cast-off support plate ass'y					
819-D	40-571	Tension nipper plate ass'y					

NOTE: Parts marked with \*\* are the same as those used in fundamental models (D-type or F-type).

(注) \*\*の付いた部品は基本機種(DタイプまたはFタイプ)と共通部品です。

## 20. DMM (Upper shaft components) (上飾り機構)



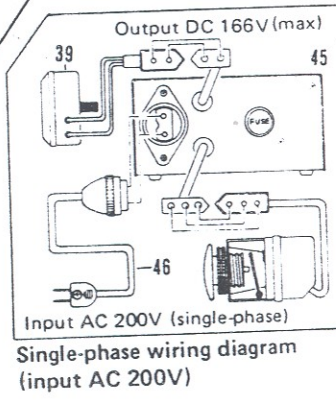
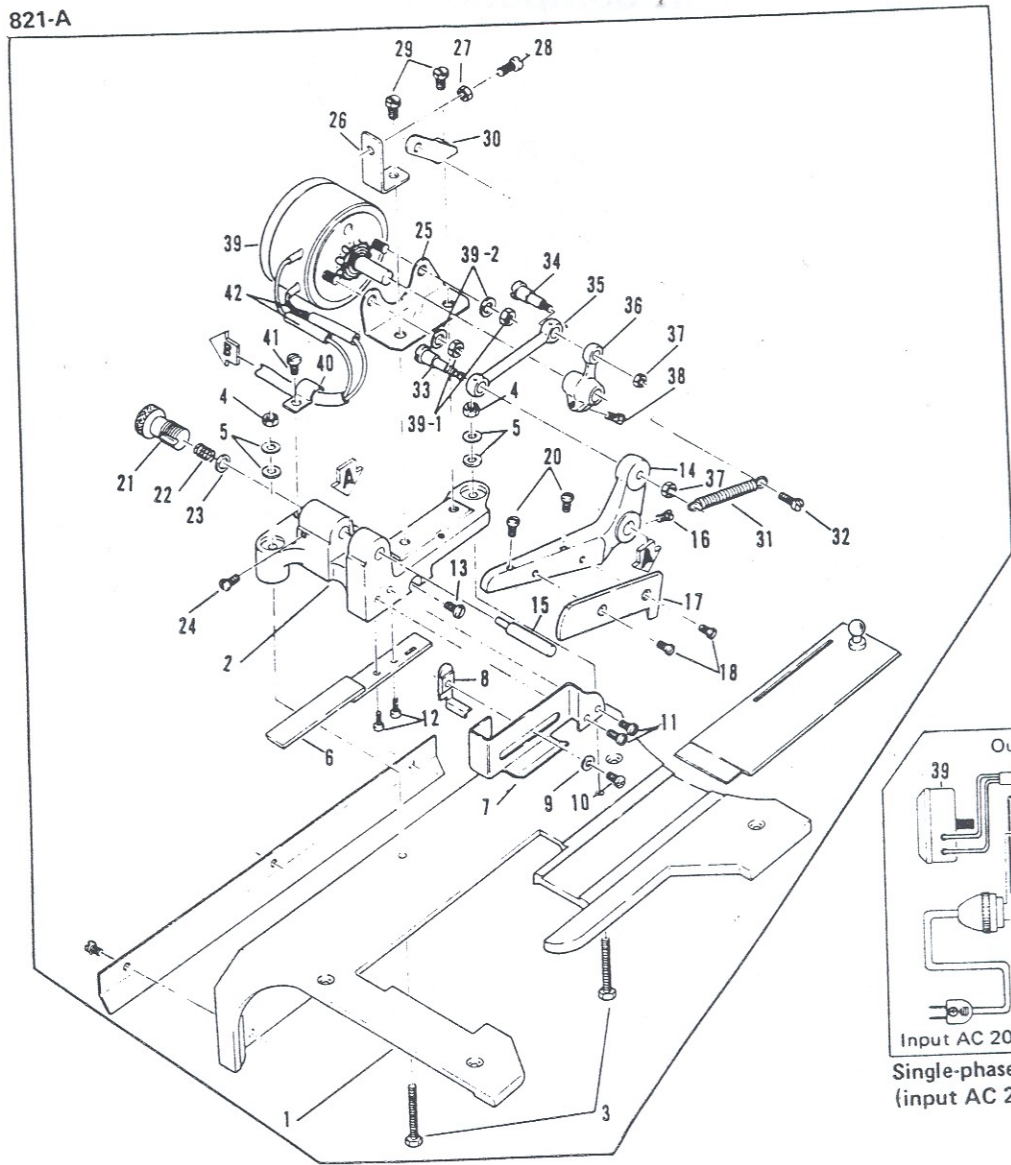
Ref. No.	Part No.	Part Name	Q'ty	Ref. No.	Part No.	Part Name	Q'ty
** 1	75-154	Presser bar collar	1	**39	86-501	Nut	1
** 2	84-512	Screw	1	**40	86-501	Nut	1
** 3	84-361	Screw	2	**41	75-381	Washer	1
** 4	04-211	Covering holder	1	42			
** 5	84-521	Screw	2	43			
** 6	23-200	O-ring	1	44			
** 7	04-206	Covering base	1	**45	61-714	Connecting rod	1
** 8	94-231	ø8.1 shaft seal	1	**46	84-567	Screw	2
** 9	86-413	Nut	1	**47	63-711	Connecting ball joint small	1
10				**48	86-742	Nut, left	1
11				49	65-303	Connecting bar	1
12				**50	86-741	Nut	1
**13	61-806	Connecting rod	1	**51	63-201	Upper shaft connecting link	1
**14	84-572	Screw	2	**52	81-101	Bushing	2
**15	63-816	Covering thread ball joint	1	53			
**16	86-411	Nut	1	54			
**17	65-402	Connecting bar S	1	55	61-221	Covering looper driving eccentric	1
**18	86-412	Nut	1	56	58-112	Timing belt	1
**19	63-818	Connecting ball joint	1	57	69-567	Timing pulley S	1
**20	84-572	Screw	2	58	84-766	Screw	2
**21	61-823	Connecting rod	1	59	69-581	Timing pulley L	1
22				60	84-762	Screw	2
23				61	71-701	Timing pulley stud shaft	1
24				62	84-764	Screw	3
**25	75-453	Washer	1	63			
**26	67-251	Covering lever	1	64			
**27	86-411	Nut	1	65	21-405	Pulley cover	1
**28	85-211	Screw	1	66	84-566	Screw	1
**29	75-332	Washer	2	67	75-161	Washer	1
**30	75-113	Collar	2	68	69-601	Bracket	1
**31	84-718	Screw	4	69	69-602	Bracket	2
**32	71-692	Upper shaft	1	70	84-566	Screw	2
33				71	85-112	Screw	1
34				72	84-564	Screw	2
**35	23-200	O-ring	1	73	19-220	Looper (2202)	1
**36	67-172	Upper shaft lever	1	74	19-221	Looper (2203)	1
**37	55-061	Screw	1	**75	91-156	Bearing	1
**38	75-381	Washer	1	76	75-112	Washer	1
820-A	60-125	Upper accessory driving eccentric ass'y		77	84-761	Screw	2
** 820-B	60-374	Upper looper driving ball joint ass'y					
** 820-C	60-382	Connecting ball joint ass'y					
** 820-D	60-381	Covering thread ball joint ass'y					

NOTE: Parts marked with \*\* are the same as those used in fundamental models (D-type or F-type).

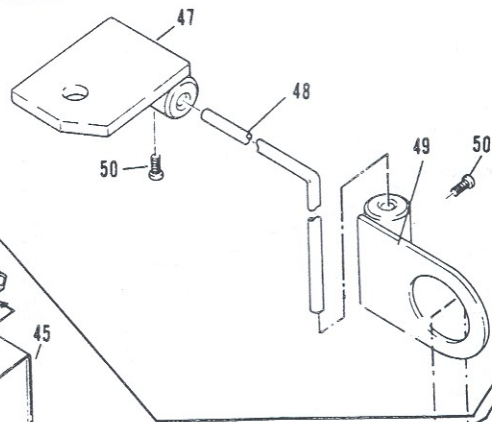
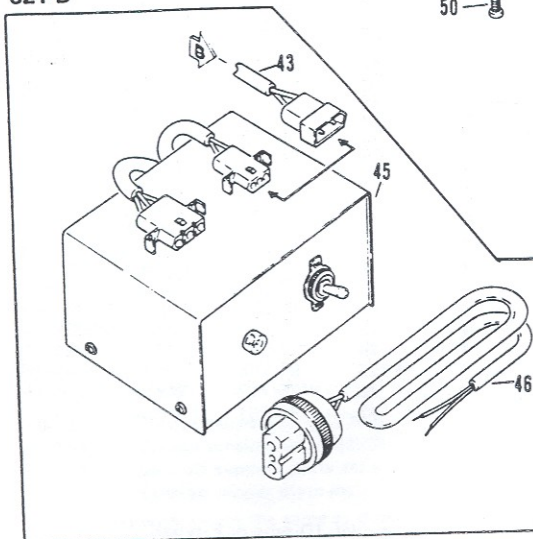
(注) 参照番号に \*\* 印の付いた部品は基本機種(D-タイプまたはF-タイプ)と共通部品です。

# 21. Rear cutter (MC-10) (後カッター装置)

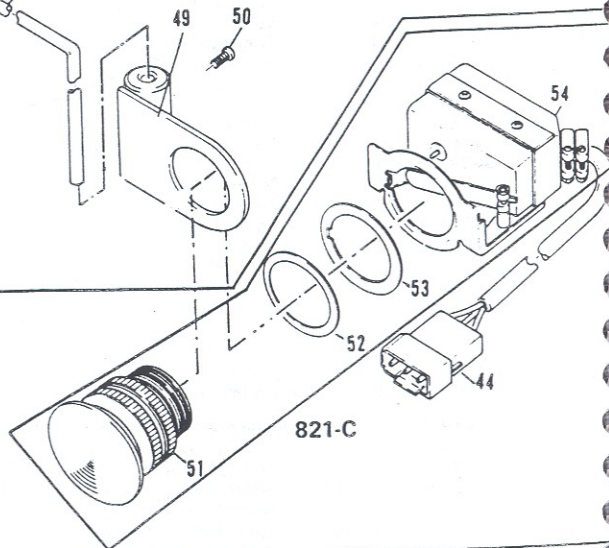
821-A



821-B



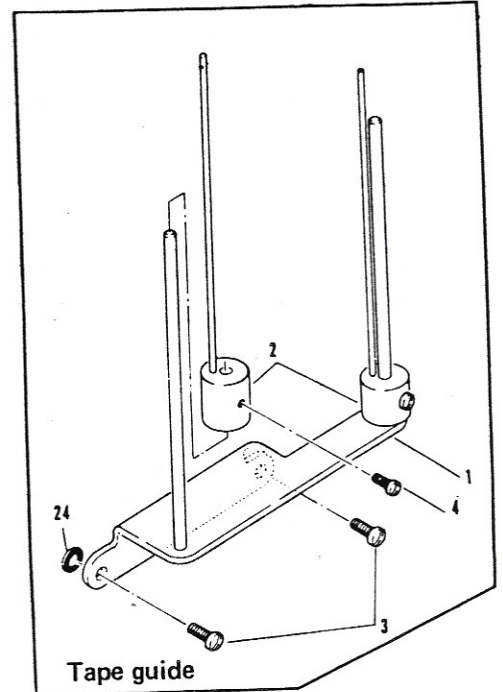
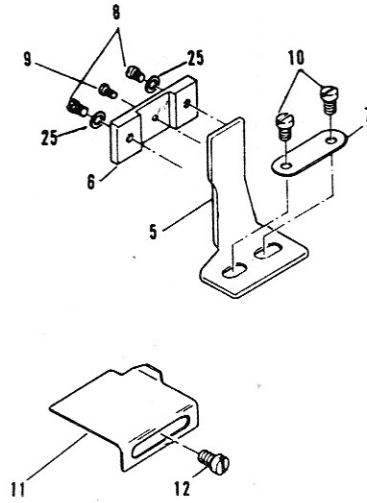
821-C



Ref. No.	Part No.	Part Name	Q'ty	Ref. No.	Part No.	Part Name	Q'ty
1	21-508	Upper cloth plate (MC-10)	1	30	08-115	Mounting bracket for spring	1
2	08-102	Rear cutter base	1	31	79-146	Spring	1
3	84-813	Screw	2	32	84-564	Screw	1
4	86-411	Nut	2	33	84-784	Screw B	1
5	75-381	Washer	4	34	84-782	Screw A	1
6	08-105	Rear cutter, lower scalpel	1	35	66-506	Connecting crank	1
7	08-109	Rear cutter safety cover	1	36	67-151	Lever	1
8	08-110	Rear cutter guide plate	1	37	86-411	Nut	2
9	75-455	Washer	1	38	84-612	Screw	1
10	84-374	Screw	1	39	08-101	Rotary solenoid	1
11	84-374	Screw	2	39-1		Nut	2
12	84-564	Screw	2	39-2		Washer	2
13	84-564	Screw	1	40	08-107	Cord support	1
14	08-103	Scalpel bracket arm	1	41	84-374	Screw	1
15	71-551	Scalpel bracket shaft	1	42		Vinyl pipe	2
16	84-366	Screw	1	43	08-122	Power cord A (solenoid side)	1 set
17	08-104	Rear cutter upper scalpel	1	44	08-124	Switch cord	1 set
18	84-661	Screw	2	45	08-126	Control box (AC 200V x DC 100V)	1 set
19				46	08-123	Power cord B (power side)	1 set
20	84-374	Screw	2	47	08-112	Switch bracket	1
21	87-521	Screw	1	48	08-113	Switch mounting rod	1
22	79-142	Spring	1	49	08-114	Switch mounting bracket	1
23	75-452	Washer	1	50	84-764	Screw	2
24	84-362	Screw	1	51		Push button	1
25	08-108	Solenoid bracket	1	52		Washer	1
26	08-116	Upper scalpel stopper	1	53		Packing	1
27	86-311	Nut	1	54		Microswitch	1
28	84-591	Screw	1				
29	84-812	Screw	2				
821-A	00-810	Rear cutter base ass'y					
821-B	08-121	Control base ass'y					
821-C	08-125	Microswitch ass'y					

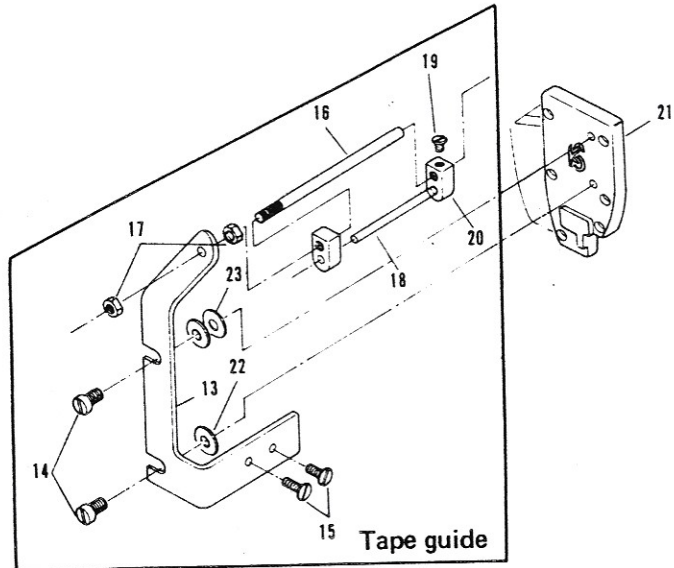
## 22. Attachments (アタッチメント)

DWK-1802F  
 DWK-1803F  
 DMM-2202FA  
 DMM-2203FA



822-A

DWK-1802DE  
 DWK-1803DE

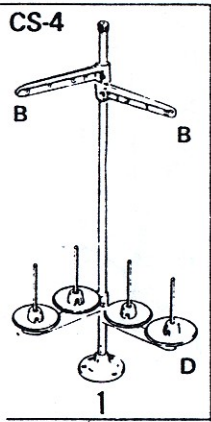


822-B

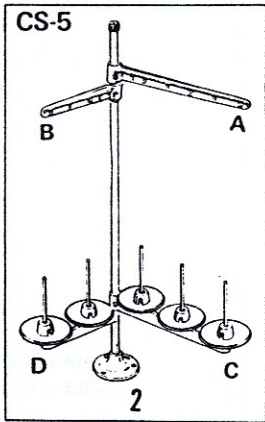
Ref. No.	Part No.	Part Name	Q'ty	Ref. No.	Part No.	Part Name
1	26-702	Tape guide bracket . . . . .	1	13	26-706	Rubber puller guide plate . . . . .
2	26-703	Tape guide adjuster . . . . .	2	14	84-566	Screw . . . . .
3	84-566	Screw . . . . .	2	15	84-363	Screw . . . . .
4	84-571	Screw . . . . .	2	16	26-751	Rubber puller bar . . . . .
5	26-711	Folder base . . . . .	1	17	86-411	Nut . . . . .
6	26-713	Folder base for F . . . . .	1	18	26-752	Rubber puller guide bar . . . . .
7	26-712	Folder base bracket . . . . .	1	19	84-162	Screw . . . . .
8	84-566	Screw . . . . .	2	20	26-753	Rubber puller fittings . . . . .
9	84-571	Screw . . . . .	1	21	21-319	Head cover . . . . .
10	85-181	Screw . . . . .	2	22	75-456	Washer . . . . .
11	26-761	Plate . . . . .	1	23	75-456	Washer . . . . .
12	84-361	Screw . . . . .	1	24	23-187	Cushion rubber . . . . .
822-A	20-670	Tape guide ass'y F Type		25	75-455	Washer . . . . .
822-B	20-675	Rubber puller guide plate E Type				



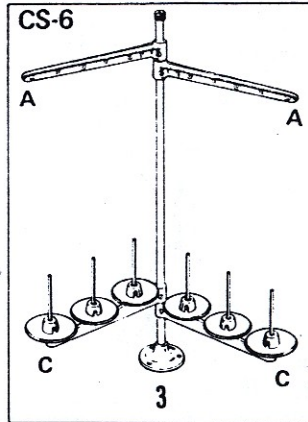
## 23. Thread stands (糸立て)



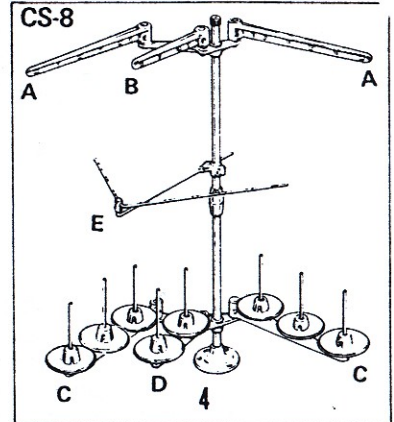
DWK-1802



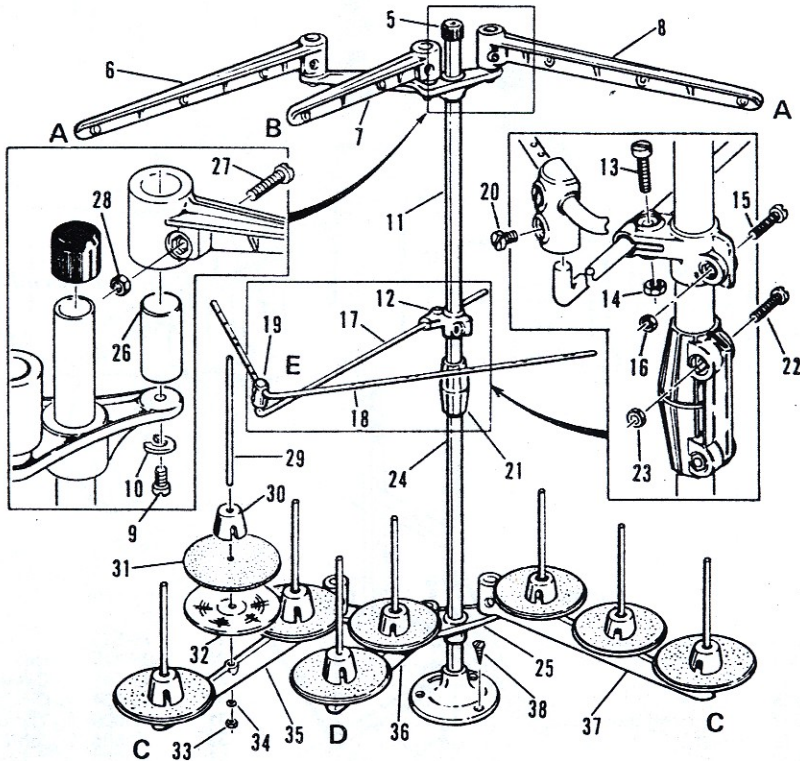
DWK-1803  
DMM-1842  
DMM-2202



DWK-1804

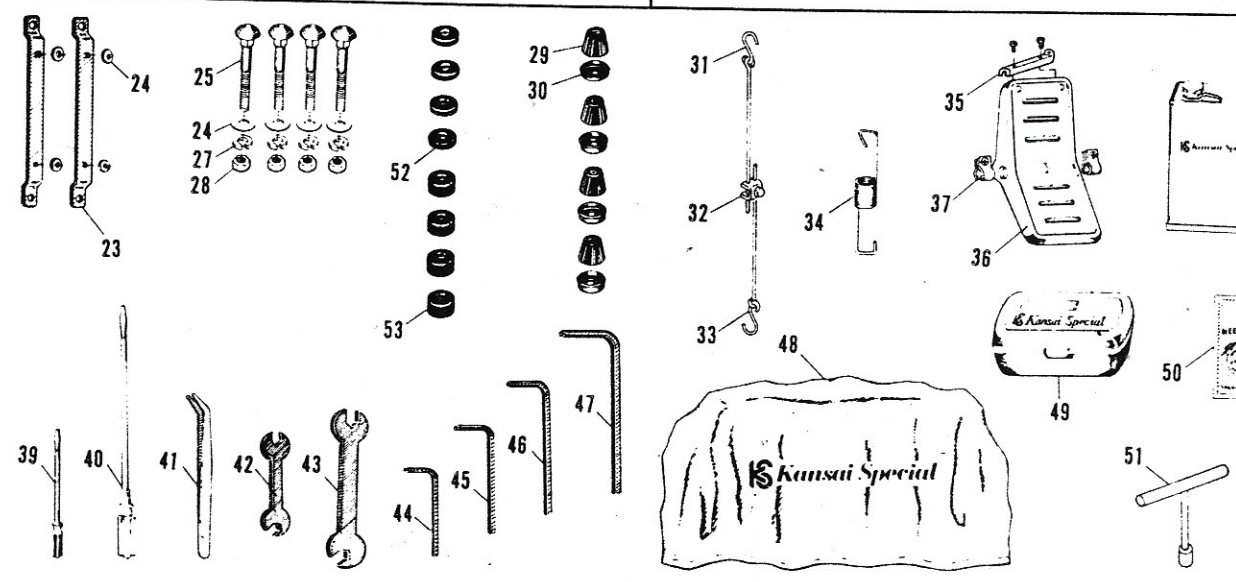
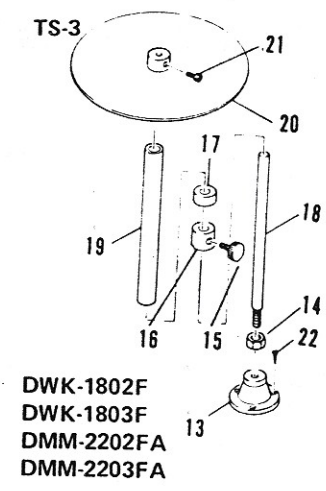
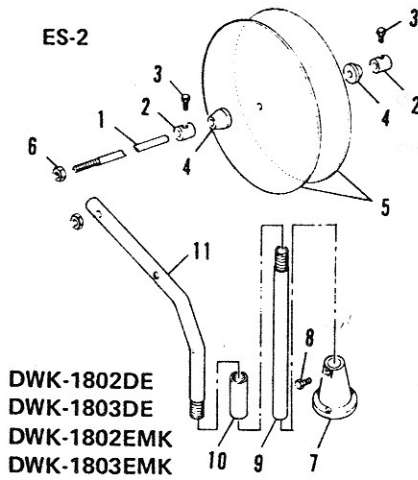


DMM-2203



Ref. No.	Part No.	Part Name	Q'ty	Ref. No.	Part No.	Part Name	Q'ty
1	42-004	Thread stand (4) CS-4	.1 set	21		Joint	1
2	42-005	Thread stand (5) CS-5	.1 set	22		Screw	2
3	42-006	Thread stand (6) CS-6	.1 set	23		Nut	2
4	42-008	Thread stand (8) CS-8	.1 set	24	42-112	Bar (low)	1
5	42-120	Cap	1	25		Base	2
6	42-116	Thread guide bracket (3)		26		Mounting bracket	6
7		Thread guide bracket (2)		27		Screw	
8		Thread guide bracket (3)		28		Nut	
9		Screw	6	29		Spool pin	
10		Washer	6	30		Spool pin retaining fin	
11	42-113	Bar (upper)	1	31	42-119	Spool mat	1
12		Shank	1	32	42-123	Spool tray	
13		Screw	1	33		Nut	
14		Nut	1	34		Washer	
15		Screw	1	35	42-115	Spool pin bracket (3)	
16		Nut	1	36		Spool pin bracket (2)	
17		Thread eyelet guide arm bar	1	37	42-115	Spool pin bracket (3)	
18		Thread eyelet guide	1	38	42-122	Screw	3
19		Joint	1	39			
20		Screw	2	40			

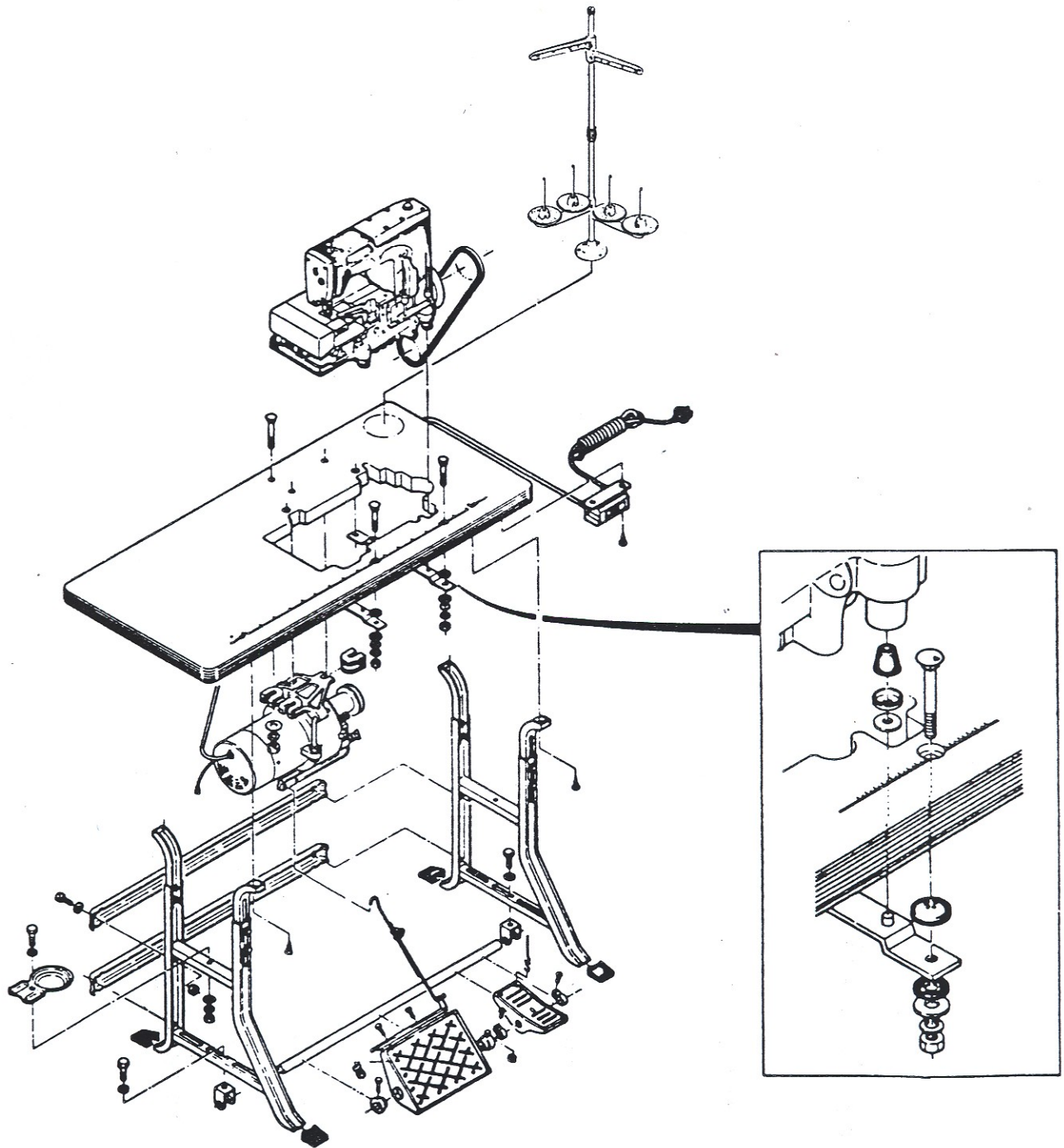
## 24. Tape stands•accessories (テープ立て・アクセサリー)



Ref. No.	Part No.	Part Name	Q'ty
1	26-866	Tape reel post	1
2	26-869	Stop collar	2
3	87-156	Hex. bolt	2
4	26-868	Collar	2
5	26-867	Tape reel disc	2
6	88-176	Nut	2
7	26-876	Base	1
8	87-161	Hex. bolt	2
9	26-877	Post A	2
10	26-879	Connecting pipe	1
11	26-878	Post B	1
12			
13	26-856	Base	1
14	88-156	Nut	1
15	87-149	Screw	1
16	26-860	Stop collar	1
17	26-861	Cushion	1
18	26-857	Post B	1
19	26-859	Guide pipe	1
20	26-858	φ 200 tape reel disc	1
21	87-150	Screw	1
22		Wood screw	3
23	25-141	Machine mount bracket	2
24	23-324	Felt	4
25	80-751	Screw	4
26	75-451	Washer MB	4

Ref. No.	Part No.	Part Name	Q'ty
27	75-529	Spring Washer	4
28	88-176	Nut	4
29	31-161	Cushion rubber	4
30	39-104	Disc	4
31	77-006	Tie-rod (upper)	1
32	77-005	Joint (with screw)	1
33	77-007	Tie-rod (lower)	1
34	77-003	Spring	1
35	77-004	Coupling	1
36	77-001	Pedal	1
37	77-002	Pedal stopper	2
38	28-611	Oil TELLESO 33	1
39	28-451	Screwdriver (small)	1
40	28-452	Screwdriver (large)	1
41	28-011	Tweezers	1
42	28-421	Spanner (small)	1
43	28-422	Spanner (large)	1
44	28-311	Wrench A	1
45	28-312	Wrench B	1
46	28-313	Wrench C	1
47	28-314	Wrench D	1
48	28-021	Machine cover	1
49	28-001	Accessory box	1
50	13	Needle DV43, 62x43 SY3516 SMx1014A (1804D)	1
51	28-464	Wrench T	1
52	23-121	Rubber A	4
53	23-122	Rubber B	4

## 25. Table stand installation diagram (テーブルスタンド据付図)



## 26. Index (索引)

Part No.	Q'ty	Page No.	Part No.	Q'ty	Page No.	Part No.	Q'ty	Page No.	Part No.	Q'ty	Page No.
01-301	1	20	08-102	1	28	14-858	1	16	17-845-2	1	14
-303	1	20	-103	1	28	-864	1	14	-846	1	16
-304	1	20	-104	1	28	-865	1	14	-846-2	2	16
-305	1	20	-105	1	28	-866	1	16	-848	1	16
-306	1	20	-107	1	28	-868	1	16	-848-2	1	16
-307	1	20	-108	1	28	-893	1	14	-854	1	14
-309	4	20	-109	1	28	15-723	1	14	-854-1	1	14
-311	2	20	-110	1	28	-726	1	16	-855	1	14
-312	2	20	-112	1	28	-728	1	16	-855-2	1	14
-314	1	20	-113	1	28	-753	1	14	-856	1	16
-316	1	20	-114	1	28	-756	1	16	-856-2	1	16
-317	1	20	-115	1	28	-815	1	14	-856-2	1	16
-318	1	20	-116	1	28	17-512-3	1	14	-858	1	16
-321	1	20	-122	1	28	-726-1	1	16	-858-2	1	16
-322	1	20	-123	1	28	-726-3	1	16	-864	1	14
-324	1	20	-124	1	28	-726-4	1	16	-864-1	1	14
-325	1	20	-126	1	28	-726-5	1	16	-865	1	14
-326	2	20				-726-7	1	16	-865-2	1	14
-331	1	20	11-704	1	14	-726-7	1	16	-866	1	16
-336	1	20	-722	1	14	-728-4 Δ	1	16	-866-2	1	16
-337	1	20	-722	1	16	-728-6	1	16	-868	1	16
-340	1	20	-723	1	14	-728-6 Δ	1	16	-868-2	1	16
-341	1	20	-723	1	16	-728-7	1	16	-875	1	16
-342	1	20	-724	1	14	-728-8	1	16	-875-2	1	16
-343	1	20	-724	1	16	-728-9	1	16	-884	1	16
-344	1	20	-725	1	14	-728-10	1	16	-884-1	1	16
-346	1	20	-725	1	16	-728-11	1	16	-885	1	16
-348	1	20	-726	1	14	-736-3	1	16	-885-2	1	16
-349	1	20	-726	1	16	-746-3	1	16	-886	1	16
-350	1	20	-735	1	14	-756-3	1	16	-886-2	1	16
-351	2	20	-735	1	16	-766-3	1	16	-888	1	16
-353	1	20	-736	1	14	-766-3	1	16	-888-2	1	16
04-206	1	12	-736	1	16	-784-2	1	14	-893	1	16
-206	1	26	-875	1	14	-784-2	1	14	-893-1	1	16
-211	1	12	12-702	1	14	-784-3	1	14	-894	1	16
-211	1	26	-702	1	16	-784-4	1	14	-894-1	1	16
07-101	1	18	-893	1	14	-784-5	1	14	-895	1	16
-102	1	18	13-	1	31	-785-1	1	14	-895-2	1	16
-103	1	18	14-031	1	2	-785-1	1	14	-896	1	16
-104	1	18	-075	1	18	-785-3	1	14	-896-2	1	16
-105	1	18	-082	1	20	-785-4	1	14	-898	1	16
-106	1	18	-724	1	14	-785-5	1	14	-898-2	1	16
-108	1	18	-725	1	14	-785-6	1	14	18-707	1	16
-112	1	18	-726	1	16	-786-1	1	16	-707	1	16
-114	1	18	-728	1	16	-786-4	1	16	-708	1	16
-115	1	18	-734	1	14	-786-5	1	16	-708	1	16
-116	1	16	-735	1	14	-824	1	14	-709	1	16
-117	1	18	-736	1	16	-824-1	1	14	-709	1	16
-118	1	18	-738	1	16	-825	1	14	-721	1	16
-120	1	18	-744	1	14	-825-2	1	14	-722	1	16
-121	1	20	-745	1	14	-826	1	16	-875	1	16
-123	1	20	-746	1	16	-826-2	1	16	19-303	1	16
-124	1	20	-748	1	16	-828	1	16	-305	1	16
-125	1	20	-754	1	14	-828-2	1	16	-220	1	16
-128	1	20	-755	1	14	-834	1	14	-221	1	16
-130	1	20	-756	1	16	-834-1	1	14	-314	1	16
-131	1	20	-758	1	16	-835	1	14	-315	1	16
-132	1	18	-764	1	14	-835-2	1	14	-518	1	16
-143	1	20	-765	1	14	-836	1	16	-713	1	16
-144	1	20	-766	1	16	-836-2	1	16	-713	1	16
-294	1	18	-768	1	16	-838	1	16	-806	1	16
-331	1	20	-815	1	14	-838-2	1	16	-875	1	16
-333	1	20	-854	1	14	-844	1	14			
-334	1	20	-855	1	14	-844-1	1	14	21-101	1	16
08-101	1	28	-856	1	16	-845	1	14	-111	1	16

# 26. Index (索引)

Part No.	Q'ty	Page No.	Part No.	Q'ty	Page No.	Part No.	Q'ty	Page No.	Part No.	Q'ty	Page No.
21-113	1	2	23-372	1	5	31-403	1	6	41-113	1	4
-122	1	2	-383	1	5	-404	1	6	-113	1	4
-131	1	2	-393	1	6	-405	1	6	-113	1	4
-208	1	2	-393	1	23	-406	1	6	-113	1	21
-301	1	2	-393	1	9	-407	1	6	-113	1	25
-317	1	2	-402	1	2	-409	1	6	-113	1	25
-319	1	29	25-101	1	2	-410	1	8	-115	3	4
-329	1	20	-101	1	2	-410	1	22	-115	4	4
-402	1	2	-102	1	2	35-111	1	5	-115	5	4
-405	1	26	-102	1	2	-121	1	6	-115	1	12
-441	1	2	-141	2	31	-199	1	10	-115	4	21
-501	1	2	26-702	1	29	-199	1	24	-115	3	25
-504	1	18	-703	2	29	-201	1	6	-115	4	25
-508	1	28	-706	1	29	-203	2	6	-117	3	4
-513	1	2	-711	1	29	-207	1	6	-117	4	4
-521	1	2	-712	1	18	-246	1	6	-117	5	4
-701	1	2	-712	1	29	-257	1	6	-117	1	12
-711	1	2	-713	1	18	-302	1	6	-117	4	21
-841	1	2	-713	1	29	-303	3	6	-117	3	25
-851	1	2	-751	1	29	-304	1	6	-117	4	25
-852	1	2	-752	2	29	-305	2	6	-121	1	4
-854	1	2	-753	2	29	-322	1	6	-121	1	4
23-121	4	31	-761	1	29	39-102	1	6	-121	1	25
-122	4	31	-764	1	20	-104	4	31	-121	1	25
-161	1	2	-856	1	31	-107	1	8	-123	1	4
-166	1	5	-857	1	31	-107	1	22	-131	3	4
-187	2	29	-858	1	31	-108	1	2	-131	4	4
-189	1	11	-859	1	31	-122	1	5	-131	5	4
-195	1	5	-860	1	31	-133	1	6	-131	1	12
-195	2	8	-861	1	31	-137	1	6	-131	4	21
-195	1	22	-866	1	31	-161	1	2	-131	3	25
-197	1	5	-867	2	31	-162	1	6	-131	4	25
-197	1	8	-868	2	31	-163	2	2	-132	1	4
-197	1	9	-869	2	31	-213	1	2	-132	1	25
-197	1	22	-876	1	31	-233	1	6	-151	1	4
-197	1	23	-877	2	31	-233	1	6	-151	1	21
-197	1	20	-878	1	31				-152	2	4
-200	1	26	-879	1	31	41-101	3	4	-152	2	21
-200	1	26	28-001	1	31	-101	4	4	-153	1	4
-200	1	12	-011	1	31	-101	5	4	-153	1	21
-200	1	72	-021	1	31	-101	4	21	-154	1	4
-206	1	2	-311	1	31	-101	3	25	-154	1	21
-207	1	2	-312	1	31	-101	4	25	-172	3	4
-217	1	2	-313	1	31	-101	1	12	-172	4	4
-223	1	2	-314	1	31	-105	3	4	-172	5	4
-232	1	2	-421	1	31	-105	4	4	-172	1	12
-260	2	2	-422	1	31	-105	5	4	-172	4	21
-260	1	8	-451	1	31	-105	4	21	-172	3	25
-260	1	22	-452	1	31	-105	1	12	-172	4	25
-263	1	2	-464	1	31	-105	3	25	-303	1	4
-291	3	6	-611	1	31	-105	4	25	-303	1	25
-298	1	5				-107	3	4	-416	2	4
-299	1	2	31-161	4	31	-107	4	4	-416	2	25
-300	1	6	-203	1	2	-107	5	4	-701	2	4
-301	1	2	-305	1	6	-107	1	12	-701	3	4
-302	2	2	-306	1	6	-107	4	21	-701	4	4
-306	4	6	-307	1	6	-107	3	25	-701	1	12
-324	4	31	-310	1	6	-107	4	25	-701	2	21
-341	2	8	-314	5	6	-111	6	4	-701	2	25
-341	2	9	-314	2	6	-111	8	4	-701	3	25
-341	2	22	-341	2	6	-111	10	4	-702	2	2
-341	2	23	-341	2	6	-111	2	12	-702	1	4
-341	2	23	-364	1	6	-111	8	21	-702	1	4
-341	1	23	-401	1	6	-111	6	25	-702	1	4
-368	1	6	-402	1	6	-111	8	25	-702	1	25

## 26. Index (索引)

Part No.	Q'ty	Page No.	Part No.	Q'ty	Page No.	Part No.	Q'ty	Page No.	Part No.	Q'ty	Page
41-702	1	25	45-151	1	4	61-713	1	8	67-225	1	10
-721	1	4	-151	1	21	-713	1	22	-251	1	10
-721	1	4	-151	1	25	-714	1	12	-251	1	20
-721	1	21	-151	1	25	-714	1	26	-311	1	20
-721	1	21	-163	1	4	-722	1	8	69-105	1	10
-721	1	21	-225	1	4	-722	1	22	-105	1	20
-721	1	25	-225	1	21	-806	1	12	-106	1	20
42-004	1	30	-225	1	25	-806	1	20	-121	1	8
-005	1	30	-232	1	14	-806	1	26	-121	1	20
-006	1	30	-232	1	16	-823	1	10	-203	1	20
-008	1	30	-232	1	16	-823	1	10	-208	1	8
-112	1	30	-701	1	21	-823	1	12	-241	1	10
-113	1	30	-911	1	12	-823	1	24	-305	1	8
-115		30	-913	1	12	-823	1	24	-305	1	20
-115		30	-913	1	12	-823	1	26	-567	1	20
-116		30	-917	1	4	-826	1	20	-581	1	20
-119		30	-917	1	21	-841	1	18	-601	1	20
-120	1	30	-921	1	4	63-201	1	12	-602	2	20
-122	3	30	-921	1	21	-201	1	26			
-123		30	-922	1	4	-211	1	18	71-191	2	4
43-105	1	21	-922	1	21	-213	1	20	-191	2	20
-112	1	4	-981	1	25	-232	2	9	-191	2	20
-112	1	21	-982	1	25	-232	2	23	-201	1	20
-112	1	25	47-101	1	21	-331	1	8	-216	1	10
-331	1	4	-202	1	4	-331	1	22	-251	2	20
-331	1	21	-202	1	21	-351	1	23	-301	1	20
-331	1	25	-202	1	25	-352	1	9	-306	1	20
-333	1	4	49-133	1	9	-511	1	22	-306	2	20
-333	1	21	-133	1	23	-512	1	8	-306	4	10
-333	1	25				-711	1	12	-322	1	20
-335	1	4	51-013	1	9	-711	1	26	-401	1	20
-335	1	21	-013	1	23	-721	1	8	-431	2	20
-335	1	25	-031	1	9	-721	1	22	-431	1	20
-337	2	4	-031	1	23	-811	1	10	-431	2	20
-337	2	21	-036	1	9	-811	1	18	-432	1	20
-337	2	25	-036	1	23	-812	1	10	-432	2	20
-339	1	4	-102	1	9	-812	1	24	-432	1	20
-339	1	21	-103	1	9	-816	1	12	-454	1	10
-339	1	25	-105	1	9	-816	1	20	-454	1	20
45-101	1	4	-109	1	9	-816	1	26	-482	1	20
-101	1	21	-111	2	9	-818	1	12	-531	1	20
-101	1	25	-113	1	9	-818	1	20	-531	1	20
-101	1	25	-117	1	14	-818	1	26	-542	1	10
-101	1	25	-117	1	16	-821	1	24	-551	1	20
-102	1	4	-120	1	9	65-302	1	12	-561	1	10
-102	1	25	55-041	1	23	-303	1	26	-561	1	20
-103	1	4	-051	1	23	-311	2	22	-612	1	20
-121	1	4	-061	1	12	-311	2	8	-612	1	20
-121	1	21	-061	1	20	-401	1	24	-642	1	20
-121	1	25	-061	1	20	-402	1	12	-647	1	20
-121	1	25	-174	1	23	-402	1	26	-692	1	20
-122	1	4	58-112	1	26	-435	1	10	-692	1	20
-122	1	25				-505	1	20	-701	1	20
-123	1	4	61-201	1	12	-506	1	18	-753	1	20
-131	1	4	-221	1	26	-902	1	24	-753	1	20
-131	1	21	-252	1	20	66-111	1	8	-782	1	20
-131	1	25	-253	1	18	-111	1	22	-854	1	20
-131	1	25	-312	1	9	-506	1	9	-870	1	20
-132	1	25	-312	1	18	-506	1	28	-874	1	20
-132	1	4	-312	1	20	67-132	1	10	-874	1	20
-133	1	4	-312	2	23	-132	1	24	-901	1	20
-142	1	4	-322	1	18	-151	1	28	-901	1	20
-142	1	21	-322	1	20	-172	1	12	-933	1	20
-142	1	25	-322	1	9	-172	1	26	-933	1	20
-142	1	25	-512	1	22	-221	1	24	-936	1	20

## 26. Index (索引)

Part No.	Q'ty	Page No.	Part No.	Q'ty	Page No.	Part No.	Q'ty	Page No.	Part No.	Q'ty	Page No.
73-113	1	8	75-453	1	9	81-113	1	22	84-171	1	21
-113	1	22	-455	1	9	-114	1	5	-171	1	25
75-101	2	8	-455	2	20	-115	1	5	-176	1	23
-112	1	8	-455	1	28	-136	1	5	-177	1	23
-112	1	12	-455	2	18	-137	1	5	-311	1	20
-112	1	26	-455	2	20	-141	2	9	-311	1	20
-112	1	22	-456	1	4	-154	1	5	-312	1	9
-113	2	26	-456	1	4	-164	1	20	-313	1	20
-114	1	23	-456	1	21	-166	1	20	-361	2	2
-114	1	9	-456	1	21	-167	1	20	-361	2	2
-126	1	20	-456	1	25	-168	1	10	-361	1	4
-132	2	23	-456	1	25	-168	1	20	-361	1	4
-132	1	9	-456	1	29	-170	1	20	-361	1	4
-139	1	10	-456	2	29	-183	1	5	-361	1	4
-139	1	24	-458	1	9	-184	1	5	-361	2	4
-154	1	11	-458	1	9	-201	1	5	-361	1	6
-154	1	18	-465	1	20	-213	1	20	-361	1	10
-154	1	26	-465	1	20	-255	1	5	-361	1	10
-161	1	26	-467	3	6	-312	1	9	-361	2	12
-232	1	8	-468	3	6	-312	4	20	-361	1	16
-243	1	9	-469	1	2	-338	1	18	-361	1	20
-243	1	23	-470	1	6	-401	1	10	-361	1	20
-327	1	10	-491	1	12	-401	1	24	-361	1	21
-327	1	24	-529	4	31	-412	1	8	-361	1	21
-328	1	20	77-001	1	31	-412	1	22	-361	2	21
-331	1	10	-002	2	31	-512	1	9	-361	1	21
-331	1	10	-003	1	31	-702	1	5	-361	1	24
-331	1	24	-004	1	31	-711	1	5	-361	1	25
-332	1	8	-005	1	31	-713	1	5	-361	1	25
-332	2	12	-006	1	31	-736	2	5	-361	1	25
-332	1	22	-007	1	31	-751	2	5	-361	2	25
-332	1	22	-009	1	11	-751	4	31	-361	2	26
-332	2	26	-101	1	11	84-111	4	14	-361	1	29
-371	1	10	-103	1	11	-113	1	14	-362	3	2
-371	1	10	-107	1	11	-161	1	4	-362	3	6
-371	2	23	-109	1	11	-161	1	6	-362	4	11
-371	1	24	-111	1	11	-161	1	10	-362	1	18
-371	1	24	-113	1	11	-161	1	16	-362	1	20
-372	2	9	-114	1	11	-161	1	16	-362	1	20
-381	1	4	-116	1	11	-161	2	18	-362	1	28
-381	2	12	-121	1	11	-161	2	20	-363	1	2
-381	1	23	-131	1	11	-161	1	21	-363	3	6
-381	1	25	-133	1	11	-161	1	25	-363	3	9
-381	1	25	-135	1	11	-162	1	4	-363	1	9
-381	1	26	-136	1	11	-162	2	9	-363	2	18
-381	4	28	-143	1	11	-162	2	10	-363	2	29
-384	1	18	79-121	1	11	-162	1	20	-364	1	4
-401	1	10	-142	1	28	-162	1	21	-364	1	14
-401	2	18	-142	1	18	-162	1	25	-364	1	21
-401	1	24	-142	1	18	-162	2	29	-364	1	25
-403	1	12	-146	1	28	-163	1	4	-364	1	16
-446	2	2	-158	1	20	-163	1	14	-365	1	8
-451	4	31	-171	1	20	-163	1	16	-365	1	22
-452	1	10	-174	1	20	-163	1	21	-365	1	22
-452	1	20	-175	1	20	-163	1	25	-366	1	8
-452	1	24	-222	1	11	-164	2	5	-366	1	9
-452	1	28	-236	1	6	-164	4	9	-366	1	9
-453	1	2	-501	1	2	-164	1	10	-366	1	10
-453	1	4	-502	1	2	-164	4	20	-366	1	20
-453	2	10	-601	1	24	-164	2	20	-366	1	23
-453	1	11				-164	1	24	-366	1	23
-453	1	21	80-751	4	31	-168	1	14	-366	1	24
-453	1	23	-101	2	26	-168	1	16	-366	1	28
-453	2	24	81-110	1	5	-171	1	4	-368	1	14
-453	1	26	-113	1	8	-171	1	16	-370	1	20

## 26. Index (索引)

Part No.	Q'ty	Page No.	Part No.	Q'ty	Page No.	Part No.	Q'ty	Page No.	Part No.	Q'ty	Page No.
84-374	1	4	84-566	2	11	84-588	1	23	84-862	1	2
-374	1	4	-566	2	18	-591	1	8	85-112	1	2
-374	2	18	-566	1	18	-591	1	22	-113	12	
-374	1	21	-566	3	22	-591	1	28	-113	2	
-374	1	21	-566	1	25	-612	1	10	-113	6	
-374	1	25	-566	1	26	-612	2	23	-114	2	
-374	1	25	-566	2	29	-612	1	24	-114	2	
-374	2	28	-566	2	26	-612	1	28	-114	2	
-374	2	28	-566	2	29	-614	1	9	-114	2	
-374	1	28	-566	2	29	-616	1	10	-181	2	
-374	1	28	-567	2	8	-616	2	10	-181	2	
-377	1	20	-567	2	12	-616	2	24	-182	1	
-379	2	9	-567	2	26	-661	8	2	-182	1	
-382	1	14	-567	2	22	-661	4	9	-211	1	
-382	1	16	-567	2	26	-661	4	23	-211	1	
-383	1	9	-568	2	8	-661	2	28	-211	1	
-383	1	23	-568	2	12	-664	10	2	-212	2	
-462	1	2	-568	2	22	-711	2	9	-212	2	
-462	1	9	-571	4	2	-711	1	20	-314	1	
-463	1	23	-571	4	2	-711	2	23	-531	1	
-464	2	4	-571	1	2	-712	2	18	-531	1	
-464	2	14	-571	2	2	-712	1	23	-531	1	
-464	1	16	-571	1	4	-715	4	9	-531	1	
-464	2	18	-571	1	4	-715	1	20	-611	1	
-464	2	21	-571	4	6	-715	4	23	-611	1	
-464	2	25	-571	2	9	-716	1	24	-621	2	
-511	2	9	-571	1	4	-718	2	22	-621	1	
-511	1	11	-571	2	12	-718	4	26	-621	1	
-511	2	14	-571	2	18	-718	2	8	-621	1	
-511	2	16	-571	1	18	-718	6	12	-621	1	
-511	1	18	-571	1	21	-761	1	9	-621	2	
-511	2	23	-571	1	21	-761	2	8	-621	2	
-512	1	9	-571	1	21	-761	2	10	-623	1	
-512	2	11	-571	2	23	-761	1	18	-624	1	
-512	2	20	-571	1	25	-761	2	2	-629	1	
-512	1	26	-571	1	25	-761	1	2	-721	1	
-513	1	14	-571	2	25	-761	2	23	-721	1	
-513	1	16	-571	1	29	-761	2	24	-762	1	
-515	1	20	-571	2	29	-761	2	26	-851	1	
-521	1	2	-572	2	2	-762	2	12	86-311	1	
-521	1	4	-572	3	6	-762	2	26	-311	1	
-521	2	6	-572	1	8	-763	2	18	-314	1	
-521	2	10	-572	2	12	-763	1	20	-411	2	
-521	1	11	-572	2	10	-764	1	4	-411	2	
-521	2	12	-572	2	10	-764	1	11	-411	3	
-521	1	18	-572	2	12	-764	1	25	-411	1	
-521	1	18	-572	2	18	-764	2	28	-411	1	
-521	2	20	-572	2	20	-764	3	26	-411	1	
-521	1	20	-572	2	20	-766	1	10	-411	1	
-521	1	21	-572	1	22	-766	1	24	-411	1	
-521	2	24	-572	2	24	-766	2	26	-411	1	
-521	1	25	-572	2	24	-767	1	10	-411	1	
-521	2	26	-572	2	26	-781	1	11	-411	1	
-561	1	11	-572	2	26	-782	1	28	-411	2	
-561	1	11	-574	3	2	-784	1	28	-411	1	
-562	1	11	-574	1	9	-812	1	11	-411	1	
-563	2	22	-574	1	23	-812	1	20	-411	2	
-564	2	26	-575	2	20	-812	1	20	-411	2	
-564	1	28	-576	1	9	-812	1	20	-411	1	
-564	1	28	-576	1	9	-812	2	20	-411	1	
-564	2	28	-576	1	23	-812	2	28	-411	2	
-566	5	2	-576	1	23	-813	2	28	-411	2	
-566	6	2	-576	1	23	-814	1	9	-411	2	
-566	4	6	-581	1	11	-861	2	2	-412	1	
-566	3	8	-586	2	8	-862	2	2	-412	1	
			-586	2	22						



